



UK Office

Everest Biotech Ltd

Cherwell Innovation Centre
77 Heyford Park
Upper Heyford
Oxfordshire
OX25 5HD
UK

Enquiries:

info@everestbiotech.com

Sales:

sales@everestbiotech.com

Tech support:

support@everestbiotech.com

Tel: +44 (0)1869 238326

Fax: +44 (0)1869 238327

US Office

Everest Biotech c/o Abcore

405 Maple Street, Suite A106
Ramona,
CA 92065
USA

Inquiries:

info@everestbiotech.com

Sales:

usasales@everestbiotech.com

Tech support:

support@everestbiotech.com

Tel: 888-320-4628 (toll-free)

Fax: 888-841-9041

www.everestbiotech.com

**Research Use Only. Not for
diagnostic or therapeutic use.**

EB07263 - Goat Anti-Leptin Receptor Antibody

Size: 100µg specific antibody in 200µl



Target Protein

Principal Names: LEPR, leptin receptor, CD295, OBR, OB receptor, LeprB

Official Symbol: LEPR

Accession Number(s): NP_002294.2; NP_001003679.1; NP_001003680.1

Human GeneID(s): [3953](#)

Important Comments: This antibody is expected to recognise all three reported isoforms (NP_002294.2; NP_001003679.1; NP_001003680.1).

Immunogen

Peptide with sequence C-TQDDIEKHQSDAG, from the internal region of the protein sequence according to NP_002294.2; NP_001003679.1; NP_001003680.1.

Please note the [peptide](#) is available for sale.

Purification and Storage

Purified from goat serum by ammonium sulphate precipitation followed by antigen affinity chromatography using the immunizing peptide.

Supplied at 0.5 mg/ml in Tris saline, 0.02% sodium azide, pH7.3 with 0.5% bovine serum albumin.

Aliquot and store at -20°C. Minimize freezing and thawing.

Applications Tested

Peptide ELISA: antibody detection limit dilution 1:128000.

Western blot: Approx 140-150kDa band observed in Human Cerebellum, Mouse Foetal Brain and Rat Brain lysates (calculated MW of 132kDa according to Human NP_002294.2 and 130.8kDa according to Mouse NP_666258.2 and Rat NP_036728.1). This molecular weight is routinely observed by other sources. Recommended concentration: 1-2µg/ml. Primary incubation 1 hour at room temperature.

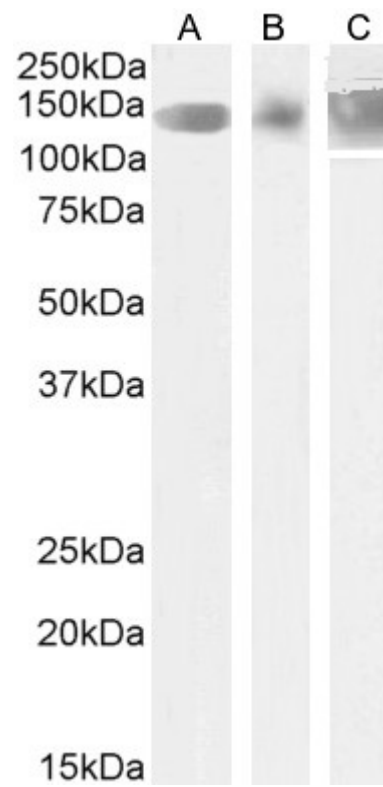
IHC: Paraffin embedded Human Kidney. Recommended concentration: 4-6µg/ml.

Flow Cytometry: Flow cytometric analysis of K562 cells. Recommended concentration: 10ug/ml.

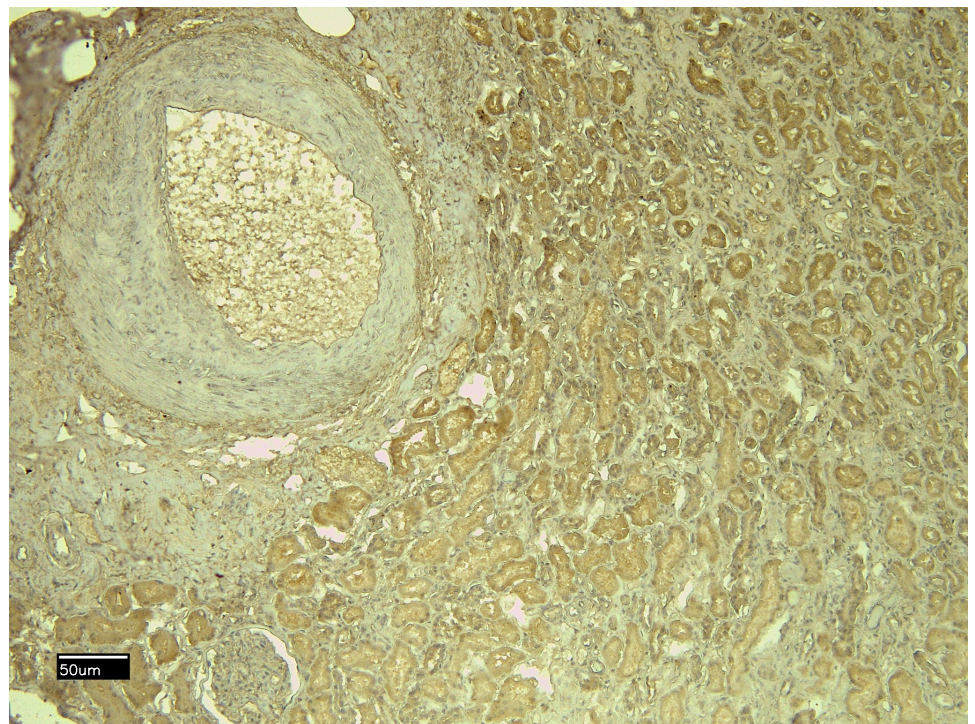
Species Reactivity

Tested: Human, Mouse, Rat

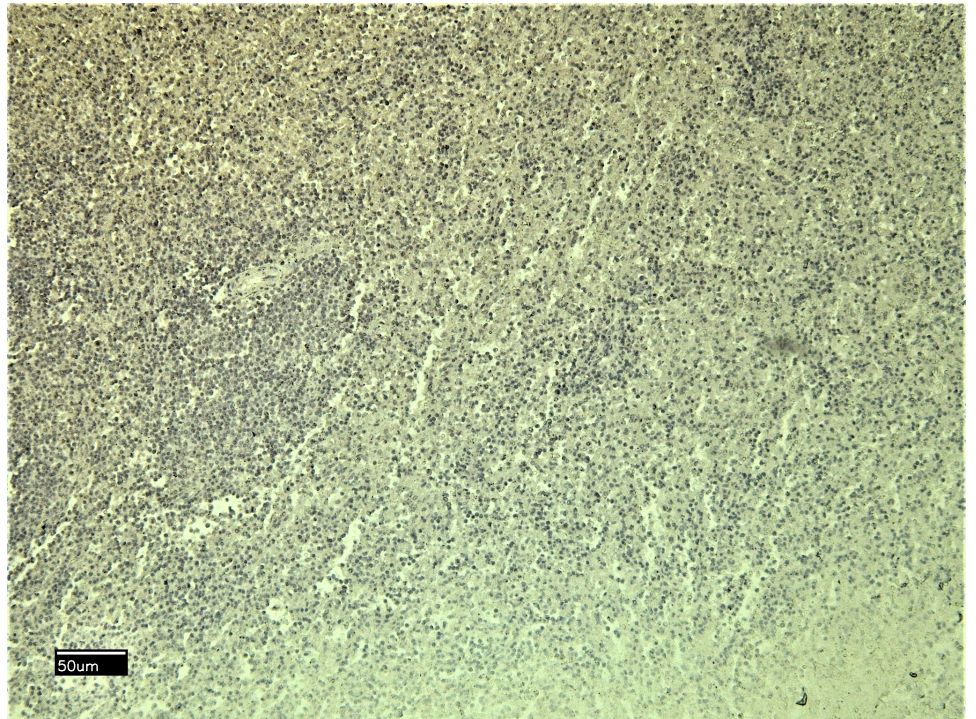
Expected from sequence similarity: Human, Dog



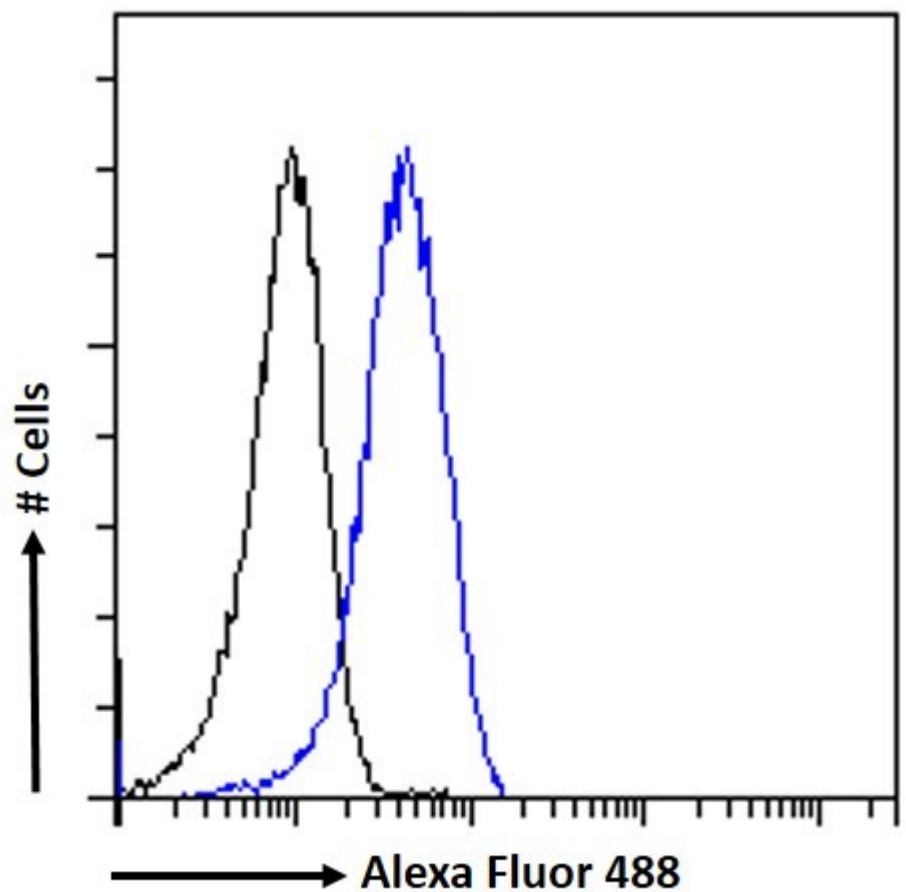
EB07263 (1.75 μ g/ml) staining of Human Cerebellum (A), and (1.5ug/ml) Mouse Foetal Brain (B) and Rat Brain (C) lysate (35 μ g protein in RIPA buffer). Detected by chemiluminescence.



EB07263 (6 μ g/ml) staining of paraffin embedded Human Kidney. Heat induced antigen retrieval with citrate buffer Ph 6, HRP-staining.



EB07263 Negative Control showing staining of paraffin embedded Human Kidney, with no primary antibody.



EB07263 Flow cytometric analysis of paraformaldehyde fixed K562 cells (blue line), permeabilized with 0.5% Triton. Primary incubation 1hr (10ug/ml) followed by Alexa Fluor 488 secondary antibody (1ug/ml). IgG control: Unimmunized goat IgG (black line) followed by Alexa Fluor 488 secondary antibody.