



UK Office

Everest Biotech Ltd

Cherwell Innovation Centre
77 Heyford Park
Upper Heyford
Oxfordshire
OX25 5HD
UK

Enquiries:

info@everestbiotech.com

Sales:

sales@everestbiotech.com

Tech support:

support@everestbiotech.com

Tel: +44 (0)1869 238326

Fax: +44 (0)1869 238327

US Office

Everest Biotech c/o Abcore

405 Maple Street, Suite A106
Ramona,
CA 92065
USA

Inquiries:

info@everestbiotech.com

Sales:

usasales@everestbiotech.com

Tech support:

support@everestbiotech.com

Tel: 888-320-4628 (toll-free)

Fax: 888-841-9041

www.everestbiotech.com

**Research Use Only. Not for
diagnostic or therapeutic use.**

EB11863 - Goat Anti-LIF Antibody

Size: 100µg specific antibody in 200µl



Target Protein

Principal Names: CDF, cholinergic differentiation factor, D factor, DIA, differentiation inhibitory activity, differentiation stimulating factor, differentiation-inducing factor, differentiation-stimulating factor, hepatocyte-stimulating factor III, HILDA, human interleukin in DA cells, leukemia inhibitory factor, leukemia inhibitory factor (cholinergic differentiation factor), LIF, melanoma-derived LPL inhibitor, MLPLI, OTTHUMP00000198698

Official Symbol: LIF

Accession Number(s): NP_002300.1

Human GeneID(s): [3976](#)

Immunogen

Peptide with sequence RLCSKYHVGHDVT, from the internal region of the protein sequence according to NP_002300.1.

Please note the [peptide](#) is available for sale.

Purification and Storage

Purified from goat serum by ammonium sulphate precipitation followed by antigen affinity chromatography using the immunizing peptide.

Supplied at 0.5 mg/ml in Tris saline, 0.02% sodium azide, pH7.3 with 0.5% bovine serum albumin.

Aliquot and store at -20°C. Minimize freezing and thawing.

Applications Tested

Peptide ELISA: antibody detection limit dilution 1:128000.

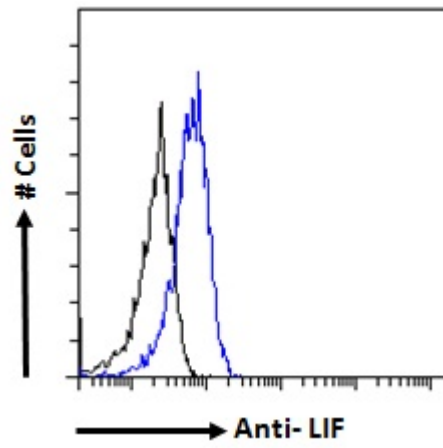
IHC: Paraffin embedded Human Testis. Recommended concentration: 6µg/ml.

Flow Cytometry: Flow cytometric analysis of HepG2 cells. Recommended concentration: 10ug/ml.

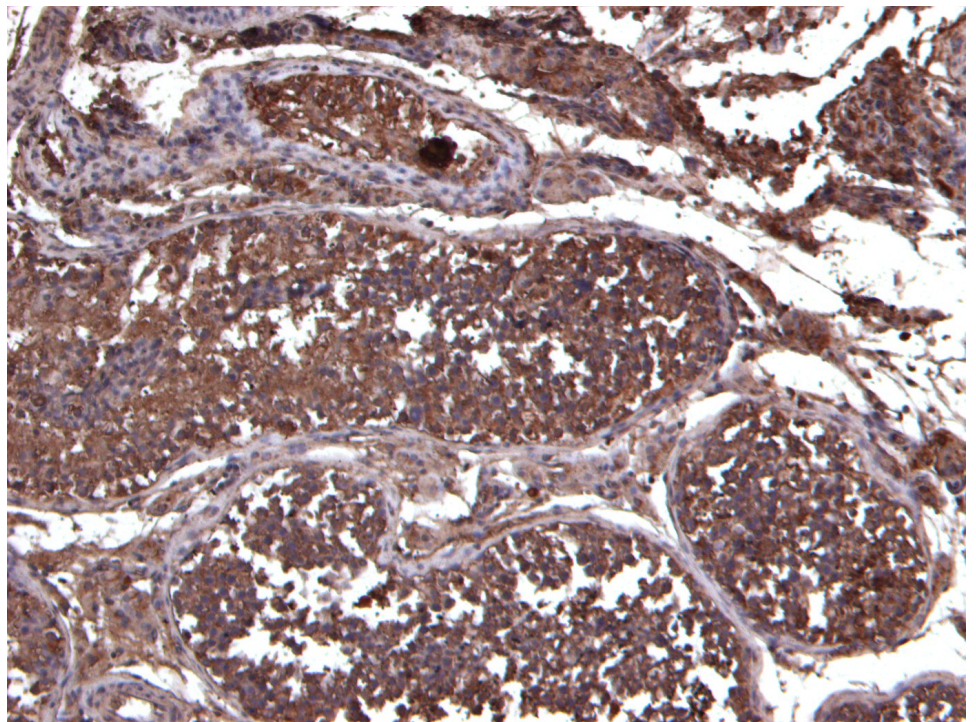
Species Reactivity

Tested: Human

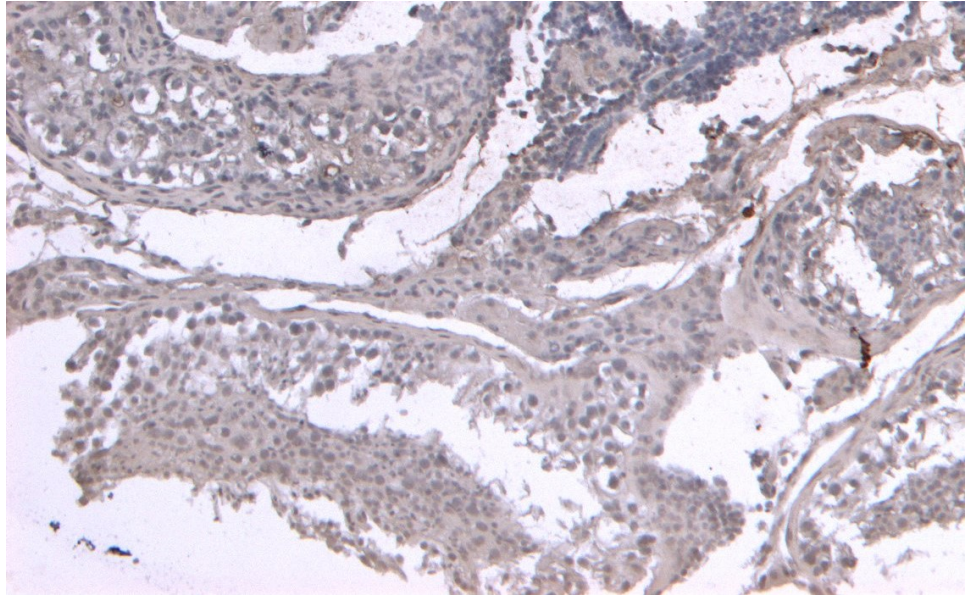
Expected from sequence similarity: Human



EB11863 Flow cytometric analysis of paraformaldehyde fixed HepG2 cells (blue line), permeabilized with 0.5% Triton. Primary incubation 1hr (10ug/ml) followed by Alexa Fluor 488 secondary antibody (1ug/ml). IgG control: Unimmunized goat IgG (black line) followed by Alexa Fluor 488 secondary antibody.



EB11863 (6µg/ml) staining of paraffin embedded Human Testis. Heat induced antigen retrieval with citrate buffer pH 6, HRP-staining.



EB11863 Negative Control showing staining of paraffin embedded Human Testis, with no primary antibody.