

UK Office

Everest Biotech Ltd

Cherwell Innovation Centre
77 Heyford Park
Upper Heyford
Oxfordshire
OX25 5HD
UK

Enquiries:

info@everestbiotech.com

Sales:

sales@everestbiotech.com

Tech support:

support@everestbiotech.com

Tel: +44 (0)1869 238326

www.everestbiotech.com

**Research Use Only. Not for
diagnostic or therapeutic use.**

EB09588 - Goat Anti-LIGHT / CD258 Antibody

Size: 100µg specific antibody in 200µl



Target Protein

Principal Names: TNFSF14, tumor necrosis factor (ligand) superfamily, member 14, CD258, HVEM, LIGHT, LTg, TR2, delta transmembrane LIGHT, herpesvirus entry mediator A, ligand for herpesvirus entry mediator, tumor necrosis factor ligand superfamily, member 14, tumor necrosis factor receptor-like 2, tumor necrosis factor superfamily member LIGHT

Official Symbol: TNFSF14

Accession Number(s): NP_003798.2; NP_742011.1

Human GeneID(s): [8740](#)

Important Comments: This antibody is expected to recognize both reported isoforms (NP_003798.2; NP_742011.1).

Immunogen

Peptide with sequence C-HEVNPA AHLTGANS, from the internal region of the protein sequence according to NP_003798.2; NP_742011.1.

Please note the [peptide](#) is available for sale.

Purification and Storage

Purified from goat serum by ammonium sulphate precipitation followed by antigen affinity chromatography using the immunizing peptide.

Supplied at 0.5 mg/ml in Tris saline, 0.02% sodium azide, pH7.3 with 0.5% bovine serum albumin.

Aliquot and store at -20°C. Minimize freezing and thawing.

Applications Tested

Peptide ELISA: antibody detection limit dilution 1:64000.

Western blot: Approx 20-22kDa band observed in Human Cerebellum and Frontal Cortex Brain lysates (calculated MW of 22.4kDa according to NP_742011.1) Recommended concentration: 0.03-0.1µg/ml. Primary incubation 1 hour at room temperature.

Immunofluorescence: Strong expression of the protein seen in the cytoplasm and membrane of HeLa cells. Recommended concentration: 10µg/ml.

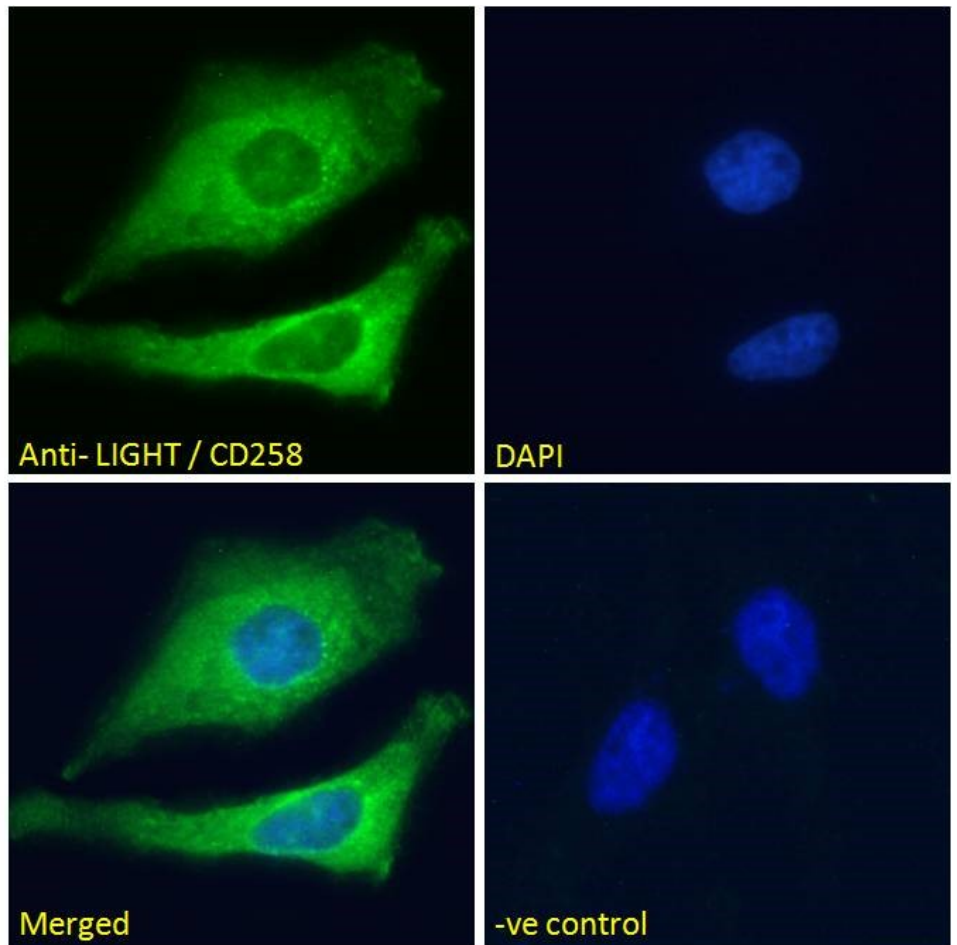
Species Reactivity

Tested: Human

Expected from sequence similarity: Human



EB09588 (0.03 μ g/ml) staining of Human Cerebellum (A) and Frontal Cortex (B) lysate (35 μ g protein in RIPA buffer). Detected by chemiluminescence.



EB09588 Immunofluorescence analysis of paraformaldehyde fixed HeLa cells, permeabilized with 0.15% Triton. Primary incubation 1hr (10 μ g/ml) followed by Alexa Fluor 488 secondary antibody (2 μ g/ml), showing cytoplasmic

and membrane staining. The nuclear stain is DAPI (blue). Negative control: Unimmunized goat IgG (10ug/ml) followed by Alexa Fluor 488 secondary antibody (2ug/ml).