



UK Office

Everest Biotech Ltd

Cherwell Innovation Centre
77 Heyford Park
Upper Heyford
Oxfordshire
OX25 5HD
UK

Enquiries:

info@everestbiotech.com

Sales:

sales@everestbiotech.com

Tech support:

support@everestbiotech.com

Tel: +44 (0)1869 238326

www.everestbiotech.com

**Research Use Only. Not for
diagnostic or therapeutic use.**

EB12996 - Goat Anti-LILRA4 (aa68-78) Antibody

Size: 100µg specific antibody in 200µl



Target Protein

Principal Names: LILRA4, leukocyte immunoglobulin-like receptor, subfamily A (with TM domain), member 4, CD85g, ILT7, CD85 antigen-like family member G, ILT-7, immunoglobulin-like transcript 7, leukocyte immunoglobulin-like receptor subfamily A member 4, leukocyte immunog

Official Symbol: LILRA4

Accession Number(s): NP_036408.3

Human GeneID(s): [23547](#)

Immunogen

Peptide with sequence C-SRHILKTLESE, from the internal region of the protein sequence according to NP_036408.3.

Please note the [peptide](#) is available for sale.

Purification and Storage

Purified from goat serum by ammonium sulphate precipitation followed by antigen affinity chromatography using the immunizing peptide.

Supplied at 0.5 mg/ml in Tris saline, 0.02% sodium azide, pH7.3 with 0.5% bovine serum albumin.

Aliquot and store at -20°C. Minimize freezing and thawing.

Applications Tested

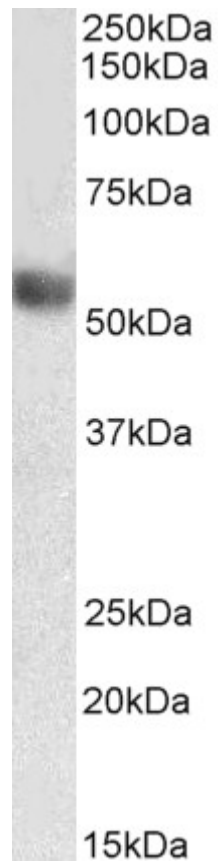
Peptide ELISA: antibody detection limit dilution 1:16000.

Western blot: Approx 55kDa band observed in Human Lymph Node lysates (calculated MW of 55.2kDa according to NP_036408.3). Recommended concentration: 0.1-0.3µg/ml.

Species Reactivity

Tested: Human

Expected from sequence similarity: Human



EB12996 (0.3 μ g/ml) staining of Human Lymph Node lysate (35 μ g protein in RIPA buffer). Primary incubation was 1 hour. Detected by chemiluminescence.