



UK Office

Everest Biotech Ltd

Cherwell Innovation Centre
77 Heyford Park
Upper Heyford
Oxfordshire
OX25 5HD
UK

Enquiries:

info@everestbiotech.com

Sales:

sales@everestbiotech.com

Tech support:

support@everestbiotech.com

Tel: +44 (0)1869 238326

Fax: +44 (0)1869 238327

US Office

Everest Biotech c/o Abcore

405 Maple Street, Suite A106
Ramona,
CA 92065
USA

Inquiries:

info@everestbiotech.com

Sales:

usasales@everestbiotech.com

Tech support:

support@everestbiotech.com

Tel: 888-320-4628 (toll-free)

Fax: 888-841-9041

www.everestbiotech.com

**Research Use Only. Not for
diagnostic or therapeutic use.**

EB12770 - Goat Anti-LIM domain only 3 / Lmo3 Antibody

Size: 100µg specific antibody in 200µl



Target Protein

Principal Names: Lmo3, LIM domain only 3, AI854781, BB106490, Rbtn-3, Rbtn3, LIM domain only protein 3, LIM only 3, LMO-3, neuronal-specific transcription factor DAT1

Official Symbol: Lmo3

Accession Number(s): NP_061110.2; NP_001230540.1; NP_001230541.1;
NP_001230542.1

Human GeneID(s): [55885](#)

Non-Human GeneID(s): 109593 (mouse)

Immunogen

Peptide with sequence C-EGLMKEGYAPQVR, from the C Terminus of the protein sequence according to NP_061110.2; NP_001230540.1; NP_001230541.1; NP_001230542.1.

Please note the [peptide](#) is available for sale.

Purification and Storage

Purified from goat serum by ammonium sulphate precipitation followed by antigen affinity chromatography using the immunizing peptide.

Supplied at 0.5 mg/ml in Tris saline, 0.02% sodium azide, pH7.3 with 0.5% bovine serum albumin.

Aliquot and store at -20°C. Minimize freezing and thawing.

Applications Tested

Peptide ELISA: antibody detection limit dilution 1:128000.

IHC: This antibody has been successfully used in IHC on Mouse, PMID: 32562661.

Immunofluorescence: Strong expression of the protein seen in the cytoplasm and nuclei of HeLa cells. Recommended concentration: 10µg/ml.

Flow Cytometry: Flow cytometric analysis of HeLa cells. Recommended concentration: 10ug/ml.

Species Reactivity

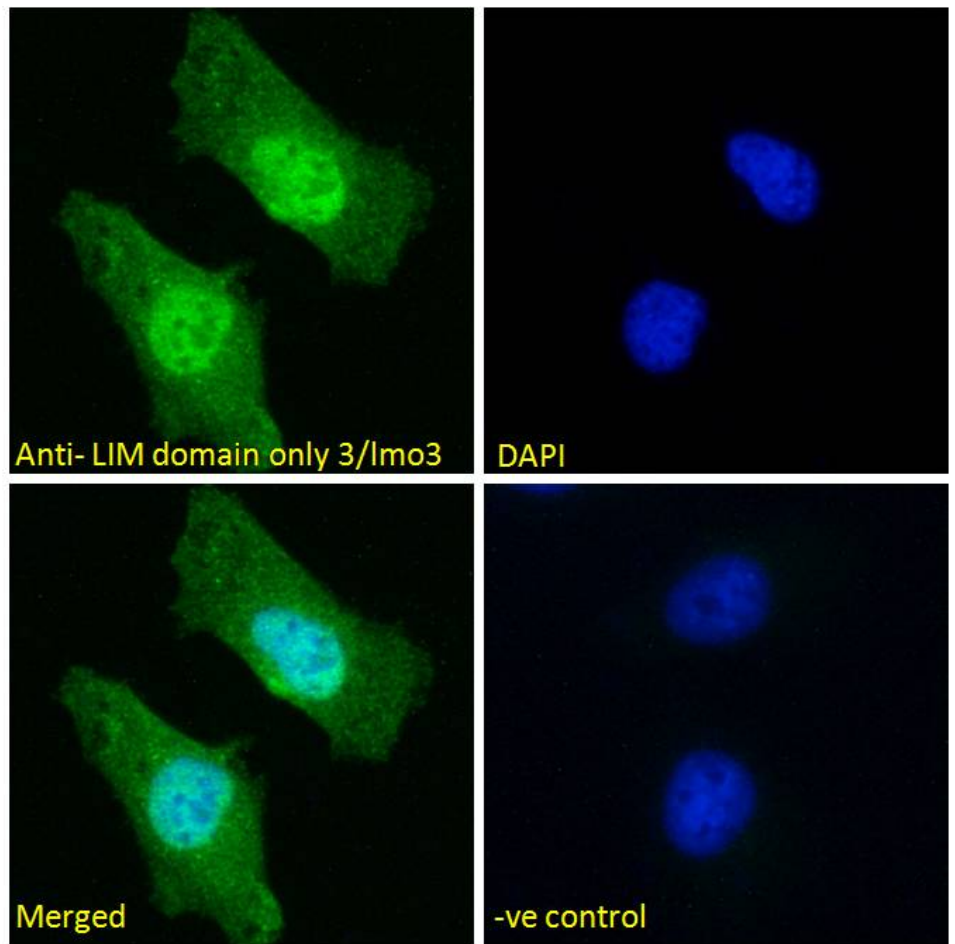
Tested: Human, Mouse

Expected from sequence similarity: Human, Mouse, Dog, Pig

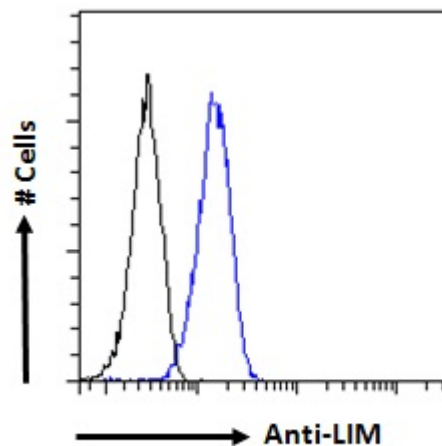
Specific Reference

This antibody has been successfully used in IHC on Mouse:

Sara Brignani, Divya D A Raj, Ewoud R E Schmidt, Özge Düdükcü, Youri Adolfs, Anna A De Ruiter, Mateja Rybiczka-Tesulov, Marieke G Verhagen, Christiaan van der Meer, Mark H Broekhoven, Juan A Moreno-Bravo, Laurens M Grossouw, Emilie Dumontier, Jean-François Cloutier, Alain Chédotal, R Jeroen Pasterkamp
Remotely Produced and Axon-Derived Netrin-1 Instructs GABAergic Neuron Migration and Dopaminergic Substantia Nigra Development.
Neuron. 2020 Aug 19;107(4):684-702.
PMID: 32562661



EB12770 Immunofluorescence analysis of paraformaldehyde fixed HeLa cells, permeabilized with 0.15% Triton. Primary incubation 1hr (10ug/ml) followed by Alexa Fluor 488 secondary antibody (2ug/ml), showing nuclear and cytoplasmic staining. The nuclear stain is DAPI (blue). Negative control: Unimmunized goat IgG (10ug/ml) followed by Alexa Fluor 488 secondary antibody (2ug/ml).



EB12770 Flow cytometric analysis of paraformaldehyde fixed HeLa cells (blue line), permeabilized with 0.5% Triton. Primary incubation 1hr (10ug/ml) followed by Alexa Fluor 488 secondary antibody (1ug/ml). IgG control: Unimmunized goat IgG (black line) followed by Alexa Fluor 488 secondary antibody.