



Everest Biotech Ltd
Cherwell Innovation Centre
77 Heyford Park
Upper Heyford
Oxfordshire
OX25 5HD, United Kingdom

everestbiotech.com

sales@everestbiotech.com

support@everestbiotech.com

Tel +44 1869 238326

Fax +44 1869 238327

Research Use Only. Not for diagnostic or therapeutic use.

Storage: For long-term storage keep aliquots at -20°C. (Store no longer than 12 months at 4°C). Minimize freezing and thawing.

EB06389 - Goat Anti-Lime1 (mouse) Antibody

Size: 100µg specific antibody in 200µl



Target Protein

Principal Names: OTTMUSP00000018005, RP23-60M5.4, RIKEN cDNA 2810038K19 gene, LIME, 2810038K19Rik, Lck interacting transmembrane adaptor 1, Lime1

Official Symbol: Lime1

Accession Number(s): NP_076173.1

Non-Human GeneID(s): 72699 (mouse), 362289 (rat)

Immunogen

Peptide with sequence C-ENVYESIKEMGL, from the C Terminus of the protein sequence according to NP_076173.1.

Please note the [peptide](#) is available for sale.

Purification and Storage

Purified from goat serum by ammonium sulphate precipitation followed by antigen affinity chromatography using the immunizing peptide.

Supplied at 0.5 mg/ml in Tris saline, 0.02% sodium azide, pH7.3 with 0.5% bovine serum albumin.

Aliquot and store at -20°C. Minimize freezing and thawing.

Applications Tested

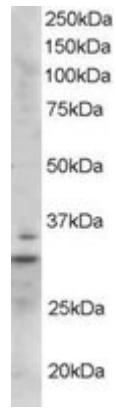
Peptide ELISA: antibody detection limit dilution 1:128000.

Western blot: Approx 32kDa band observed in Mouse Heart lysates (predicted MW of 31kDa according to NP_076173.1). Recommended for use at 0.5-2µg/ml.

Species Reactivity

Tested: Mouse

Expected from sequence similarity: Mouse, Rat



EB06389 staining (1 μ g/ml) of Mouse Heart lysate (RIPA buffer, 35 μ g total protein per lane). Primary incubated for 1 hour. Detected by western blot using chemiluminescence.