

UK Office

Everest Biotech Ltd

Cherwell Innovation Centre
77 Heyford Park
Upper Heyford
Oxfordshire
OX25 5HD
UK

Enquiries:

info@everestbiotech.com

Sales:

sales@everestbiotech.com

Tech support:

support@everestbiotech.com

Tel: +44 (0)1869 238326

www.everestbiotech.com

**Research Use Only. Not for
diagnostic or therapeutic use.**

EB10398 - Goat Anti-LIMS2 Antibody

Size: 100µg specific antibody in 200µl



Target Protein

Principal Names: FLJ10044, ILK-binding protein, LIM and senescent cell antigen-like domains 2, OTTHUMP00000203848, OTTHUMP00000203850, OTTHUMP00000203866, PINCH2, LIMS2

Official Symbol: LIMS2

Accession Number(s): NP_001129509.2; NP_001154875.1

Human GeneID(s): [55679](#)

Important Comments: This antibody is expected to recognize isoform 1 (NP_001129509.2) and isoformn 3 (NP_001154875.1).

Immunogen

Peptide with sequence C-RWSNMSDALA, from the internal region of the protein sequence according to NP_001129509.2; NP_001154875.1.

Please note the [peptide](#) is available for sale.

Purification and Storage

Purified from goat serum by ammonium sulphate precipitation followed by antigen affinity chromatography using the immunizing peptide.

Supplied at 0.5 mg/ml in Tris saline, 0.02% sodium azide, pH7.3 with 0.5% bovine serum albumin.

Aliquot and store at -20°C. Minimize freezing and thawing.

Applications Tested

Peptide ELISA: antibody detection limit dilution 1:8000.

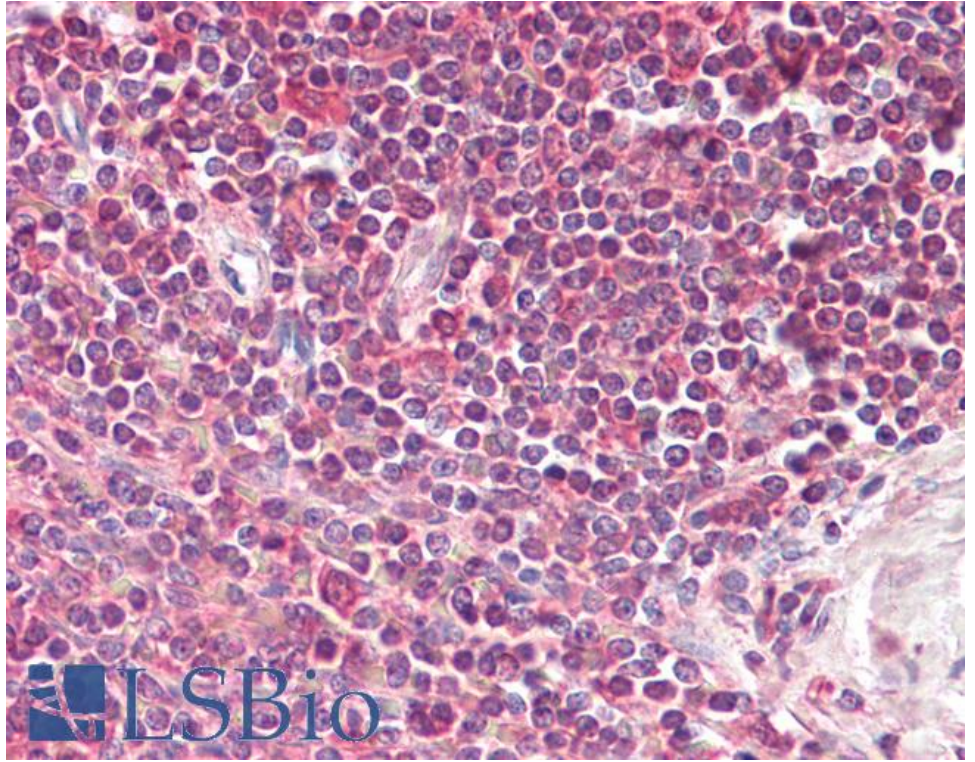
Western blot: Preliminary experiments gave an approx 80kDa band in Human Heart and Mouse Heart lysates after 0.5 µg/ml antibody staining. Please note that currently we cannot find an explanation in the literature for the band we observe given the calculated size of 41.2kDa according to NP_001129509.2. The 80kDa band was successfully blocked by incubation with the immunizing peptide.

IHC: Paraffin embedded Human Spleen. Recommended concentration: 3.75µg/ml.

Species Reactivity

Tested: Human

Expected from sequence similarity: Human



EB10398 (3.75µg/ml) staining of paraffin embedded Human Spleen. Steamed antigen retrieval with citrate buffer pH 6, AP-staining.