



UK Office

Everest Biotech Ltd

Cherwell Innovation Centre
77 Heyford Park
Upper Heyford
Oxfordshire
OX25 5HD
UK

Enquiries:

info@everestbiotech.com

Sales:

sales@everestbiotech.com

Tech support:

support@everestbiotech.com

Tel: +44 (0)1869 238326

Fax: +44 (0)1869 238327

US Office

Everest Biotech c/o Abcore

405 Maple Street, Suite A106
Ramona,
CA 92065
USA

Inquiries:

info@everestbiotech.com

Sales:

usasales@everestbiotech.com

Tech support:

support@everestbiotech.com

Tel: 888-320-4628 (toll-free)

Fax: 888-841-9041

www.everestbiotech.com

**Research Use Only. Not for
diagnostic or therapeutic use.**

EB06205 - Goat Anti-LIN7B / MALS-2 Antibody

Size: 100µg specific antibody in 200µl



Target Protein

Principal Names: LIN7B, VELI2, LIN-7B, MALS-2, lin-7 homolog B (C. elegans), likely ortholog of mouse lin 7 homolog b (C. elegans), Lin-7b protein likely ortholog of mouse LIN-7B mammalian LIN-7 protein 2, MALS2, lin-7 homolog B

Official Symbol: LIN7B

Accession Number(s): NP_071448.1

Human GeneID(s): [64130](#)

Non-Human GeneID(s): 22342 (mouse), 60377 (rat)

Immunogen

Peptide with sequence AALVEPLGLERDVS-C, from the N Terminus of the protein sequence according to NP_071448.1.

Please note the [peptide](#) is available for sale.

Purification and Storage

Purified from goat serum by ammonium sulphate precipitation followed by antigen affinity chromatography using the immunizing peptide.

Supplied at 0.5 mg/ml in Tris saline, 0.02% sodium azide, pH7.3 with 0.5% bovine serum albumin.

Aliquot and store at -20°C. Minimize freezing and thawing.

Applications Tested

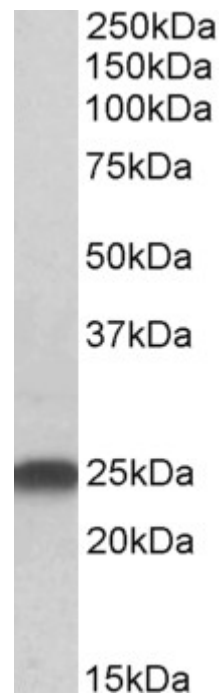
Peptide ELISA: antibody detection limit dilution 1:32000.

Western blot: Approx 25kDa band observed in Mouse and Rat Brain lysates (calculated MW of 22.9kDa according to Mouse NP_035828.1, Rat NP_068526.1 and Human NP_071448.1). Recommended concentration: 0.5-2µg/ml.

Species Reactivity

Tested: Mouse, Rat

Expected from sequence similarity: Human, Mouse, Rat, Dog, Pig, Cow



EB06205 (0.5µg/ml) staining of Rat Brain lysate (35µg protein in RIPA buffer). Primary incubation was 1 hour.
Detected by chemiluminescence.