



## UK Office

### Everest Biotech Ltd

Cherwell Innovation Centre  
77 Heyford Park  
Upper Heyford  
Oxfordshire  
OX25 5HD  
UK

Enquiries:

[info@everestbiotech.com](mailto:info@everestbiotech.com)

Sales:

[sales@everestbiotech.com](mailto:sales@everestbiotech.com)

Tech support:

[support@everestbiotech.com](mailto:support@everestbiotech.com)

Tel: +44 (0)1869 238326

[www.everestbiotech.com](http://www.everestbiotech.com)

**Research Use Only. Not for  
diagnostic or therapeutic use.**

## EB08834 - Goat Anti-LIP1 / LKB1IP Antibody

Size: 100µg specific antibody in 200µl



### Target Protein

**Principal Names:** STK11IP, serine/threonine kinase 11 interacting protein, KIAA1898, LIP1, LKB1IP, STK11IP1, LKB1 interacting protein, STK11 interacting protein

**Official Symbol:** STK11IP

**Accession Number(s):** NP\_443134.2

**Human GeneID(s):** [114790](#)

### Immunogen

Peptide with sequence C-SRGTPNRERKQGEQS, from the internal region of the protein sequence according to NP\_443134.2.

Please note the [peptide](#) is available for sale.

### Purification and Storage

Purified from goat serum by ammonium sulphate precipitation followed by antigen affinity chromatography using the immunizing peptide.

Supplied at 0.5 mg/ml in Tris saline, 0.02% sodium azide, pH7.3 with 0.5% bovine serum albumin.

Aliquot and store at -20°C. Minimize freezing and thawing.

### Applications Tested

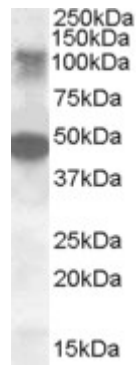
**Peptide ELISA:** antibody detection limit dilution 1:64000.

**Western blot:** Approx. 110 kDa band observed in Human Ovary lysates (calculated MW of 121 kDa according to NP\_443134.2). Recommended concentration: 0.3-1µg/ml. An additional strong band of unknown identity was also consistently observed at 48 kDa. This band was successfully blocked by incubation with the immunising peptide. We would appreciate any feedback from people in the field - have any such results been reported with other antibodies/lysates? Have any further splice variants/modified forms been reported?

### Species Reactivity

**Tested:** Human

**Expected from sequence similarity:** Human



EB08834 (0.5 $\mu$ g/ml) staining of Human Ovary lysate (35 $\mu$ g protein in RIPA buffer). Primary incubation was 1 hour. Detected by chemiluminescence.