



Everest Biotech Ltd  
Cherwell Innovation Centre  
77 Heyford Park  
Upper Heyford  
Oxfordshire  
OX25 5HD, United Kingdom

[everestbiotech.com](http://everestbiotech.com)

[sales@everestbiotech.com](mailto:sales@everestbiotech.com)

[support@everestbiotech.com](mailto:support@everestbiotech.com)

Tel +44 1869 238326

Fax +44 1869 238327

**Research Use Only. Not for diagnostic or therapeutic use.**

Storage: For long-term storage keep aliquots at -20°C. (Store no longer than 12 months at 4°C). Minimize freezing and thawing.

## EB05439 - Goat Anti-LIS1 / PAFAH1B1 Antibody

Size: 100µg specific antibody in 200µl



### Target Protein

**Principal Names:** MDS, LIS2, platelet-activating factor acetylhydrolase, isoform Ib, subunit 1 (45kDa), platelet-activating factor acetylhydrolase, isoform Ib, alpha subunit (45kD), Platelet-activating factor acetylhydrolase, isoform 1B, alpha subunit, lissencephaly 1 protein, PAFAH, MDCR, platelet-activating factor acetylhydrolase, isoform Ib, alpha subunit 45kDa, LIS1, PAFAH1B1

**Official Symbol:** PAFAH1B1

**Accession Number(s):** NP\_000421.1

**Human GeneID(s):** [5048](#)

### Immunogen

Peptide with sequence TGSVDQTVKWEER, from the C Terminus of the protein sequence according to NP\_000421.1.

Please note the [peptide](#) is available for sale.

### Purification and Storage

Purified from goat serum by ammonium sulphate precipitation followed by antigen affinity chromatography using the immunizing peptide.

Supplied at 0.5 mg/ml in Tris saline, 0.02% sodium azide, pH7.3 with 0.5% bovine serum albumin.

Aliquot and store at -20°C. Minimize freezing and thawing.

### Applications Tested

**Peptide ELISA:** antibody detection limit dilution 1:32000.

**Western blot:** Western Blot: Approx 40kDa band observed in Human Lung and Ovary and in Rat Ovary lysates (calculated MW of 46.6kDa according to Human NP\_000421.1 and to Rat NP\_113951.1). Recommended concentration: 0.1-0.3µg/ml.

### Species Reactivity

**Tested:** Human, Rat

**Expected from sequence similarity:** Human, Mouse, Rat, Dog, Pig, Cow

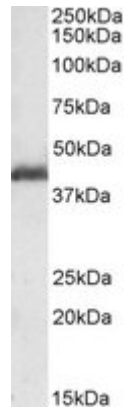
### Specific Reference

The goat polyclonal antibody used in this paper was manufactured by us:

Yingling J, Youn YH, Darling D, Toyo-Oka K, Pramparo T, Hirotsune S, Wynshaw-Boris A. Neuroepithelial stem cell proliferation requires LIS1 for precise spindle orientation and symmetric division.

Cell. 2008 Feb 8;132(3):474-86.

**PMID:** 18267077



EB05439 (0.1 µg/ml) staining of Rat Ovary lysate (35 µg protein in RIPA buffer). Primary incubation was 1 hour.  
Detected by chemiluminescence.