



## UK Office

### Everest Biotech Ltd

Cherwell Innovation Centre  
77 Heyford Park  
Upper Heyford  
Oxfordshire  
OX25 5HD  
UK

Enquiries:

[info@everestbiotech.com](mailto:info@everestbiotech.com)

Sales:

[sales@everestbiotech.com](mailto:sales@everestbiotech.com)

Tech support:

[support@everestbiotech.com](mailto:support@everestbiotech.com)

Tel: +44 (0)1869 238326

Fax: +44 (0)1869 238327

## US Office

### Everest Biotech c/o Abcore

405 Maple Street, Suite A106  
Ramona,  
CA 92065  
USA

Inquiries:

[info@everestbiotech.com](mailto:info@everestbiotech.com)

Sales:

[usasales@everestbiotech.com](mailto:usasales@everestbiotech.com)

Tech support:

[support@everestbiotech.com](mailto:support@everestbiotech.com)

Tel: 888-320-4628 (toll-free)

Fax: 888-841-9041

[www.everestbiotech.com](http://www.everestbiotech.com)

**Research Use Only. Not for  
diagnostic or therapeutic use.**

## EB05088-T - Goat Anti-LIVIN / BIRC7 Antibody - Trial

Size: 20µg specific antibody in 40µl



### Target Protein

**Principal Names:** BIRC7, LIVIN, baculoviral IAP repeat-containing 7 (livin), KIAP, MLIAP, mliap, ML-IAP, livin inhibitor-of-apoptosis, kidney inhibitor of apoptosis protein, melanoma inhibitor of apoptosis protein, baculoviral IAP repeat-containing protein 7, RNF50, livin inhibitor of apoptosis

**Official Symbol:** BIRC7

**Accession Number(s):** NP\_647478.1; NP\_071444.1

**Human GeneID(s):** [79444](#)

**Important Comments:** This antibody is expected to recognise both reported isoforms (as represented by NP\_647478.1 and NP\_071444.1)

### Immunogen

Peptide with sequence C-RAPVRSRVRT, from the C Terminus of the protein sequence according to NP\_647478.1; NP\_071444.1.

Please note the [peptide](#) is available for sale.

### Purification and Storage

Purified from goat serum by ammonium sulphate precipitation followed by antigen affinity chromatography using the immunizing peptide.

Supplied at 0.5 mg/ml in Tris saline, 0.02% sodium azide, pH7.3 with 0.5% bovine serum albumin.

Aliquot and store at -20°C. Minimize freezing and thawing.

### Applications Tested

**Peptide ELISA:** antibody detection limit dilution 1:4000.

**Western blot:** Approx 30kDa and 35kDa in lysates of cell line MOLT4, and 30kDa in lysates of Daudi, Jurkat and K562. These bands correspond to the reported isoforms with calculated MW of 32.8kDa according to NP\_647478.1 and 30.9kDa according to NP\_071444.1. Recommended concentration: 0.3 - 1 µg/ml.

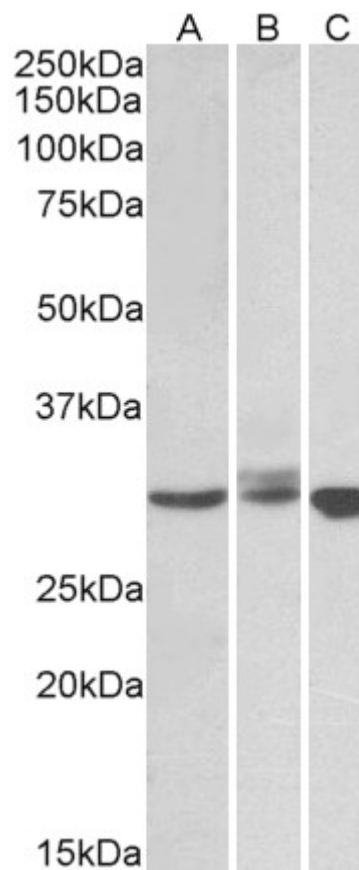
### Species Reactivity

**Tested:** Human

**Expected from sequence similarity:** Human



EB05088 staining (0.3 $\mu$ g/ml) of MOLT4 lysate (35 $\mu$ g protein in RIPA buffer). Primary incubation was 1 hour.  
Detected by chemiluminescence.



EB05088 staining (0.5 $\mu$ g/ml) of Daudi (A), Jurkat (B) and K562 (C) lysates (35 $\mu$ g protein in RIPA buffer). Primary incubation was 1 hour. Detected by chemiluminescence.