



UK Office

Everest Biotech Ltd

Cherwell Innovation Centre
77 Heyford Park
Upper Heyford
Oxfordshire
OX25 5HD
UK

Enquiries:

info@everestbiotech.com

Sales:

sales@everestbiotech.com

Tech support:

support@everestbiotech.com

Tel: +44 (0)1869 238326

Fax: +44 (0)1869 238327

US Office

Everest Biotech c/o Abcore

405 Maple Street, Suite A106
Ramona,
CA 92065
USA

Inquiries:

info@everestbiotech.com

Sales:

usasales@everestbiotech.com

Tech support:

support@everestbiotech.com

Tel: 888-320-4628 (toll-free)

Fax: 888-841-9041

www.everestbiotech.com

**Research Use Only. Not for
diagnostic or therapeutic use.**

EB06212 - Goat Anti-LMO7 / FBXO20 Antibody

Size: 100µg specific antibody in 200µl



Target Protein

Principal Names: LMO7, FBXO20, LOMP, FBX20, KIAA0858, LIM domain only 7, LOMP protein, F-box protein Fbx20, F-box only protein 20, zinc-finger domain-containing protein, RP11-332E3.2

Official Symbol: LMO7

Accession Number(s): AAD33924.1

Human GeneID(s): [4008](#)

Important Comments: Please note that the amino acid sequence of the immunizing peptide differs one amino acid from the current NCBI accession numbers (NP_005349.3, NP_056667.2). This antibody is expected to recognise both reported isoforms (NP_005349.3; NP_056667.2).

Immunogen

Peptide with sequence ESTCVSASLPRS, from the internal region of the protein sequence according to AAD33924.1.

Please note the [peptide](#) is available for sale.

Purification and Storage

Purified from goat serum by ammonium sulphate precipitation followed by antigen affinity chromatography using the immunizing peptide.

Supplied at 0.5 mg/ml in Tris saline, 0.02% sodium azide, pH7.3 with 0.5% bovine serum albumin.

Aliquot and store at -20°C. Minimize freezing and thawing.

Applications Tested

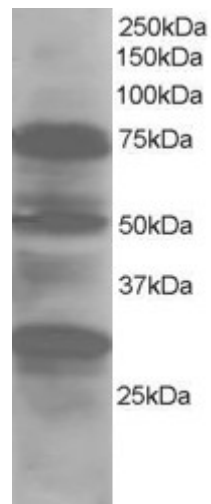
Peptide ELISA: antibody detection limit dilution 1:32000.

Western blot: Approx 70-75kDa band and approx 30kDa band observed in Human Lung lysates (predicted MWs of 92kDa according to AAD33924.1 - however our result agrees with Putilina et al as below). A minor band of unknown identity was also consistently observed at approx 50kDa. Recommended for use at 0.5-2µg/ml.

Species Reactivity

Tested: Human

Expected from sequence similarity: Human, Mouse, Rat, Dog



EB06212 staining (1 μ g/ml) of Human Lung lysate (RIPA buffer, 30 μ g total protein per lane). Primary incubated for 1 hour. Detected by western blot using chemiluminescence.