



Everest Biotech Ltd
Cherwell Innovation Centre
77 Heyford Park
Upper Heyford
Oxfordshire
OX25 5HD, United Kingdom

everestbiotech.com

sales@everestbiotech.com

support@everestbiotech.com

Tel +44 1869 238326

Fax +44 1869 238327

**Research Use Only. Not for
diagnostic or therapeutic use.**

Storage: For long-term storage
keep aliquots at -20°C. (Store no
longer than 12 months at 4°C).
Minimize freezing and thawing.

EB06454 - Goat Anti-LNK / SH2B3 Antibody

Size: 100µg specific antibody in 200µl



Target Protein

Principal Names: lymphocyte adaptor protein, SH2B adaptor protein 3, LNK, SH2B3

Official Symbol: SH2B3

Accession Number(s): NP_005466.1

Human GeneID(s): [10019](#)

Immunogen

Peptide with sequence NGPALQPSSPC, from the N Terminus of the protein sequence according to NP_005466.1.

Please note the [peptide](#) is available for sale.

Purification and Storage

Purified from goat serum by ammonium sulphate precipitation followed by antigen affinity chromatography using the immunizing peptide.

Supplied at 0.5 mg/ml in Tris saline, 0.02% sodium azide, pH7.3 with 0.5% bovine serum albumin.

Aliquot and store at -20°C. Minimize freezing and thawing.

Applications Tested

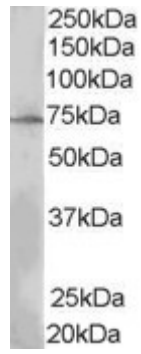
Peptide ELISA: antibody detection limit dilution 1:64000.

Western blot: Approx 70kDa band observed in lysates of cell line MOLT4 (calculated MW of 63.2kDa according to NP_005466.1). In transfected HEK293 transiently expressing SH2B3 a band of approx. 65kDa is observed. This band is not observed in the non-transfected HEK293. Recommended concentration: 0.3-1.0 µg/ml.

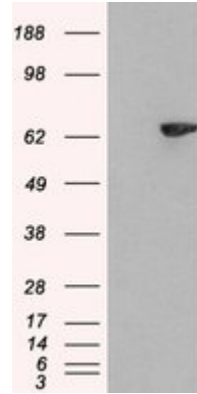
Species Reactivity

Tested: Human

Expected from sequence similarity: Human



EB06454 (0.3 μ g/ml) staining of MOLT4 lysate (35 μ g protein in RIPA buffer). Primary incubation was 1 hour. Detected by chemiluminescence.



HEK293 overexpressing SH2B3 (RC218359) and probed with EB06454 (mock transfection in first lane), tested by Origene.