



Everest Biotech Ltd
Cherwell Innovation Centre
77 Heyford Park
Upper Heyford
Oxfordshire
OX25 5HD, United Kingdom

everestbiotech.com

sales@everestbiotech.com

support@everestbiotech.com

Tel +44 1869 238326

Fax +44 1869 238327

Research Use Only. Not for diagnostic or therapeutic use.

Storage: For long-term storage keep aliquots at -20°C. (Store no longer than 12 months at 4°C). Minimize freezing and thawing.

EB06771 - Goat Anti-LRP5 Antibody

Size: 100µg specific antibody in 200µl



Target Protein

Principal Names: exudative vitreoretinopathy 1, EVR4, EVR1, osteoporosis pseudoglioma syndrome, low density lipoprotein receptor-related protein 7, VBCH2, OPS, OPPG, LRP7, LR3, HBM, BMND1, HGNC:6697, low density lipoprotein receptor-related protein 5, LRP5

Official Symbol: LRP5

Accession Number(s): NP_002326.2

Human GeneID(s): [4041](#)

Immunogen

Peptide with sequence C-ERVEKTTGDKRT, from the internal region of the protein sequence according to NP_002326.2.

Please note the [peptide](#) is available for sale.

Purification and Storage

Purified from goat serum by ammonium sulphate precipitation followed by antigen affinity chromatography using the immunizing peptide.

Supplied at 0.5 mg/ml in Tris saline, 0.02% sodium azide, pH7.3 with 0.5% bovine serum albumin.

Aliquot and store at -20°C. Minimize freezing and thawing.

Applications Tested

Peptide ELISA: antibody detection limit dilution 1:128000.

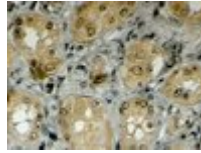
Western blot: Not suitable for WB.

IHC: In paraffin embedded Human Kidney shows primarily nuclear envelope staining in PCT-. Recommended concentration, 3-6µg/ml.

Species Reactivity

Tested: Human

Expected from sequence similarity: Human, Mouse, Rat



EB06771 (4 μ g/ml) staining of paraffin embedded Human Kidney. Steamed antigen retrieval with citrate buffer pH 6, HRP-staining.