



UK Office

Everest Biotech Ltd

Cherwell Innovation Centre
77 Heyford Park
Upper Heyford
Oxfordshire
OX25 5HD
UK

Enquiries:

info@everestbiotech.com

Sales:

sales@everestbiotech.com

Tech support:

support@everestbiotech.com

Tel: +44 (0)1869 238326

Fax: +44 (0)1869 238327

US Office

Everest Biotech c/o Abcore

405 Maple Street, Suite A106
Ramona,
CA 92065
USA

Inquiries:

info@everestbiotech.com

Sales:

usasales@everestbiotech.com

Tech support:

support@everestbiotech.com

Tel: 888-320-4628 (toll-free)

Fax: 888-841-9041

www.everestbiotech.com

**Research Use Only. Not for
diagnostic or therapeutic use.**

EB11571 - Goat Anti-LSM2 (aa33-46) Antibody

Size: 100µg specific antibody in 200µl



Target Protein

Principal Names: C6orf28, G7b, LSM2, LSM2 homolog, U6 small nuclear RNA associated (S. cerevisiae), OTTHUMP00000029159, protein G7b, small nuclear ribonuclear protein D homolog, snRNP, snRNP core Sm-like protein Sm-x5, U6 snRNA-associated Sm-like protein LSm2, YBL026W

Official Symbol: LSM2

Accession Number(s): NP_067000.1

Human GeneID(s): [57819](#)

Non-Human GeneID(s): 27756 (mouse), 684148 (rat)

Immunogen

Peptide with sequence C-DQYLNKLTDISVT, from the internal region of the protein sequence according to NP_067000.1.

Please note the [peptide](#) is available for sale.

Purification and Storage

Purified from goat serum by ammonium sulphate precipitation followed by antigen affinity chromatography using the immunizing peptide.

Supplied at 0.5 mg/ml in Tris saline, 0.02% sodium azide, pH7.3 with 0.5% bovine serum albumin.

Aliquot and store at -20°C. Minimize freezing and thawing.

Applications Tested

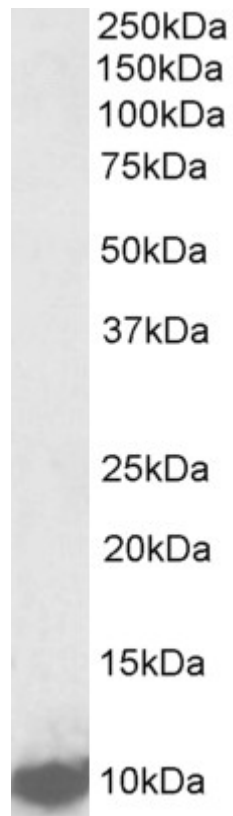
Peptide ELISA: antibody detection limit dilution 1:2000.

Western blot: Approx 10kDa band observed in lysates of cell line K562 and NIH3T3 (calculated MW of 10kDa according to NP_067000.1). Recommended concentration: 1-3µg/ml.

Species Reactivity

Tested: Human, Mouse

Expected from sequence similarity: Human, Mouse, Rat, Dog, Pig, Cow



EB11571 (1 μ g/ml) staining of K562 lysate (35 μ g protein in RIPA buffer). Primary incubation was 1 hour. Detected by chemiluminescence.