



UK Office

Everest Biotech Ltd

Cherwell Innovation Centre
77 Heyford Park
Upper Heyford
Oxfordshire
OX25 5HD
UK

Enquiries:

info@everestbiotech.com

Sales:

sales@everestbiotech.com

Tech support:

support@everestbiotech.com

Tel: +44 (0)1869 238326

Fax: +44 (0)1869 238327

US Office

Everest Biotech c/o Abcore

405 Maple Street, Suite A106
Ramona,
CA 92065
USA

Inquiries:

info@everestbiotech.com

Sales:

usasales@everestbiotech.com

Tech support:

support@everestbiotech.com

Tel: 888-320-4628 (toll-free)

Fax: 888-841-9041

www.everestbiotech.com

**Research Use Only. Not for
diagnostic or therapeutic use.**

EB09870 - Goat Anti-LSP1 Antibody

Size: 100µg specific antibody in 200µl



Target Protein

Principal Names: 47 kDa actin binding protein, 52 kDa phosphoprotein, F-actin binding and cytoskeleton associated protein, leufactin (leukocyte F-actin binding protein), leukocyte-specific protein 1, lymphocyte-specific ant, lymphocyte-specific protein 1, pp52, WP34, LSP1

Official Symbol: LSP1

Accession Number(s): NP_002330.1; NP_001013271.1

Human GeneID(s): [4046](#)

Non-Human GeneID(s): 16331 (mouse), 54259 (rat)

Important Comments: This antibody is expected to recognize both reported isoforms (NP_002330.1; NP_001013271.1). Reported variants represent identical protein: NP_001013273.1, NP_001013271.1, NP_001013272.1

Immunogen

Peptide with sequence C-RYKFVATGHGKYEKV, from the C Terminus of the protein sequence according to NP_002330.1; NP_001013271.1.

Please note the [peptide](#) is available for sale.

Purification and Storage

Purified from goat serum by ammonium sulphate precipitation followed by antigen affinity chromatography using the immunizing peptide.

Supplied at 0.5 mg/ml in Tris saline, 0.02% sodium azide, pH7.3 with 0.5% bovine serum albumin.

Aliquot and store at -20°C. Minimize freezing and thawing.

Applications Tested

Peptide ELISA: antibody detection limit dilution 1:16000.

Western blot: Approx 50kDa band observed in Human Peripheral Blood Mononucleocytes, (PBMs) and Tonsil lysates and in lysates of cell line Daudi, and approx. 50-55kDa in Human Tonsil and Mouse Spleen lysates (calculated MW of 37.2kDa according to Human NP_002330.1 and 36.7kDa according to Mouse NP_001129543.1).

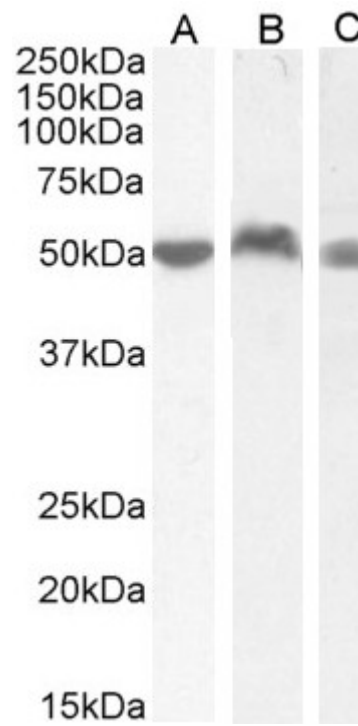
These molecular weights are routinely observed by other sources Recommended concentration: 0.01-0.1µg/ml. Primary incubation 1 hour at room temperature.

IHC: Paraffin embedded Colon, MALT. Recommended concentration: 3.75µg/ml.

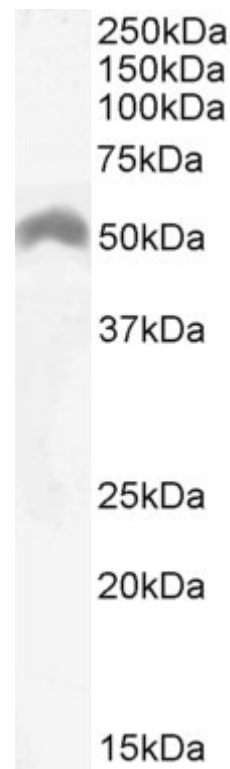
Species Reactivity

Tested: Human, Mouse

Expected from sequence similarity: Human, Mouse, Rat, Dog, Cow



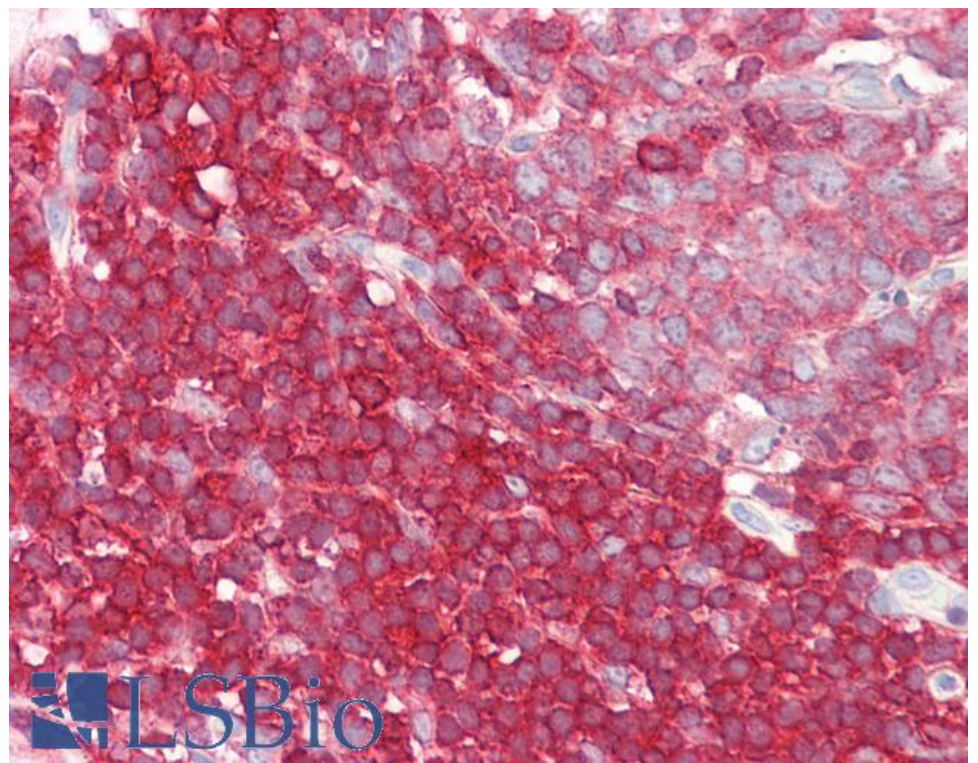
EB09870 (0.05 μ g/ml) staining of Human PBM (A), (0.03 μ g/ml) Lymph Node (B) and Tonsil (C) lysate (35 μ g protein in RIPA buffer). Detected by chemiluminescence.



EB09870 (0.03 μ g/ml) staining of Daudi cell ysate (35 μ g protein in RIPA buffer). Detected by chemiluminescence.



EB09870 (0.01 μ g/ml) staining of Mouse Spleen lysate (35 μ g protein in RIPA buffer). Detected by chemiluminescence.



EB09870 (3.75 μ g/ml) staining of paraffin embedded Human Colon. Steamed antigen retrieval with citrate buffer pH 6, AP-staining.