



Everest Biotech Ltd
Cherwell Innovation Centre
77 Heyford Park
Upper Heyford
Oxfordshire
OX25 5HD, United Kingdom

everestbiotech.com

sales@everestbiotech.com

support@everestbiotech.com

Tel +44 1869 238326

Fax +44 1869 238327

**Research Use Only. Not for
diagnostic or therapeutic use.**

Storage: For long-term storage
keep aliquots at -20°C. (Store no
longer than 12 months at 4°C).
Minimize freezing and thawing.

EB08987 - Goat Anti-LTF Antibody

Size: 100µg specific antibody in 200µl



Target Protein

Principal Names: talalactoferrin, neutrophil lactoferrin, lactoferrin, growth-inhibiting protein 12, LF, HLF2, GIG12, lactotransferrin, LTF

Official Symbol: LTF

Accession Number(s): NP_002334.2

Human GeneID(s): [4057](#)

Immunogen

Peptide with sequence C-ENYKSQQSSDPDP, from the internal region of the protein sequence according to NP_002334.2.

Please note the [peptide](#) is available for sale.

Purification and Storage

Purified from goat serum by ammonium sulphate precipitation followed by antigen affinity chromatography using the immunizing peptide.

Supplied at 0.5 mg/ml in Tris saline, 0.02% sodium azide, pH7.3 with 0.5% bovine serum albumin.

Aliquot and store at -20°C. Minimize freezing and thawing.

Applications Tested

Peptide ELISA: antibody detection limit dilution 1:32000.

Western blot: Approx. 85kDa band observed in Human Peripheral Mononucleocyte lysates (calculated MW of 78.2kDa according to NP_002334.2). Recommended concentration: 0.05-0.2µg/ml.

IHC: In paraffin embedded blood vessel shows strong staining of cytoplasm of neutrophils.. Recommended concentration, 2-4µg/ml.

Enzyme immunoassay: Sandwich-type ELISA with increasing amount of recombinant LTF captured by a rabbit antibody. Recommended reporter concentration: 5-10ug/ml

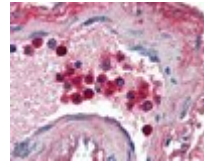
Species Reactivity

Tested: Human

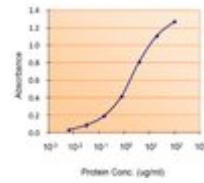
Expected from sequence similarity: Human



EB08987 (0.05 μ g/ml) staining of Peripheral Blood Mononucleocyte lysate (35 μ g protein in RIPA buffer). Primary incubation was 1 hour. Detected by chemiluminescence.



EB08987 (2 μ g/ml) staining of paraffin embedded Human Blood Vessel. Steamed antigen retrieval with citrate buffer pH 6, AP-staining.



EB08987 (5 μ g/ml) as the reporter with EB002013 as the capture rabbit antibody (5 μ g/ml).