



## UK Office

### Everest Biotech Ltd

Cherwell Innovation Centre  
77 Heyford Park  
Upper Heyford  
Oxfordshire  
OX25 5HD  
UK

Enquiries:

[info@everestbiotech.com](mailto:info@everestbiotech.com)

Sales:

[sales@everestbiotech.com](mailto:sales@everestbiotech.com)

Tech support:

[support@everestbiotech.com](mailto:support@everestbiotech.com)

Tel: +44 (0)1869 238326

Fax: +44 (0)1869 238327

## US Office

### Everest Biotech c/o Abcore

405 Maple Street, Suite A106  
Ramona,  
CA 92065  
USA

Inquiries:

[info@everestbiotech.com](mailto:info@everestbiotech.com)

Sales:

[usasales@everestbiotech.com](mailto:usasales@everestbiotech.com)

Tech support:

[support@everestbiotech.com](mailto:support@everestbiotech.com)

Tel: 888-320-4628 (toll-free)

Fax: 888-841-9041

[www.everestbiotech.com](http://www.everestbiotech.com)

**Research Use Only. Not for  
diagnostic or therapeutic use.**

## EB10216 - Goat Anti-LY6E (mouse) Antibody

Size: 100µg specific antibody in 200µl



### Target Protein

**Principal Names:** lymphocyte antigen 6 complex, locus E, retinoic acid induced gene E, RIGE, RIG-E, SCA2, SCA-2, TSA-1, LY6E

**Official Symbol:** LY6E

**Accession Number(s):** NP\_002337.1; NP\_032555.1

**Non-Human GeneID(s):** 17069 (mouse)

**Important Comments:** Reported variants represent identical protein: NP\_002337.1, NP\_001120685.1

### Immunogen

Peptide with sequence SCQEKDHYCIT, from the internal region of the protein sequence according to NP\_002337.1; NP\_032555.1.

Please note the [peptide](#) is available for sale.

### Purification and Storage

Purified from goat serum by ammonium sulphate precipitation followed by antigen affinity chromatography using the immunizing peptide.

Supplied at 0.5 mg/ml in Tris saline, 0.02% sodium azide, pH7.3 with 0.5% bovine serum albumin.

Aliquot and store at -20°C. Minimize freezing and thawing.

### Applications Tested

**Peptide ELISA:** antibody detection limit dilution 1:16000.

**IHC:** Customer obtained staining in Mouse Placenta in a pattern consistent with in situ hybridisation results, and no staining in KO mice. This antibody has been successfully used in IHC on Mouse: M. Hughes et al, Placenta. 2013 Sep;34(9):831-5. PMID: 23830620.

**Immunofluorescence:** Strong expression of the protein seen in the membrane of NIH3T3 cells. Recommended concentration: 10µg/ml

**Flow Cytometry:** Flow cytometric analysis of NIH3T3 cells. Recommended concentration: 10ug/ml.

### Species Reactivity

**Tested:** Mouse

**Expected from sequence similarity:** Mouse

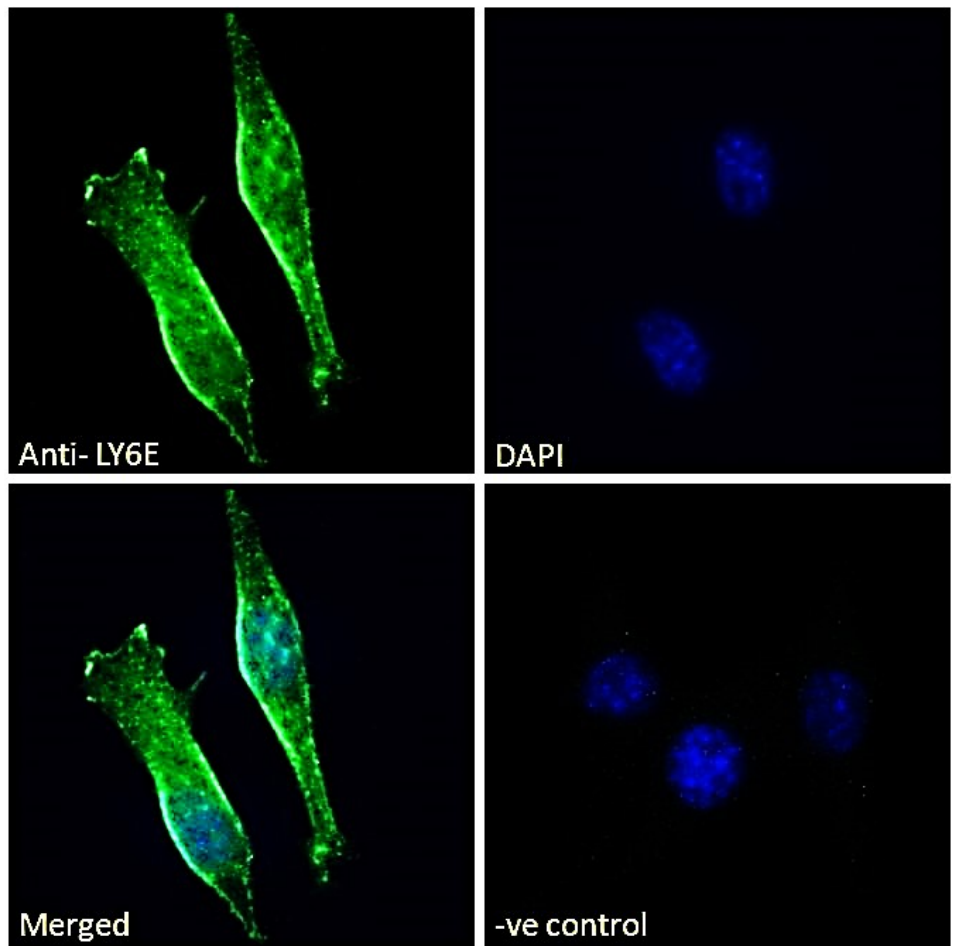
### Specific Reference

**This antibody has been successfully used in IHC on Mouse:**

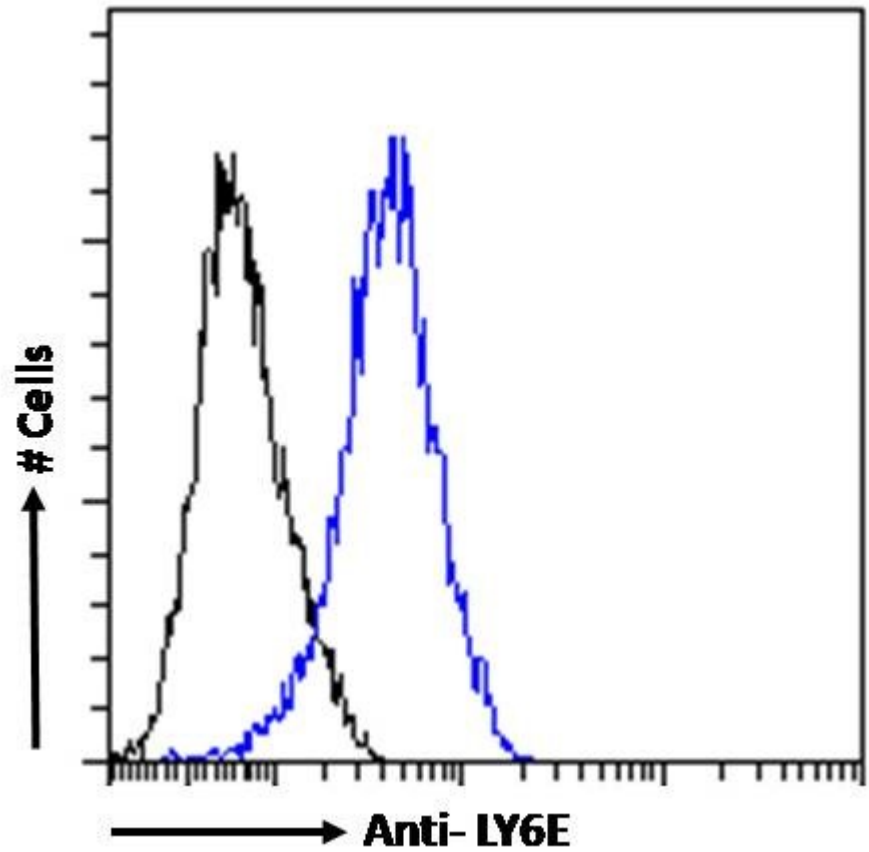
M. Hughes, B.V. Natale, D.G. Simmons, D.R.C. Natale

Ly6e expression is restricted to syncytiotrophoblast cells of the mouse placenta Placenta. 2013 Sep;34(9):831-5.

PMID: 23830620



EB10216 Immunofluorescence analysis of paraformaldehyde fixed NIH3T3 cells, permeabilized with 0.15% Triton. Primary incubation 1hr (10ug/ml) followed by Alexa Fluor 488 secondary antibody (2ug/ml), showing membrane staining. The nuclear stain is DAPI (blue). Negative control: Unimmunized goat IgG (10ug/ml) followed by Alexa Fluor 488 secondary antibody (2ug/ml).



EB10216 Flow cytometric analysis of paraformaldehyde fixed NIH3T3 cells (blue line), permeabilized with 0.5% Triton. Primary incubation 1hr (10ug/ml) followed by Alexa Fluor 488 secondary antibody (1ug/ml). IgG control: Unimmunized goat IgG (black line) followed by Alexa Fluor 488 secondary antibody.