

## International Office

### Everest Biotech Ltd

Vector Laboratories, Inc.  
6737 Mowry Ave  
Newark, CA 94560  
United States

Customer Service:

[customerservice@vectorlabs.com](mailto:customerservice@vectorlabs.com)

Technical Service:

[technical@vectorlabs.com](mailto:technical@vectorlabs.com)

Tel: +1 (800) 227-6666

[www.everestbiotech.com](http://www.everestbiotech.com)

**Research Use Only. Not for  
diagnostic or therapeutic use.**

## EB08406 - Goat Anti-LYPLAL1 Antibody

Size: 100µg specific antibody in 200µl



### Target Protein

**Principal Names:** LYPLAL1, lysophospholipase-like 1, KIAA1238

**Official Symbol:** LYPLAL1

**Accession Number(s):** NP\_620149.1

**Human GeneID(s):** [127018](#)

### Immunogen

Peptide with sequence DRFKITNDCPEHLE, from the internal region of the protein sequence according to NP\_620149.1.

Please note the [peptide](#) is available for sale.

### Purification and Storage

Purified from goat serum by ammonium sulphate precipitation followed by antigen affinity chromatography using the immunizing peptide.

Supplied at 0.5 mg/ml in Tris saline, 0.02% sodium azide, pH7.3 with 0.5% bovine serum albumin.

Aliquot and store at -20°C. Minimize freezing and thawing.

### Applications Tested

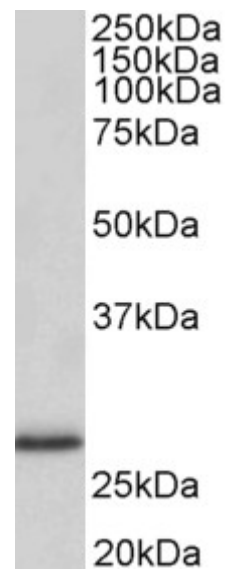
**Peptide ELISA:** antibody detection limit dilution 1:32000.

**Western blot:** Approx. 27kDa band observed in Human Adipose, Heart and Kidney lysates (calculated MW of 26.3kDa according to NP\_620149.1). Recommended concentration: 1.5-3.0µg/ml. Primary incubation was 1 hour.

### Species Reactivity

**Tested:** Human

**Expected from sequence similarity:** Human



EB08406 (1.5µg/ml) staining of Human Adipose lysate (35µg protein in RIPA buffer). Detected by chemiluminescence.