



UK Office

Everest Biotech Ltd

Cherwell Innovation Centre
77 Heyford Park
Upper Heyford
Oxfordshire
OX25 5HD
UK

Enquiries:

info@everestbiotech.com

Sales:

sales@everestbiotech.com

Tech support:

support@everestbiotech.com

Tel: +44 (0)1869 238326

Fax: +44 (0)1869 238327

US Office

Everest Biotech c/o Abcore

405 Maple Street, Suite A106
Ramona,
CA 92065
USA

Inquiries:

info@everestbiotech.com

Sales:

usasales@everestbiotech.com

Tech support:

support@everestbiotech.com

Tel: 888-320-4628 (toll-free)

Fax: 888-841-9041

www.everestbiotech.com

**Research Use Only. Not for
diagnostic or therapeutic use.**

EB06634 - Goat Anti-Lysosomal hyaluronidase Antibody

Size: 100µg specific antibody in 200µl



Target Protein

Principal Names: HYAL2, LUCA2, LuCa-2, hyaluronoglucosaminidase 2, PH-20 homolog, hyaluronidase 2, lysosomal hyaluronidase

Official Symbol: HYAL2

Accession Number(s): NP_003764.3

Human GeneID(s): [8692](#)

Important Comments: Reported variants NP_003764 and NP_149348 represent identical proteins.

Immunogen

Peptide with sequence RAGPGPTVTLAC, from the N Terminus of the protein sequence according to NP_003764.3.

Please note the [peptide](#) is available for sale.

Purification and Storage

Purified from goat serum by ammonium sulphate precipitation followed by antigen affinity chromatography using the immunizing peptide.

Supplied at 0.5 mg/ml in Tris saline, 0.02% sodium azide, pH7.3 with 0.5% bovine serum albumin.

Aliquot and store at -20°C. Minimize freezing and thawing.

Applications Tested

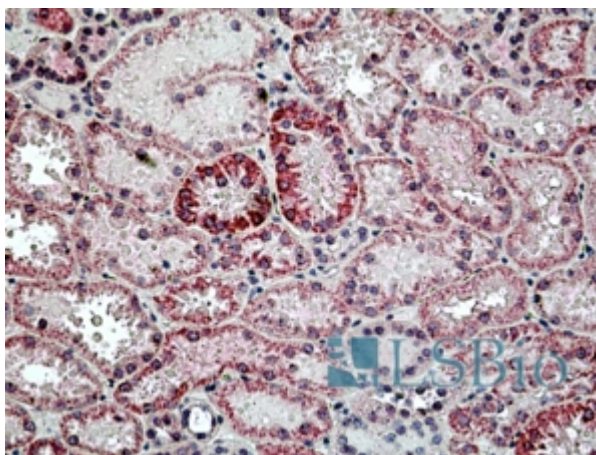
Peptide ELISA: antibody detection limit dilution 1:32000.

IHC: In paraffin embedded Human Kidney shows cytoplasm staining in DCT cells.
Recommended concentration, 3-6µg/ml.

Species Reactivity

Tested: Human

Expected from sequence similarity: Human



EB06634 (3.8µg/ml) staining of paraffin embedded Human Kidney. Steamed antigen retrieval with citrate buffer pH 6, AP-staining.