



## UK Office

### Everest Biotech Ltd

Cherwell Innovation Centre  
77 Heyford Park  
Upper Heyford  
Oxfordshire  
OX25 5HD  
UK

Enquiries:

[info@everestbiotech.com](mailto:info@everestbiotech.com)

Sales:

[sales@everestbiotech.com](mailto:sales@everestbiotech.com)

Tech support:

[support@everestbiotech.com](mailto:support@everestbiotech.com)

Tel: +44 (0)1869 238326

[www.everestbiotech.com](http://www.everestbiotech.com)

**Research Use Only. Not for  
diagnostic or therapeutic use.**

## EB12641 - Goat Anti-lysyl oxidase Antibody

Size: 100µg specific antibody in 200µl



### Target Protein

**Principal Names:** LOX, lysyl oxidase, protein-lysine 6-oxidase

**Official Symbol:** LOX

**Accession Number(s):** NP\_002308.2; NP\_001171573.1

**Human GeneID(s):** [4015](#)

**Important Comments:** This antibody is expected to recognize both reported isoforms (NP\_002308.2; NP\_001171573.1).

### Immunogen

Peptide with sequence C-STAYRADVRDYDHR, from the internal region of the protein sequence according to NP\_002308.2; NP\_001171573.1.

Please note the [peptide](#) is available for sale.

### Purification and Storage

Purified from goat serum by ammonium sulphate precipitation followed by antigen affinity chromatography using the immunizing peptide.

Supplied at 0.5 mg/ml in Tris saline, 0.02% sodium azide, pH7.3 with 0.5% bovine serum albumin.

Aliquot and store at -20°C. Minimize freezing and thawing.

### Applications Tested

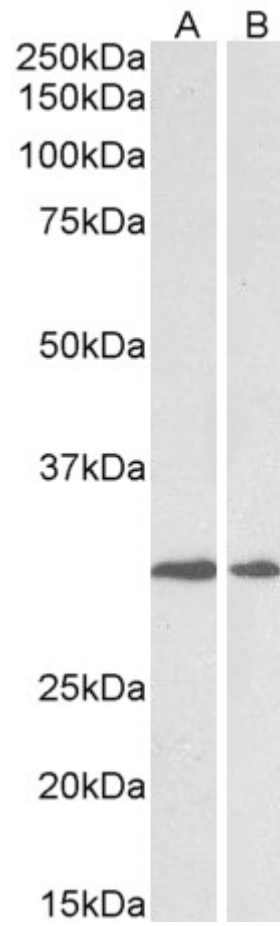
**Peptide ELISA:** antibody detection limit dilution 1:128000.

**Western blot:** Approx 30-33kDa band observed in Human Heart and Human Placenta lysates (calculated MW of 46.9kDa according to NP\_002308.2). The observed molecular weight corresponds to earlier findings in literature with different antibodies (Kuivaniemi et al, J Biol Chem. 1984 Jun 10;259(11):6996-7002). Recommended concentration: 0.3-1µg/ml.

### Species Reactivity

**Tested:** Human

**Expected from sequence similarity:** Human, Pig



EB12641 (0.5 $\mu$ g/ml) staining of Human Heart (A) and Placenta (B) lysates (35 $\mu$ g protein in RIPA buffer). Primary incubation was 1 hour. Detected by chemiluminescence.