



UK Office

Everest Biotech Ltd

Cherwell Innovation Centre
77 Heyford Park
Upper Heyford
Oxfordshire
OX25 5HD
UK

Enquiries:

info@everestbiotech.com

Sales:

sales@everestbiotech.com

Tech support:

support@everestbiotech.com

Tel: +44 (0)1869 238326

www.everestbiotech.com

**Research Use Only. Not for
diagnostic or therapeutic use.**

EB07398 - Goat Anti-M1 mAChR / CHRM1 Antibody

Size: 100µg specific antibody in 200µl



Target Protein

Principal Names: CHRM1, M1 mAChR, cholinergic receptor, muscarinic 1, HM1, M1, MGC30125, muscarinic acetylcholine receptor M1

Official Symbol: CHRM1

Accession Number(s): NP_000729.2

Human GeneID(s): [1128](#)

Non-Human GeneID(s): 12669 (mouse), 25229 (rat)

Immunogen

Peptide with sequence C-DKRRWRKIPKRPQSVH, from the C Terminus of the protein sequence according to NP_000729.2.

Please note the [peptide](#) is available for sale.

Purification and Storage

Purified from goat serum by ammonium sulphate precipitation followed by antigen affinity chromatography using the immunizing peptide.

Supplied at 0.5 mg/ml in Tris saline, 0.02% sodium azide, pH7.3 with 0.5% bovine serum albumin.

Aliquot and store at -20°C. Minimize freezing and thawing.

Applications Tested

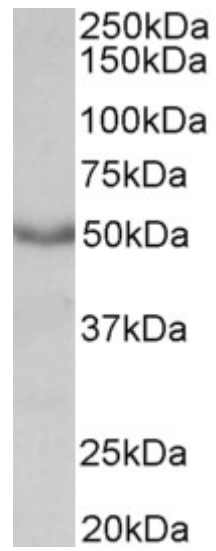
Peptide ELISA: antibody detection limit dilution 1:64000.

Western blot: Approx 50kDa band observed in Mouse Heart lysates (calculated MW of 51.4kDa according to NP_000729.2). Recommended concentration: 0.3-1µg/ml.

Species Reactivity

Tested: Mouse

Expected from sequence similarity: Human, Mouse, Rat, Dog



EB07398 (0.3 μ g/ml) staining of Mouse Heart lysate (35 μ g protein in RIPA buffer). Primary incubation was 1 hour.
Detected by chemiluminescence.