



Everest Biotech Ltd  
Cherwell Innovation Centre  
77 Heyford Park  
Upper Heyford  
Oxfordshire  
OX25 5HD, United Kingdom

[everestbiotech.com](http://everestbiotech.com)

[sales@everestbiotech.com](mailto:sales@everestbiotech.com)

[support@everestbiotech.com](mailto:support@everestbiotech.com)

Tel +44 1869 238326

Fax +44 1869 238327

**Research Use Only. Not for  
diagnostic or therapeutic use.**

Storage: For long-term storage  
keep aliquots at -20°C. (Store no  
longer than 12 months at 4°C).  
Minimize freezing and thawing.

## EB05504 - Goat Anti-MAGOH Antibody

Size: 100µg specific antibody in 200µl



### Target Protein

**Principal Names:** MAGOHA, RP5-1024G6.4, mago-nashi homolog,  
proliferation-associated (Drosophila), MAGOH

**Official Symbol:** MAGOH

**Accession Number(s):** NP\_002361.1

**Human GeneID(s):** [4116](#)

**Non-Human GeneID(s):** 17149 (mouse)

### Immunogen

Peptide with sequence C-SLIGLHFKIKPI, from the C Terminus of the protein sequence  
according to NP\_002361.1.

Please note the [peptide](#) is available for sale.

### Purification and Storage

Purified from goat serum by ammonium sulphate precipitation followed by antigen affinity  
chromatography using the immunizing peptide.

Supplied at 0.5 mg/ml in Tris saline, 0.02% sodium azide, pH7.3 with 0.5% bovine serum  
albumin.

Aliquot and store at -20°C. Minimize freezing and thawing.

### Applications Tested

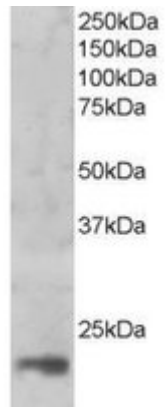
**Peptide ELISA:** antibody detection limit dilution 1:2000.

**Western blot:** Approx 17kDa band observed in nuclear lysates of cell line HeLa  
(calculated MW of 17.2kDa according to NP\_002361.1). Recommended concentration:  
1-3µg/ml. (Data obtained from a previous batch).

### Species Reactivity

**Tested:** Human

**Expected from sequence similarity:** Human, Mouse, Rat, Dog, Cow



EB05504 (1ug/ml) staining of nuclear HeLa lysate (35µg protein in RIPA buffer). Primary incubation was 1 hour.  
Detected by chemiluminescence.