



Everest Biotech Ltd
Cherwell Innovation Centre
77 Heyford Park
Upper Heyford
Oxfordshire
OX25 5HD, United Kingdom

everestbiotech.com

sales@everestbiotech.com

support@everestbiotech.com

Tel +44 1869 238326

Fax +44 1869 238327

Research Use Only. Not for diagnostic or therapeutic use.

Storage: For long-term storage keep aliquots at -20°C. (Store no longer than 12 months at 4°C). Minimize freezing and thawing.

EB06756 - Goat Anti-Makorin Antibody

Size: 100µg specific antibody in 200µl



Target Protein

Principal Names: FLJ21334, RNF61, HGNC:7112, ring finger protein 1, makorin, MKRN1

Official Symbol: MKRN1

Accession Number(s): NP_038474.1; NP_001138597.1

Human GeneID(s): [23608](#)

Important Comments: This antibody may cross react with MKRN4 (52.9kDa).

Immunogen

Peptide with sequence C-VTKEESEKEQTAVET, from the internal region of the protein sequence according to NP_038474.1; NP_001138597.1.

Please note the [peptide](#) is available for sale.

Purification and Storage

Purified from goat serum by ammonium sulphate precipitation followed by antigen affinity chromatography using the immunizing peptide.

Supplied at 0.5 mg/ml in Tris saline, 0.02% sodium azide, pH7.3 with 0.5% bovine serum albumin.

Aliquot and store at -20°C. Minimize freezing and thawing.

Applications Tested

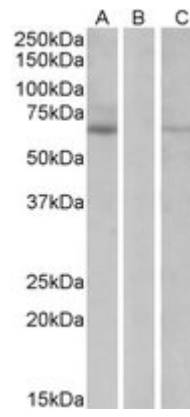
Peptide ELISA: antibody detection limit dilution 1:8000.

Western blot: In transfected HEK293 transiently expressing full-length Human MKRN1 (myc and DYKDDDDK tagged), a band of approx. 60kDa was observed. No bands were observed in mock-transfected HEK293 and the same band was observed using anti-DYKDDDDK tag antibody. Recommended concentration, 1-2µg/ml.

Species Reactivity

Tested: Human

Expected from sequence similarity: Human, Dog



HEK293 lysate (10ug protein in RIPA buffer) over expressing Human MKRN1 with DYKDDDDK tag probed with EB06756 (1ug/ml) in Lane A and probed with anti- DYKDDDDK Tag (1/1000) in lane C. Mock-transfected HEK293 probed with EB06756 (1mg/ml) in Lane B. Primary incubations were for 1 hour. Detected by chemiluminescence.