



## UK Office

### Everest Biotech Ltd

Cherwell Innovation Centre  
77 Heyford Park  
Upper Heyford  
Oxfordshire  
OX25 5HD  
UK

Enquiries:

[info@everestbiotech.com](mailto:info@everestbiotech.com)

Sales:

[sales@everestbiotech.com](mailto:sales@everestbiotech.com)

Tech support:

[support@everestbiotech.com](mailto:support@everestbiotech.com)

Tel: +44 (0)1869 238326

[www.everestbiotech.com](http://www.everestbiotech.com)

**Research Use Only. Not for  
diagnostic or therapeutic use.**

## EB10976 - Goat Anti-Malt1 (Rat isoform 2) Antibody

Size: 100µg specific antibody in 200µl



### Target Protein

**Principal Names:** Malt1, mucosa associated lymphoid tissue lymphoma translocation gene 1, , MLT, MLT1, MALT associated translocation, MALT lymphoma-associated translocation, MALT-lymphoma associated translocation, caspase-like protein

**Official Symbol:** Malt1

**Accession Number(s):** XP\_225927.5

**Non-Human GeneID(s):** 240354 (mouse), 307366 (rat)

**Important Comments:** This antibody is expected to recognize reported isoform 2 (XP\_225927.5) only.

### Immunogen

Peptide with sequence C-RPDNKEQTGQPLAK, from the internal region of the protein sequence according to XP\_225927.5.

Please note the [peptide](#) is available for sale.

### Purification and Storage

Purified from goat serum by ammonium sulphate precipitation followed by antigen affinity chromatography using the immunizing peptide.

Supplied at 0.5 mg/ml in Tris saline, 0.02% sodium azide, pH7.3 with 0.5% bovine serum albumin.

Aliquot and store at -20°C. Minimize freezing and thawing.

### Applications Tested

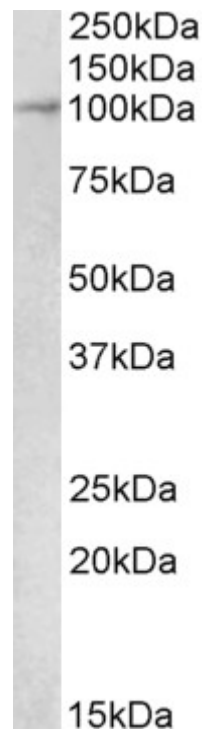
**Peptide ELISA:** antibody detection limit dilution 1:32000.

**Western blot:** Approx 100kDa band observed in Mouse and Rat Kidney lysates (calculated MW of 91.8kDa according to XP\_225927.5). Recommended concentration: 1-3µg/ml.

### Species Reactivity

**Tested:** Mouse, Rat

**Expected from sequence similarity:** Mouse, Rat



EB10976 (2 $\mu$ g/ml) staining of Mouse Kidney lysate (35 $\mu$ g protein in RIPA buffer). Primary incubation was 1 hour.  
Detected by chemiluminescence.