

UK Office

Everest Biotech Ltd

Cherwell Innovation Centre
77 Heyford Park
Upper Heyford
Oxfordshire
OX25 5HD
UK

Enquiries:

info@everestbiotech.com

Sales:

sales@everestbiotech.com

Tech support:

support@everestbiotech.com

Tel: +44 (0)1869 238326

www.everestbiotech.com

**Research Use Only. Not for
diagnostic or therapeutic use.**

EB12289 - Goat Anti-MAP2K2 / MEK2 Antibody

Size: 100µg specific antibody in 200µl



Target Protein

Principal Names: MAP2K2, mitogen-activated protein kinase kinase 2, MAPKK2, MEK2, MKK2, PRKMK2, ERK activator kinase 2, MAP kinase kinase 2, MAPK/ERK kinase 2, dual specificity mitogen-activated protein kinase kinase 2, mitogen-activated protein kinase kinase 2, p45

Official Symbol: MAP2K2

Accession Number(s): NP_109587.1

Human GeneID(s): [5605](#)

Immunogen

Peptide with sequence C-DLKMLTNHTFIKRS, from the internal region of the protein sequence according to NP_109587.1.

Please note the [peptide](#) is available for sale.

Purification and Storage

Purified from goat serum by ammonium sulphate precipitation followed by antigen affinity chromatography using the immunizing peptide.

Supplied at 0.5 mg/ml in Tris saline, 0.02% sodium azide, pH7.3 with 0.5% bovine serum albumin.

Aliquot and store at -20°C. Minimize freezing and thawing.

Applications Tested

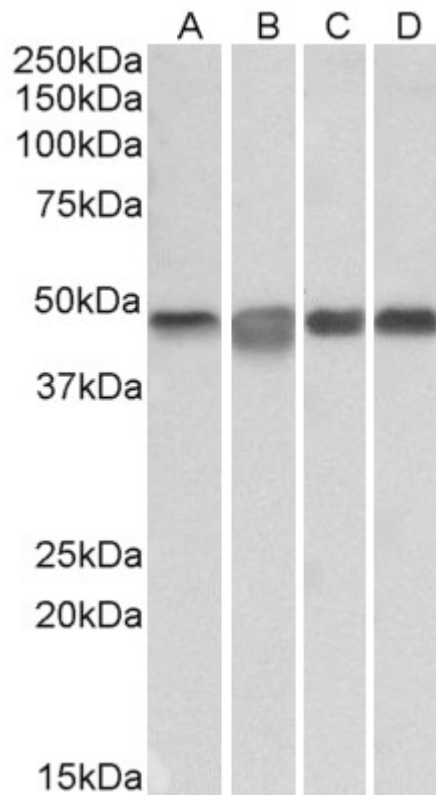
Peptide ELISA: antibody detection limit dilution 1:128000.

Western blot: Approx 48kDa band observed in lysates of cell lines Daudi, Jurkat, K562 and Molt4 (calculated MW of 44.4kDa according to NP_109587.1). Recommended concentration: 0.1-0.3µg/ml.

Species Reactivity

Tested: Human

Expected from sequence similarity: Human



EB12289 (0.3 μ g/ml) staining of Daudi (A), Jurkat (B), K562 (C) and Molt4 (D) lysates (35 μ g protein in RIPA buffer). Primary incubation was 1 hour. Detected by chemiluminescence.