



## UK Office

### Everest Biotech Ltd

Cherwell Innovation Centre  
77 Heyford Park  
Upper Heyford  
Oxfordshire  
OX25 5HD  
UK

Enquiries:

[info@everestbiotech.com](mailto:info@everestbiotech.com)

Sales:

[sales@everestbiotech.com](mailto:sales@everestbiotech.com)

Tech support:

[support@everestbiotech.com](mailto:support@everestbiotech.com)

Tel: +44 (0)1869 238326

Fax: +44 (0)1869 238327

## US Office

### Everest Biotech c/o Abcore

405 Maple Street, Suite A106  
Ramona,  
CA 92065  
USA

Inquiries:

[info@everestbiotech.com](mailto:info@everestbiotech.com)

Sales:

[usasales@everestbiotech.com](mailto:usasales@everestbiotech.com)

Tech support:

[support@everestbiotech.com](mailto:support@everestbiotech.com)

Tel: 888-320-4628 (toll-free)

Fax: 888-841-9041

[www.everestbiotech.com](http://www.everestbiotech.com)

**Research Use Only. Not for  
diagnostic or therapeutic use.**

## EB11930 - Goat Anti-MAPKAPK2 (aa44-55) Antibody

Size: 100µg specific antibody in 200µl



### Target Protein

**Principal Names:** MAPKAPK2, mitogen-activated protein kinase-activated protein kinase 2, MAPKAP-K2, MK-2, MK2, MAP kinase-activated protein kinase 2, MAPK-activated protein kinase 2, MAPKAP kinase 2

**Official Symbol:** MAPKAPK2

**Accession Number(s):** NP\_004750.1; NP\_116584.2

**Human GeneID(s):** [9261](#)

**Non-Human GeneID(s):** 17164 (mouse), 289014 (rat)

**Important Comments:** This antibody is expected to recognize both reported isoforms (NP\_004750.1; NP\_116584.2).

### Immunogen

Peptide with sequence C-PQFHVKSGLQIK, from the internal region of the protein sequence according to NP\_004750.1; NP\_116584.2.

Please note the [peptide](#) is available for sale.

### Purification and Storage

Purified from goat serum by ammonium sulphate precipitation followed by antigen affinity chromatography using the immunizing peptide.

Supplied at 0.5 mg/ml in Tris saline, 0.02% sodium azide, pH7.3 with 0.5% bovine serum albumin.

Aliquot and store at -20°C. Minimize freezing and thawing.

### Applications Tested

**Peptide ELISA:** antibody detection limit dilution 1:32000.

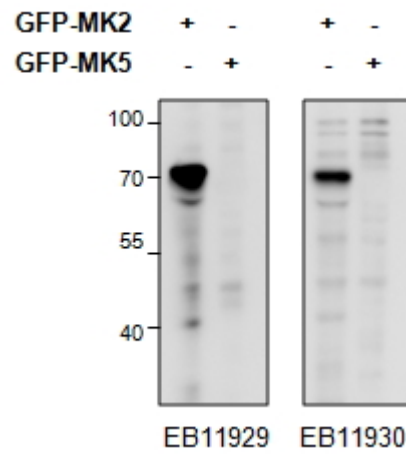
**Western blot:** In transfected HEK293 transiently expressing either Mouse MK2 fused to GFP or the similar Mouse MK5 fused to GFP, only the expected band was observed in the MK2 lane after EB11929 and EB11930 labeling. Data obtained from Dr. M. B. Menon, Inst. Biochemistry, Hannover Medical School, Germany. Recommended concentration: 0.5-2µg/ml.

**Immunoprecipitation:** MK2/MK3 double knockout Mouse Embryonic Fibroblasts (MEFs) retrovirally transduced with MK2 or empty vector were lysed from confluent plates and used for IP with 1.5µg EB11929 or EB11930. Western blots of the IP were labelled with rabbit anti-MK2 (CST). An approx 45kDa of MK2 is only precipitated from lysates of those KO MEFs that have been rescued by the MK2 expression construct as described in PMID: 19743408. Data obtained from Dr. M. B. Menon, Inst. Biochemistry, Hannover Medical School, Germany.

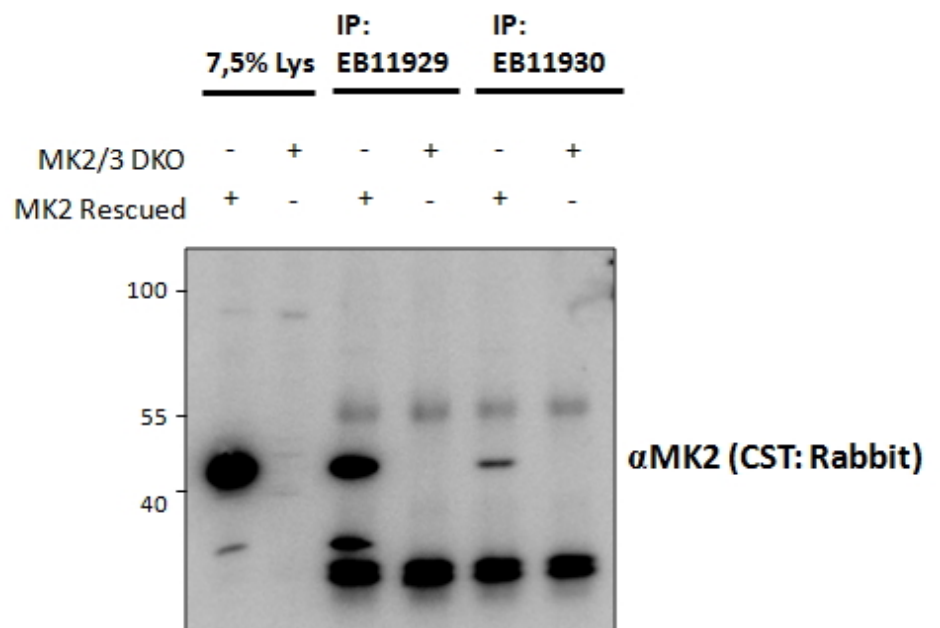
### Species Reactivity

**Tested:** Mouse

**Expected from sequence similarity:** Human, Mouse, Rat



HEK293 overexpressing Mouse MK2 fused to GFP or overexpressing MK5 fused to GFP and probed with EB11929 (0.5ug/ml) in the left panel and with EB11930 (0.5ug/ml) in the right panel.



EB11929 and EB11930 (1.5ug) immunoprecipitations from lysates of MK2/MK3 double knockout MEFs, with (third and fifth lanes) and without (fourth and sixth lanes) rescued MK2 expression through retroviral transduction. The corresponding lysates (first and second lane resp.) were analyzed in parallel in this Western blot labelled with rabbit anti-MK2.