



## UK Office

### Everest Biotech Ltd

Cherwell Innovation Centre  
77 Heyford Park  
Upper Heyford  
Oxfordshire  
OX25 5HD  
UK

Enquiries:

[info@everestbiotech.com](mailto:info@everestbiotech.com)

Sales:

[sales@everestbiotech.com](mailto:sales@everestbiotech.com)

Tech support:

[support@everestbiotech.com](mailto:support@everestbiotech.com)

Tel: +44 (0)1869 238326

[www.everestbiotech.com](http://www.everestbiotech.com)

**Research Use Only. Not for  
diagnostic or therapeutic use.**

## EB09828 - Goat Anti-MAPRE3 (aa151-164) Antibody

Size: 100µg specific antibody in 200µl



### Target Protein

**Principal Names:** APC binding protein, EB3, EBF3, EBF3-S, microtubule-associated protein, RP/EB family, member 3, RP3, MAPRE3

**Official Symbol:** MAPRE3

**Accession Number(s):** NP\_036458.2

**Human GeneID(s):** [22924](#)

**Non-Human GeneID(s):** 100732 (mouse)

### Immunogen

Peptide with sequence C-KLIGTAVPQRTSPT, from the internal region of the protein sequence according to NP\_036458.2.

Please note the [peptide](#) is available for sale.

### Purification and Storage

Purified from goat serum by ammonium sulphate precipitation followed by antigen affinity chromatography using the immunizing peptide.

Supplied at 0.5 mg/ml in Tris saline, 0.02% sodium azide, pH7.3 with 0.5% bovine serum albumin.

Aliquot and store at -20°C. Minimize freezing and thawing.

### Applications Tested

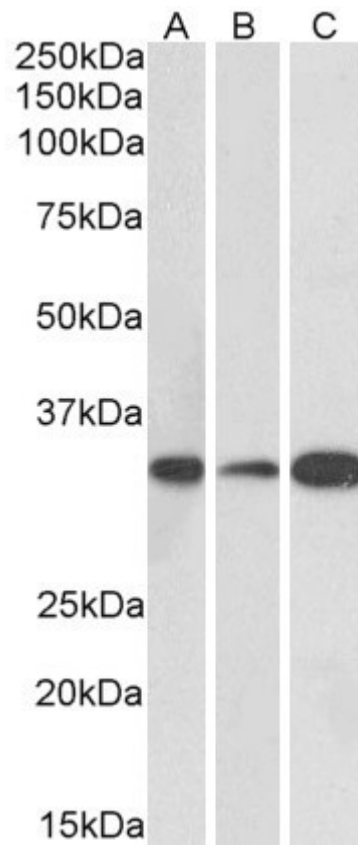
**Peptide ELISA:** antibody detection limit dilution 1:16000.

**Western blot:** Approx 33kDa band observed in Human (Cerebellum), Mouse and Rat Brain lysates (calculated MW of 32.0kDa according to Human NP\_036458.2, Mouse NP\_579928.1 and Rat NP\_001007657.1). Recommended concentration: 0.1-0.3µg/ml.

### Species Reactivity

**Tested:** Human, Mouse, Rat

**Expected from sequence similarity:** Human, Mouse, Dog, Cow



EB09828 (0.1 $\mu$ g/ml) staining of Human (A), Mouse (B) and Rat (C) Brain lysate (35 $\mu$ g protein in RIPA buffer). Primary incubation was 1 hour. Detected by chemiluminescence.