

## UK Office

### Everest Biotech Ltd

Cherwell Innovation Centre  
77 Heyford Park  
Upper Heyford  
Oxfordshire  
OX25 5HD  
UK

Enquiries:

[info@everestbiotech.com](mailto:info@everestbiotech.com)

Sales:

[sales@everestbiotech.com](mailto:sales@everestbiotech.com)

Tech support:

[support@everestbiotech.com](mailto:support@everestbiotech.com)

Tel: +44 (0)1869 238326

[www.everestbiotech.com](http://www.everestbiotech.com)

**Research Use Only. Not for  
diagnostic or therapeutic use.**

## EB08235 - Goat Anti-MARCH10 Antibody

Size: 100µg specific antibody in 200µl



### Target Protein

**Principal Names:** MARCH10, membrane-associated ring finger (C3HC4) 10, FLJ35757, MARCH-X, RNF190, ring finger protein 190

**Official Symbol:** MARCH10

**Accession Number(s):** NP\_001094345.1; NP\_689811.2

**Human GeneID(s):** [162333](#)

**Non-Human GeneID(s):** 303596 (rat)

**Important Comments:** This antibody is expected to recognise both reported isoforms (NP\_001094345.1; NP\_689811.2), which are identical.

### Immunogen

Peptide with sequence C-SRNYPQRTEE, from the internal region of the protein sequence according to NP\_001094345.1; NP\_689811.2.

Please note the [peptide](#) is available for sale.

### Purification and Storage

Purified from goat serum by ammonium sulphate precipitation followed by antigen affinity chromatography using the immunizing peptide.

Supplied at 0.5 mg/ml in Tris saline, 0.02% sodium azide, pH7.3 with 0.5% bovine serum albumin.

Aliquot and store at -20°C. Minimize freezing and thawing.

### Applications Tested

**Peptide ELISA:** antibody detection limit dilution 1:8000.

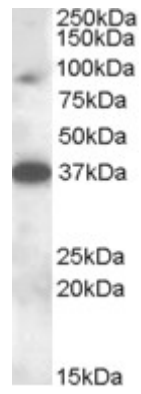
**Western blot:** Approx. 90 kDa band observed in Rat Testis lysates (calculated MW of 90.5 kDa according to Human NP\_689811.2 and of 87.9 kDa according to Mouse NP\_766156.2). Recommended concentration: 0.3-1µg/ml. Primary incubation was 1 hour. An additional band of unknown identity was also consistently observed at 37 kDa. This band was successfully blocked by incubation with the immunising peptide.

**IHC:** Paraffin embedded Human Testis. Recommended concentration: 5µg/ml.

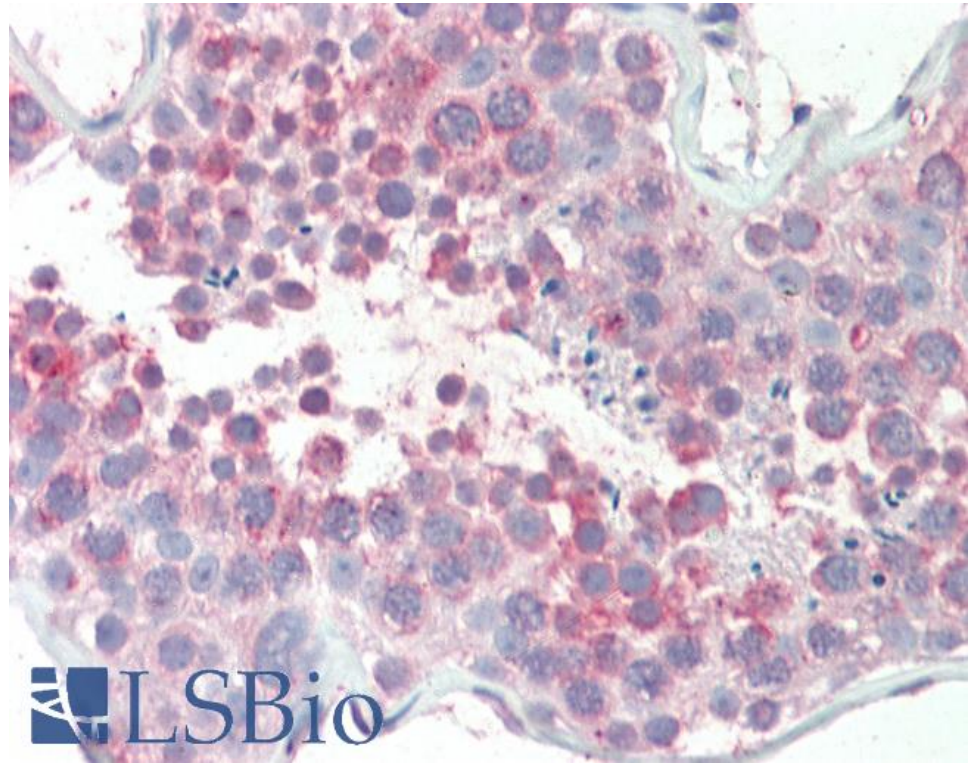
### Species Reactivity

**Tested:** Human, Rat

**Expected from sequence similarity:** Human, Rat, Cow



EB08235 (0.3µg/ml) staining of Rat Testis lysate (35µg protein in RIPA buffer). Detected by chemiluminescence.



EB08235 (5µg/ml) staining of paraffin embedded Human Testis. Steamed antigen retrieval with citrate buffer pH 6, AP-staining.