



## UK Office

### Everest Biotech Ltd

Cherwell Innovation Centre  
77 Heyford Park  
Upper Heyford  
Oxfordshire  
OX25 5HD  
UK

Enquiries:

[info@everestbiotech.com](mailto:info@everestbiotech.com)

Sales:

[sales@everestbiotech.com](mailto:sales@everestbiotech.com)

Tech support:

[support@everestbiotech.com](mailto:support@everestbiotech.com)

Tel: +44 (0)1869 238326

Fax: +44 (0)1869 238327

## US Office

### Everest Biotech c/o Abcore

405 Maple Street, Suite A106  
Ramona,  
CA 92065  
USA

Inquiries:

[info@everestbiotech.com](mailto:info@everestbiotech.com)

Sales:

[usasales@everestbiotech.com](mailto:usasales@everestbiotech.com)

Tech support:

[support@everestbiotech.com](mailto:support@everestbiotech.com)

Tel: 888-320-4628 (toll-free)

Fax: 888-841-9041

[www.everestbiotech.com](http://www.everestbiotech.com)

**Research Use Only. Not for  
diagnostic or therapeutic use.**

## EB07538 - Goat Anti-MBD2 (isoform 1) Antibody

Size: 100µg specific antibody in 200µl



### Target Protein

**Principal Names:** MBD2, methyl-CpG binding domain protein 2, DKFZp586O0821, DMTase, NY-CO-41

**Official Symbol:** MBD2

**Accession Number(s):** NP\_003918.1

**Human GeneID(s):** [8932](#)

**Non-Human GeneID(s):** 17191 (mouse)

**Important Comments:** This antibody is expected to recognize isoform 1 (NP\_003918.1) only.

### Immunogen

Peptide with sequence C-RNDPLNQNKGKPDNLN, from the internal region of the protein sequence according to NP\_003918.1.

Please note the [peptide](#) is available for sale.

### Purification and Storage

Purified from goat serum by ammonium sulphate precipitation followed by antigen affinity chromatography using the immunizing peptide.

Supplied at 0.5 mg/ml in Tris saline, 0.02% sodium azide, pH7.3 with 0.5% bovine serum albumin.

Aliquot and store at -20°C. Minimize freezing and thawing.

### Applications Tested

**Peptide ELISA:** antibody detection limit dilution 1:64000.

**Western blot:** Approx 48-50kDa band observed in lysates of cell line Jurkat (calculated MW of 43.3kDa according to NP\_003918.1). The observed molecular weight corresponds to earlier findings in literature with different antibodies (Tan et al, Mol Cell Biol. 2006 Oct;26(19):7224-35.; PMID: 16980624). Recommended concentration: 0.3-1µg/ml. Primary incubation was 1 hour. This antibody has been successfully used in WB on Human: 33283408 and 20523938.

**IHC:** Paraffin embedded Human Colon, Adrenal Gland and Skin. Recommended concentration: 2.5µg/ml.

### Species Reactivity

**Tested:** Human

**Expected from sequence similarity:** Human, Mouse, Rat, Dog

### Specific References

**This antibody has been successfully used in WB on Human:**

Cornelia G. Spruijt et al.

Cross-linking mass spectrometry reveals the structural topology of peripheral NuRD subunits relative to the core complex

FEBS Journal (2021) Volume288, Issue10 May 2021, Pages 3231-3245.

doi:10.1111/febs.15650

PMID: 33283408

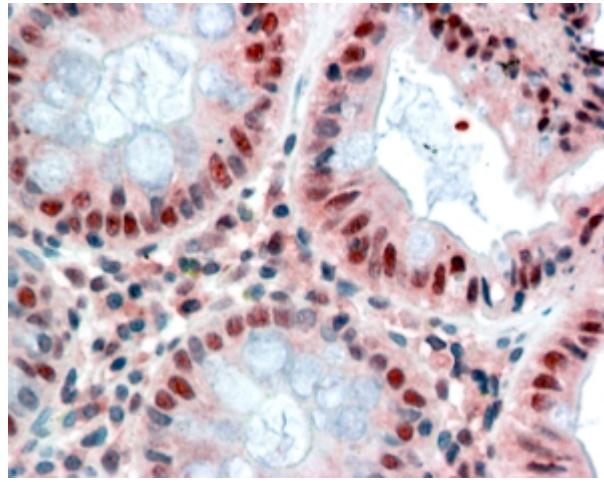
**This antibody has been successfully used in WB on Human:**

Spruijt CG, Bartels SJ, Brinkman AB, Tjeertes JV, Poser I, Stunnenberg HG, Vermeulen M.

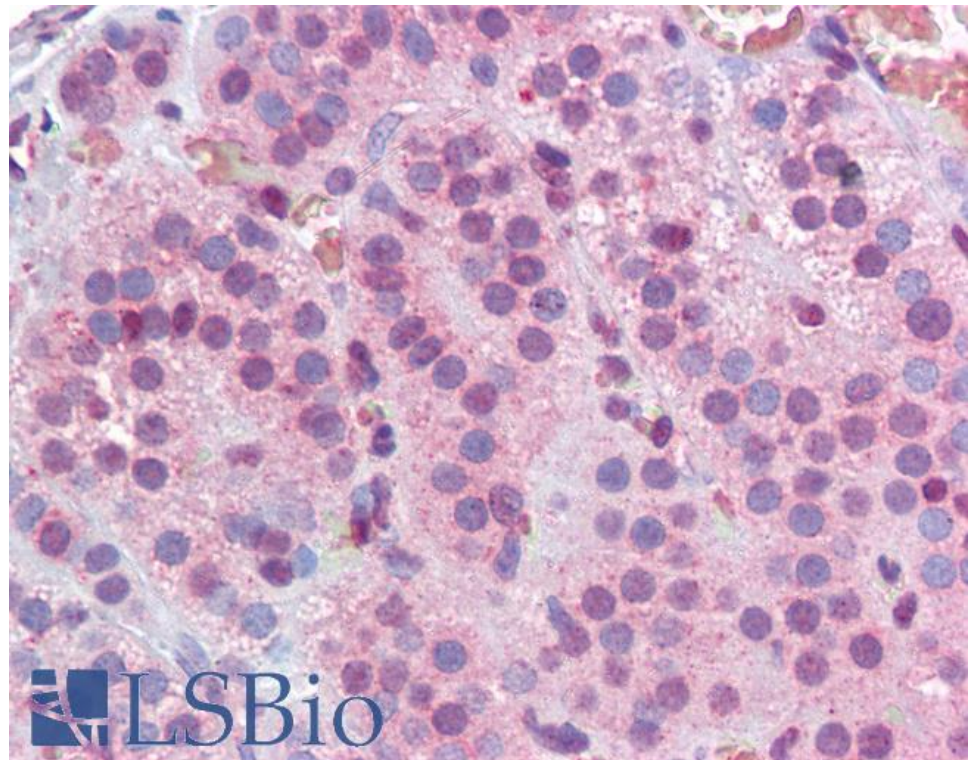
CDK2AP1/DOC-1 is a bona fide subunit of the Mi-2/NuRD complex.  
Mol Biosyst. 2010 Sep;6(9):1700-6.  
PMID: 20523938



EB07538 (0.3µg/ml) staining of Jurkat cell lysate (35µg protein in RIPA buffer). Detected by chemiluminescence.

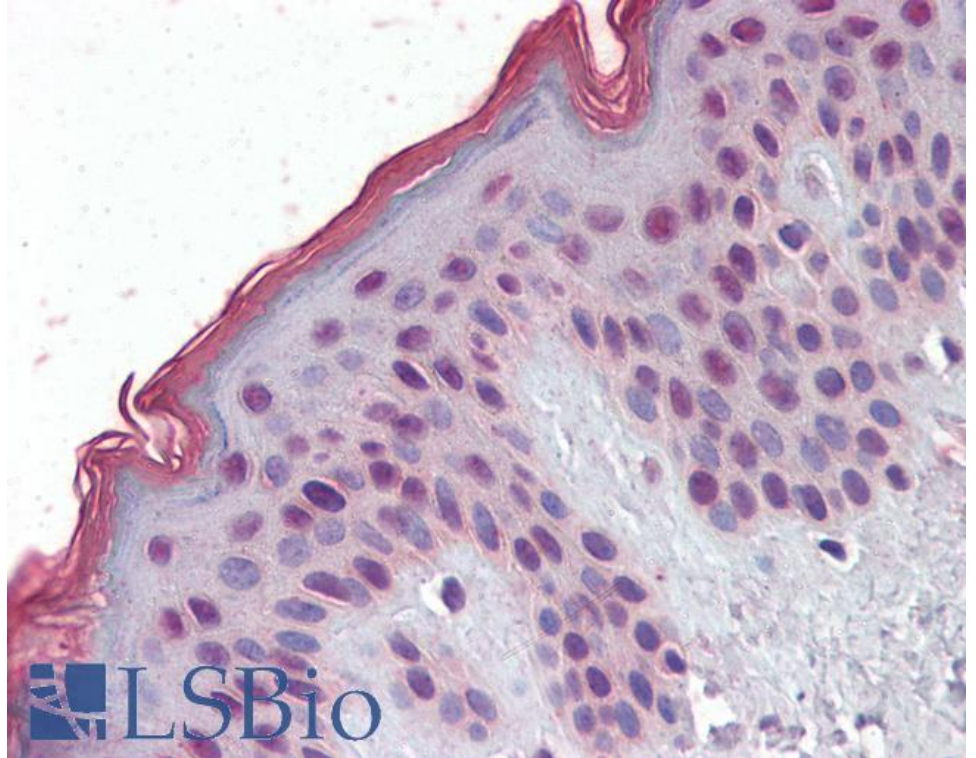


EB07538 (2.5µg/ml) staining of paraffin embedded Human Colon. Steamed antigen retrieval with citrate buffer pH 6, AP-staining.



 LSBio

EB07538 (2.5µg/ml) staining of paraffin embedded Human Adrenal Gland. Steamed antigen retrieval with citrate buffer pH 6, AP-staining.



EB07538 (2.5µg/ml) staining of paraffin embedded Human Skin. Steamed antigen retrieval with citrate buffer pH 6, AP-staining.