



UK Office

Everest Biotech Ltd

Cherwell Innovation Centre
77 Heyford Park
Upper Heyford
Oxfordshire
OX25 5HD
UK

Enquiries:

info@everestbiotech.com

Sales:

sales@everestbiotech.com

Tech support:

support@everestbiotech.com

Tel: +44 (0)1869 238326

Fax: +44 (0)1869 238327

US Office

Everest Biotech c/o Abcore

405 Maple Street, Suite A106
Ramona,
CA 92065
USA

Inquiries:

info@everestbiotech.com

Sales:

usasales@everestbiotech.com

Tech support:

support@everestbiotech.com

Tel: 888-320-4628 (toll-free)

Fax: 888-841-9041

www.everestbiotech.com

**Research Use Only. Not for
diagnostic or therapeutic use.**

EB10807 - Goat Anti-Mboat4 (mouse) Antibody

Size: 100µg specific antibody in 200µl



Target Protein

Principal Names: Mboat4, membrane bound O-acyltransferase domain containing 4, GOAT, Gm171, O-acyltransferase (membrane bound) domain containing 4, O-acyltransferase domain-containing protein 4, ghrelin O-acyltransferase, membrane-bound O-acyltransferase domain-containing

Official Symbol: Mboat4

Accession Number(s): NP_001119786.1

Human GeneID(s): [619373](#)

Non-Human GeneID(s): 234155 (mouse)

Immunogen

Peptide with sequence CHLGLHYTEYYLGEP, from the internal region of the protein sequence according to NP_001119786.1.

Please note the [peptide](#) is available for sale.

Purification and Storage

Purified from goat serum by ammonium sulphate precipitation followed by antigen affinity chromatography using the immunizing peptide.

Supplied at 0.5 mg/ml in Tris saline, 0.02% sodium azide, pH7.3 with 0.5% bovine serum albumin.

Aliquot and store at -20°C. Minimize freezing and thawing.

Applications Tested

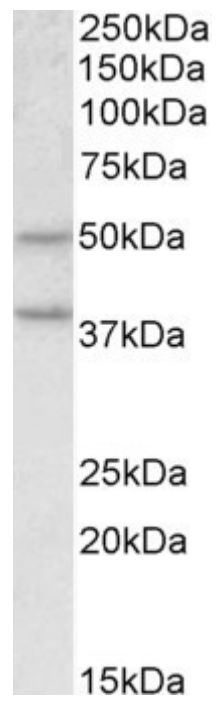
Peptide ELISA: antibody detection limit dilution 1:16000.

Western blot: Approx 50kDa band observed in Mouse Pancreas lysates (calculated MW of 49.9kDa according to NP_001119786.1). Recommended concentration: 0.5-2µg/ml. An additional band of unknown identity was also consistently observed at 38kDa. This band was successfully blocked by incubation with the immunizing peptide. We would appreciate any feedback from people in the field - have any such results been reported with other antibodies/lysates? Have any further splice variants/modified forms been reported?

Species Reactivity

Tested: Mouse

Expected from sequence similarity: Human, Mouse, Pig, Cow



EB10807 (0.5 μ g/ml) staining of Mouse Pancreas lysate (35 μ g protein in RIPA buffer). Primary incubation was 1 hour. Detected by chemiluminescence.