



## UK Office

### Everest Biotech Ltd

Cherwell Innovation Centre  
77 Heyford Park  
Upper Heyford  
Oxfordshire  
OX25 5HD  
UK

Enquiries:

[info@everestbiotech.com](mailto:info@everestbiotech.com)

Sales:

[sales@everestbiotech.com](mailto:sales@everestbiotech.com)

Tech support:

[support@everestbiotech.com](mailto:support@everestbiotech.com)

Tel: +44 (0)1869 238326

[www.everestbiotech.com](http://www.everestbiotech.com)

**Research Use Only. Not for  
diagnostic or therapeutic use.**

## EB13081 - Goat Anti-MCAM / CD146/ MUC18 Antibody

Size: 100µg specific antibody in 200µl



### Target Protein

**Principal Names:** MCAM, melanoma cell adhesion molecule, CD146, MUC18;, Gicerin, S-endo 1 endothelial-associated antigen, cell surface glycoprotein MUC18, cell surface glycoprotein P1H12, melanoma adhesion molecule, melanoma-associated antigen A32

**Official Symbol:** MCAM

**Accession Number(s):** NP\_006491.2

**Human GeneID(s):** [4162](#)

### Immunogen

Peptide with sequence C-EPARKEHSGR, from the internal region of the protein sequence according to NP\_006491.2.

Please note the [peptide](#) is available for sale.

### Purification and Storage

Purified from goat serum by ammonium sulphate precipitation followed by antigen affinity chromatography using the immunizing peptide.

Supplied at 0.5 mg/ml in Tris saline, 0.02% sodium azide, pH7.3 with 0.5% bovine serum albumin.

Aliquot and store at -20°C. Minimize freezing and thawing.

### Applications Tested

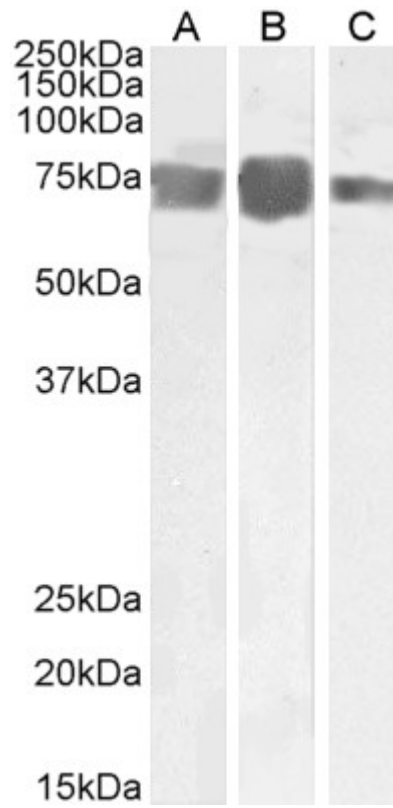
**Peptide ELISA:** antibody detection limit dilution 1:8000.

**Western blot:** Approx 70-75kDa band observed in Human Heart, Placenta and Umbilical Cord lysates (calculated MWt of 71.5kDa according to NP\_006491.2) Recommended concentration: 0.1-0.3µg/ml.

### Species Reactivity

**Tested:** Human

**Expected from sequence similarity:** Human



EB13081 (0.3 $\mu$ g/ml) staining of Human Heart (A), Placenta (B) and Umbilical Cord (C) lysate (35 $\mu$ g protein in RIPA buffer). Primary incubation was 1 hour. Detected by chemiluminescence.