



UK Office

Everest Biotech Ltd

Cherwell Innovation Centre
77 Heyford Park
Upper Heyford
Oxfordshire
OX25 5HD
UK

Enquiries:

info@everestbiotech.com

Sales:

sales@everestbiotech.com

Tech support:

support@everestbiotech.com

Tel: +44 (0)1869 238326

Fax: +44 (0)1869 238327

US Office

Everest Biotech c/o Abcore

405 Maple Street, Suite A106
Ramona,
CA 92065
USA

Inquiries:

info@everestbiotech.com

Sales:

usasales@everestbiotech.com

Tech support:

support@everestbiotech.com

Tel: 888-320-4628 (toll-free)

Fax: 888-841-9041

www.everestbiotech.com

**Research Use Only. Not for
diagnostic or therapeutic use.**

EB06380 - Goat Anti-MCL1 Antibody

Size: 100µg specific antibody in 200µl



Target Protein

Principal Names: MCL1, TM, EAT, MCL1L, MCL1S, MGC1839, MGC104264, myeloid cell leukemia sequence 1 (BCL2-related), induced myeloid leukemia cell differentiation protein Mcl-1, myeloid cell leukemia sequence 1, myeloid cell leukemia sequence 1, isoform 1, BCL2L3, Mcl-1

Official Symbol: MCL1

Accession Number(s): NP_068779.1; NP_001184249.1

Human GeneID(s): [4170](#)

Non-Human GeneID(s): 17210 (mouse)

Important Comments: This antibody is expected to recognise reported isoform 1 (NP_068779.1) and isoform 3 (NP_001184249.1).

Immunogen

Peptide with sequence C-AGVGAGLAYLIR, from the C Terminus of the protein sequence according to NP_068779.1; NP_001184249.1.

Please note the [peptide](#) is available for sale.

Purification and Storage

Purified from goat serum by ammonium sulphate precipitation followed by antigen affinity chromatography using the immunizing peptide.

Supplied at 0.5 mg/ml in Tris saline, 0.02% sodium azide, pH7.3 with 0.5% bovine serum albumin.

Aliquot and store at -20°C. Minimize freezing and thawing.

Applications Tested

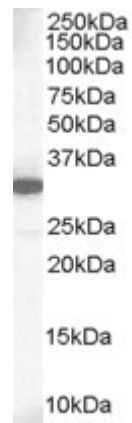
Peptide ELISA: antibody detection limit dilution 1:2000.

Western blot: Approx 35kDa band observed in lysates of Human Lung (calculated MW of 37.3kDa according to NP_068779.1). Recommended concentration: 1-3µg/ml.

Species Reactivity

Tested: Human

Expected from sequence similarity: Human, Mouse, Rat, Dog, Pig, Cow



EB06380 staining (1µg/ml) of Human Lung lysate (RIPA buffer, 35µg total protein per lane). Primary incubated for 1 hour. Detected by chemiluminescence.