



UK Office

Everest Biotech Ltd

Cherwell Innovation Centre
77 Heyford Park
Upper Heyford
Oxfordshire
OX25 5HD
UK

Enquiries:

info@everestbiotech.com

Sales:

sales@everestbiotech.com

Tech support:

support@everestbiotech.com

Tel: +44 (0)1869 238326

www.everestbiotech.com

**Research Use Only. Not for
diagnostic or therapeutic use.**

EB09464 - Goat Anti-MDFI Antibody

Size: 100µg specific antibody in 200µl



Target Protein

Principal Names: MDFI, MyoD family inhibitor, I-MF, I-mfa, OTTHUMP00000016375, OTTHUMP00000196414, inhibitor of MyoD family a

Official Symbol: MDFI

Accession Number(s): NP_005577.1

Human GeneID(s): [4188](#)

Immunogen

Peptide with sequence C-SKSTTSQIPLQAQED, from the internal region of the protein sequence according to NP_005577.1.

Please note the [peptide](#) is available for sale.

Purification and Storage

Purified from goat serum by ammonium sulphate precipitation followed by antigen affinity chromatography using the immunizing peptide.

Supplied at 0.5 mg/ml in Tris saline, 0.02% sodium azide, pH7.3 with 0.5% bovine serum albumin.

Aliquot and store at -20°C. Minimize freezing and thawing.

Applications Tested

Peptide ELISA: antibody detection limit dilution 1:16000.

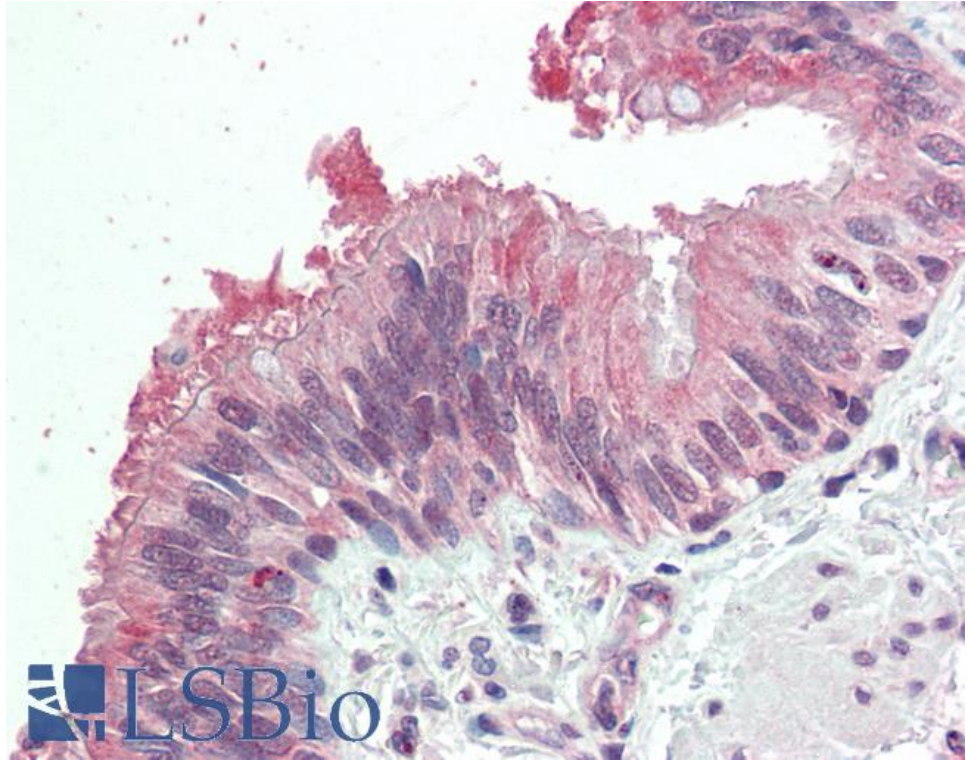
Western blot: Preliminary experiments gave an approx. 70kDa band in lysates of cell line HepG2 after 0.3µg/ml antibody staining. Please note that currently we cannot find an explanation in the literature for the band we observe given the calculated size of 25kDa according to NP_005577.1. The 70kDa band was successfully blocked by incubation with the immunizing peptide.

IHC: Paraffin embedded Human Lung (Bronchus). Recommended concentration: 5µg/ml.

Species Reactivity

Tested: Human

Expected from sequence similarity: Human



EB09464 (5µg/ml) staining of paraffin embedded Human Lung. Steamed antigen retrieval with citrate buffer pH 6, AP-staining.