



## UK Office

### Everest Biotech Ltd

Cherwell Innovation Centre  
77 Heyford Park  
Upper Heyford  
Oxfordshire  
OX25 5HD  
UK

Enquiries:

[info@everestbiotech.com](mailto:info@everestbiotech.com)

Sales:

[sales@everestbiotech.com](mailto:sales@everestbiotech.com)

Tech support:

[support@everestbiotech.com](mailto:support@everestbiotech.com)

Tel: +44 (0)1869 238326

Fax: +44 (0)1869 238327

## US Office

### Everest Biotech c/o Abcore

405 Maple Street, Suite A106  
Ramona,  
CA 92065  
USA

Inquiries:

[info@everestbiotech.com](mailto:info@everestbiotech.com)

Sales:

[usasales@everestbiotech.com](mailto:usasales@everestbiotech.com)

Tech support:

[support@everestbiotech.com](mailto:support@everestbiotech.com)

Tel: 888-320-4628 (toll-free)

Fax: 888-841-9041

[www.everestbiotech.com](http://www.everestbiotech.com)

**Research Use Only. Not for  
diagnostic or therapeutic use.**

## EB06289 - Goat Anti-MDG1 / DNAJB9 Antibody

Size: 100µg specific antibody in 200µl



### Target Protein

**Principal Names:** DNAJB9, MDG1, ERdj4, DKFZP564F1862, DnaJ (Hsp40) homolog, subfamily B, member 9, endoplasmic reticulum DnaJ homolog 4, microvascular endothelial differentiation gene 1, MST049, MSTP049

**Official Symbol:** DNAJB9

**Accession Number(s):** NP\_036460.1

**Human GeneID(s):** [4189](#)

**Non-Human GeneID(s):** 27362 (mouse), 24908 (rat)

### Immunogen

Peptide with sequence RGNMVTITYTDCSGQ, from the C Terminus of the protein sequence according to NP\_036460.1.

Please note the [peptide](#) is available for sale.

### Purification and Storage

Purified from goat serum by ammonium sulphate precipitation followed by antigen affinity chromatography using the immunizing peptide.

Supplied at 0.5 mg/ml in Tris saline, 0.02% sodium azide, pH7.3 with 0.5% bovine serum albumin.

Aliquot and store at -20°C. Minimize freezing and thawing.

### Applications Tested

**Peptide ELISA:** antibody detection limit dilution 1:4000.

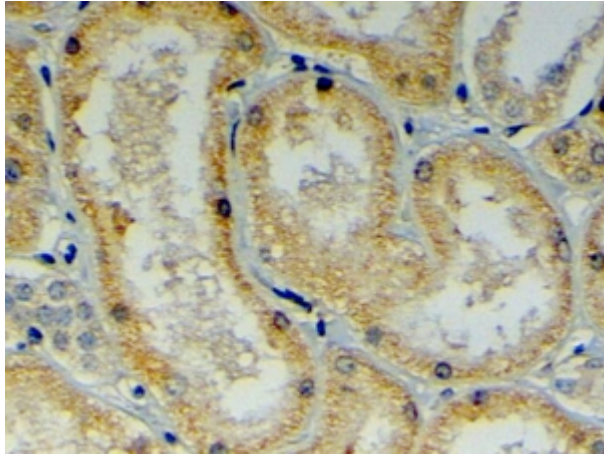
**Western blot:** Preliminary experiments gave no signal but low background in A459 and Human Skeletal Muscle extracts at up to 1µg/ml.

**IHC:** In paraffin embedded Human Kidney shows ER staining in PCT. Recommended concentration: 4-6µg/ml.

### Species Reactivity

**Tested:** Human

**Expected from sequence similarity:** Human, Mouse, Rat, Dog, Cow



EB06289 (4µg/ml) staining of paraffin embedded Human Kidney. Steamed antigen retrieval with citrate buffer pH 6, HRP-staining.