



UK Office

Everest Biotech Ltd

Cherwell Innovation Centre
77 Heyford Park
Upper Heyford
Oxfordshire
OX25 5HD
UK

Enquiries:

info@everestbiotech.com

Sales:

sales@everestbiotech.com

Tech support:

support@everestbiotech.com

Tel: +44 (0)1869 238326

Fax: +44 (0)1869 238327

US Office

Everest Biotech c/o Abcore

405 Maple Street, Suite A106
Ramona,
CA 92065
USA

Inquiries:

info@everestbiotech.com

Sales:

usasales@everestbiotech.com

Tech support:

support@everestbiotech.com

Tel: 888-320-4628 (toll-free)

Fax: 888-841-9041

www.everestbiotech.com

**Research Use Only. Not for
diagnostic or therapeutic use.**

EB11995 - Goat Anti-MDH1 / MOR2 (aa211-223) Antibody

Size: 100µg specific antibody in 200µl



Target Protein

Principal Names: MDH1, malate dehydrogenase 1, NAD (soluble), MDH-s, MDHA, MGC:1375, MOR2, cytosolic malate dehydrogenase, malate dehydrogenase, cytoplasmic, soluble malate dehydrogenase

Official Symbol: MDH1

Accession Number(s): NP_001186040.1; NP_005908.1; NP_001186041.1

Human GeneID(s): [4190](#)

Non-Human GeneID(s): 17449 (mouse), 24551 (rat)

Important Comments: This antibody is expected to recognize all reported isoforms (NP_001186040.1; NP_005908.1; NP_001186041.1).

Immunogen

Peptide with sequence C-PDVNHAKVKLQGK, from the internal region of the protein sequence according to NP_001186040.1; NP_005908.1; NP_001186041.1.

Please note the [peptide](#) is available for sale.

Purification and Storage

Purified from goat serum by ammonium sulphate precipitation followed by antigen affinity chromatography using the immunizing peptide.

Supplied at 0.5 mg/ml in Tris saline, 0.02% sodium azide, pH7.3 with 0.5% bovine serum albumin.

Aliquot and store at -20°C. Minimize freezing and thawing.

Applications Tested

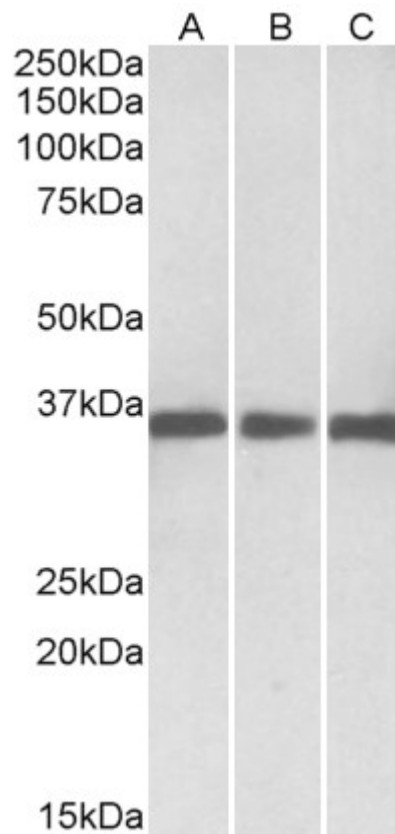
Peptide ELISA: antibody detection limit dilution 1:16000.

Western blot: Approx 35kDa band observed in Human Mouse, Rat and Pig Heart lysates (calculated MW of 36.4kDa according to NP_005908.1). Recommended concentration: 0.03-0.1µg/ml.

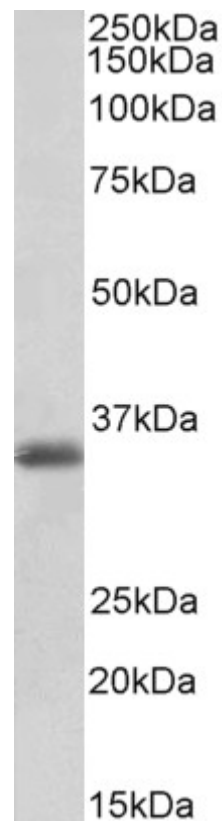
Species Reactivity

Tested: Human, Mouse, Rat, Pig

Expected from sequence similarity: Human, Mouse, Rat, Cow



EB11995 (0.03 μ g/ml) staining of Human (A), Mouse(B) and Rat (C) Heart lysates (35 μ g protein in RIPA buffer). Primary incubation was 1 hour. Detected by chemiluminescence.



EB11995 (0.1 μ g/ml) staining of Pig Heart lysates (35 μ g protein in RIPA buffer). Primary incubation was 1 hour. Detected by chemiluminescence.