

UK Office

Everest Biotech Ltd

Cherwell Innovation Centre
77 Heyford Park
Upper Heyford
Oxfordshire
OX25 5HD
UK

Enquiries:

info@everestbiotech.com

Sales:

sales@everestbiotech.com

Tech support:

support@everestbiotech.com

Tel: +44 (0)1869 238326

www.everestbiotech.com

**Research Use Only. Not for
diagnostic or therapeutic use.**

EB11994 - Goat Anti-MDH1 / MOR2 Antibody

Size: 100µg specific antibody in 200µl



Target Protein

Principal Names: MDH1, malate dehydrogenase 1, NAD (soluble), MDH-s, MDHA, MGC:1375, MOR2, cytosolic malate dehydrogenase, malate dehydrogenase, cytoplasmic, soluble malate dehydrogenase

Official Symbol: MDH1

Accession Number(s): NP_001186040.1; NP_005908.1; NP_001186041.1

Human GeneID(s): [4190](#)

Non-Human GeneID(s): 17449 (mouse), 24551 (rat)

Important Comments: This antibody is expected to recognize all reported isoforms (NP_001186040.1; NP_005908.1; NP_001186041.1).

Immunogen

Peptide with sequence TNCLTASKSAPSIPK, from the internal region of the protein sequence according to NP_001186040.1; NP_005908.1; NP_001186041.1.

Please note the [peptide](#) is available for sale.

Purification and Storage

Purified from goat serum by ammonium sulphate precipitation followed by antigen affinity chromatography using the immunizing peptide.

Supplied at 0.5 mg/ml in Tris saline, 0.02% sodium azide, pH7.3 with 0.5% bovine serum albumin.

Aliquot and store at -20°C. Minimize freezing and thawing.

Applications Tested

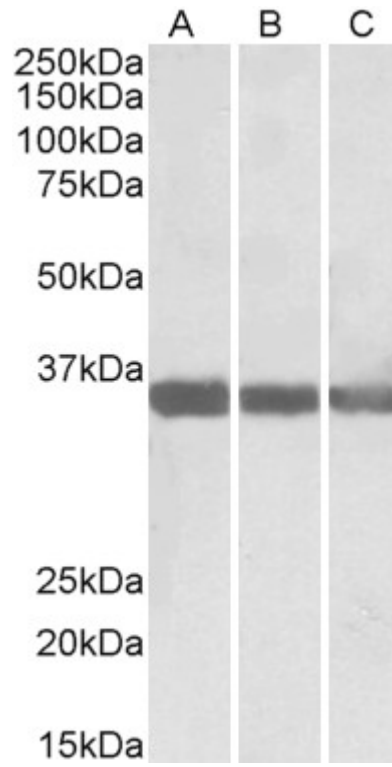
Peptide ELISA: antibody detection limit dilution 1:128000.

Western blot: Approx 36kDa band observed in Human, Mouse, Rat and Pig Heart lysates (calculated MW of 36.4kDa according to NP_005908.1). Recommended concentration: 0.01-0.03µg/ml.

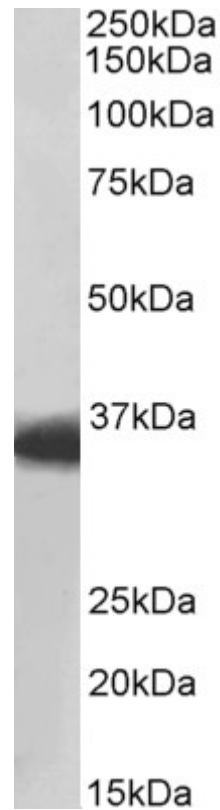
Species Reactivity

Tested: Human, Mouse, Rat, Pig

Expected from sequence similarity: Human, Mouse, Rat, Dog, Pig, Cow



EB11994 (0.01 μ g/ml) staining of Human (A), Mouse (B) and Rat (C) Heart lysate (35 μ g protein in RIPA buffer). Primary incubation was 1 hour. Detected by chemiluminescence.



EB11994 (0.01 μ g/ml) staining of Pig Heart lysate (35 μ g protein in RIPA buffer). Primary incubation was 1 hour. Detected by chemiluminescence.