



UK Office

Everest Biotech Ltd

Cherwell Innovation Centre
77 Heyford Park
Upper Heyford
Oxfordshire
OX25 5HD
UK

Enquiries:

info@everestbiotech.com

Sales:

sales@everestbiotech.com

Tech support:

support@everestbiotech.com

Tel: +44 (0)1869 238326

Fax: +44 (0)1869 238327

US Office

Everest Biotech c/o Abcore

405 Maple Street, Suite A106
Ramona,
CA 92065
USA

Inquiries:

info@everestbiotech.com

Sales:

usasales@everestbiotech.com

Tech support:

support@everestbiotech.com

Tel: 888-320-4628 (toll-free)

Fax: 888-841-9041

www.everestbiotech.com

**Research Use Only. Not for
diagnostic or therapeutic use.**

EB13028 - Goat Anti-MDH2 (aa221-232) Antibody

Size: 100µg specific antibody in 200µl



Target Protein

Principal Names: MDH2, malate dehydrogenase 2, NAD (mitochondrial), M-MDH, MDH, MGC:3559, MOR1, malate dehydrogenase, mitochondrial

Official Symbol: MDH2

Accession Number(s): NP_005909.2

Human GeneID(s): [4191](#)

Immunogen

Peptide with sequence C-DQLTALTGRIQE, from the internal region of the protein sequence according to NP_005909.2.

Please note the [peptide](#) is available for sale.

Purification and Storage

Purified from goat serum by ammonium sulphate precipitation followed by antigen affinity chromatography using the immunizing peptide.

Supplied at 0.5 mg/ml in Tris saline, 0.02% sodium azide, pH7.3 with 0.5% bovine serum albumin.

Aliquot and store at -20°C. Minimize freezing and thawing.

Applications Tested

Peptide ELISA: antibody detection limit dilution 1:16000.

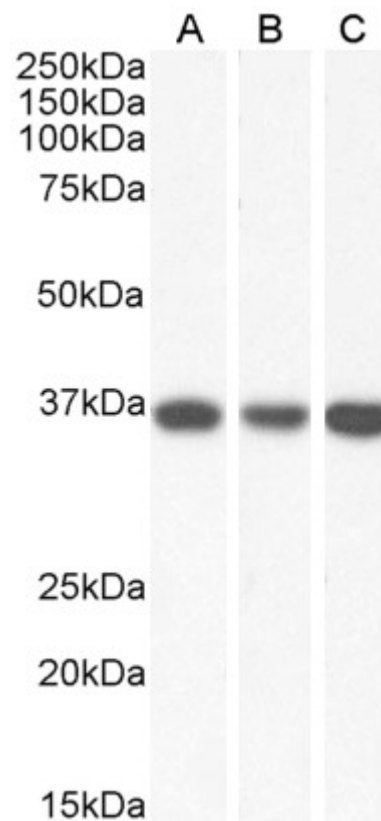
Western blot: Approx 36-37kDa band observed in lysates of cell lines HeLa, HepG2 and K562, and approx 35kDa band observed in Human Heart and Liver lysates (calculated MW of 35.5kDa according to NP_005909.2). Recommended concentration: 0.01-0.03µg/ml.

IHC: Paraffin embedded Human Prostate. Recommended concentration: 5µg/ml.

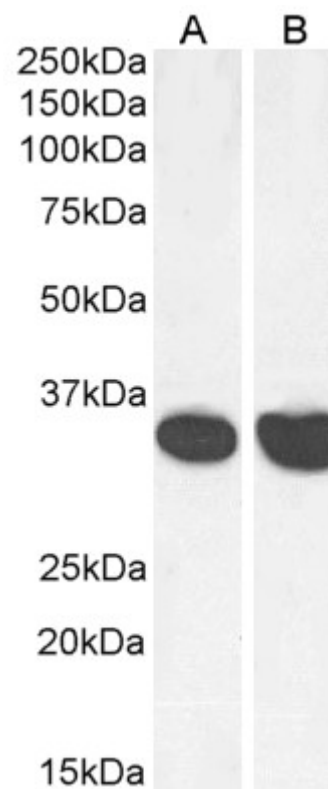
Species Reactivity

Tested: Human

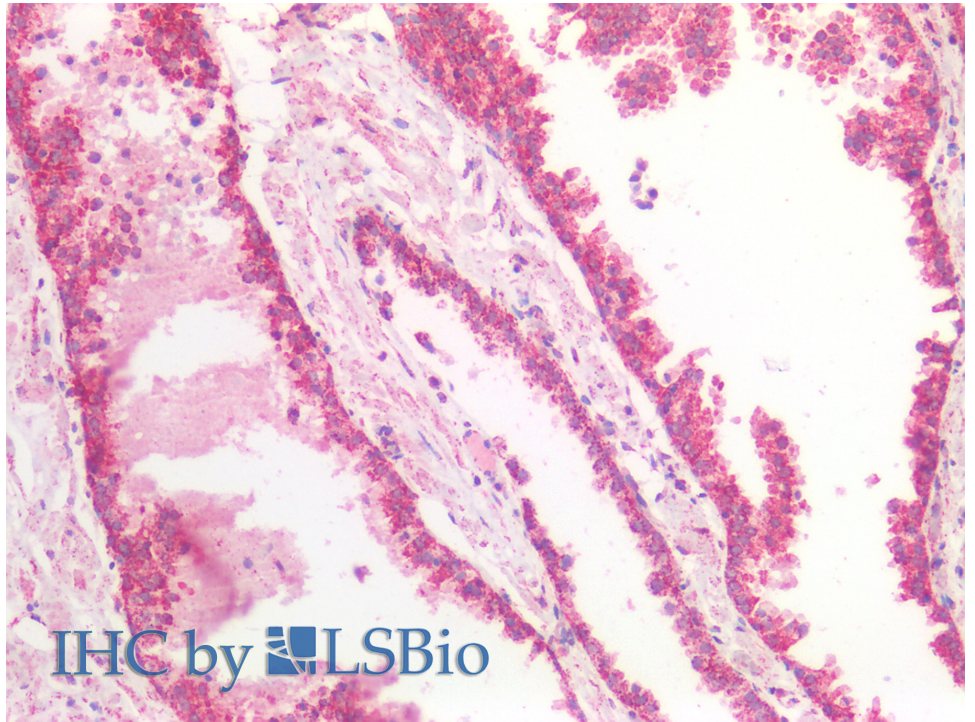
Expected from sequence similarity: Human



EB13028 (0.03 μ g/ml) staining of HeLa (A), HepG2 (B) and K562 (C) lysate (35 μ g protein in RIPA buffer). Primary incubation was 1 hour. Detected by chemiluminescence.



EB13028 (0.03 μ g/ml) staining of Human Heart (A) and Liver (B) lysate (35 μ g protein in RIPA buffer). Primary incubation was 1 hour. Detected by chemiluminescence.



EB13028 (5µg/ml) staining of paraffin embedded Human Prostate. Steamed antigen retrieval with citrate buffer pH 6, AP-staining.