



UK Office

Everest Biotech Ltd

Cherwell Innovation Centre
77 Heyford Park
Upper Heyford
Oxfordshire
OX25 5HD
UK

Enquiries:

info@everestbiotech.com

Sales:

sales@everestbiotech.com

Tech support:

support@everestbiotech.com

Tel: +44 (0)1869 238326

www.everestbiotech.com

**Research Use Only. Not for
diagnostic or therapeutic use.**

EB13027 - Goat Anti-MDH2 Antibody

Size: 100µg specific antibody in 200µl



Target Protein

Principal Names: MDH2, malate dehydrogenase 2, NAD (mitochondrial), M-MDH, MDH, MGC:3559, MOR1, malate dehydrogenase, mitochondrial

Official Symbol: MDH2

Accession Number(s): NP_005909.2

Human GeneID(s): [4191](#)

Non-Human GeneID(s): 17448 (mouse), 81829 (rat)

Immunogen

Peptide with sequence C-TRDDLNTNAT, from the internal region of the protein sequence according to NP_005909.2.

Please note the [peptide](#) is available for sale.

Purification and Storage

Purified from goat serum by ammonium sulphate precipitation followed by antigen affinity chromatography using the immunizing peptide.

Supplied at 0.5 mg/ml in Tris saline, 0.02% sodium azide, pH7.3 with 0.5% bovine serum albumin.

Aliquot and store at -20°C. Minimize freezing and thawing.

Applications Tested

Peptide ELISA: antibody detection limit dilution 1:8000.

Western blot: Approx 35kDa band observed in lysates of cell lines HeLa, HepG2 and NIH3T3 (calculated MW of 35.5kDa according to Human NP_005909.2 and 35.6kDa according to Mouse NP_032643.2). Recommended concentration: 0.1-0.3µg/ml. Primary incubation was 1 hour. Approx 35kDa band observed in Human, Mouse, Rat and Pig Heart lysates (calculated MW of 35.5kDa according to Human NP_005909.2 and 35.6kDa according to Mouse NP_032643.2, Rat NP_112413.2 and Pig NP_001231082.1). Recommended concentration: 0.01-0.03µg/ml. Primary incubation was 1 hour. This antibody has been successfully used in WB on Human, PMID: 38609156.

IHC: Paraffin embedded Human Skeletal Muscle. Recommended concentration: 5µg/ml.

Species Reactivity

Tested: Human, Mouse, Rat, Pig

Expected from sequence similarity: Human, Mouse, Rat, Pig, Cow

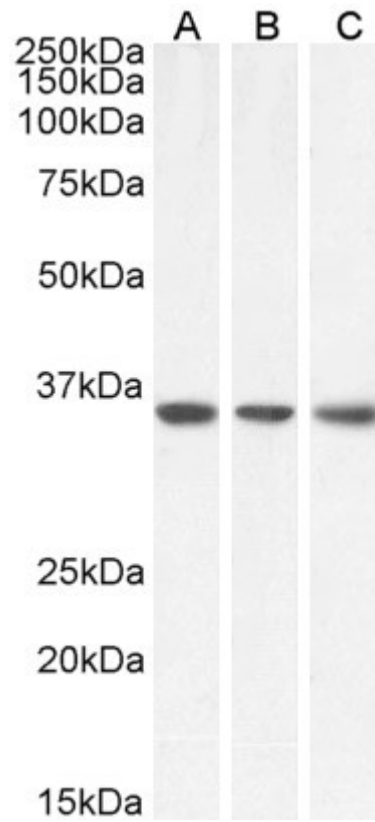
Specific Reference

This antibody has been successfully used in WB on Human:

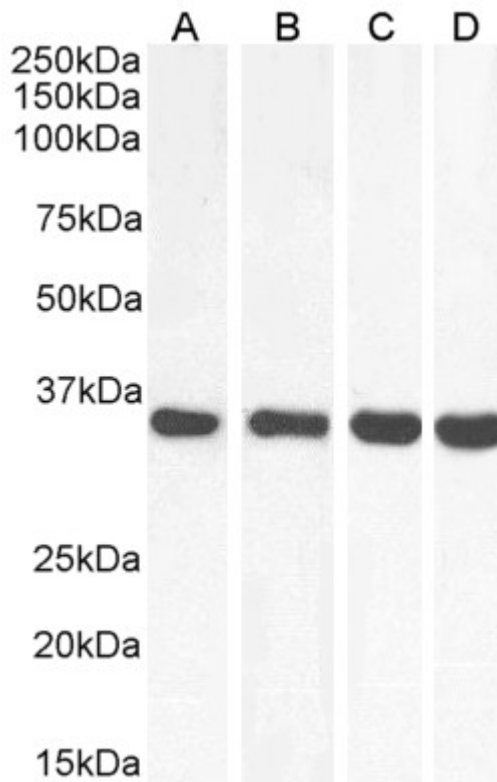
Michelle Noble, Aindrila Chatterjee, Thileepan Sekaran, Thomas Schwarzl, Matthias W Hentze

Cytosolic RNA binding of the mitochondrial TCA cycle enzyme malate dehydrogenase. RNA. 2024 Jun 17;30(7):839-853.

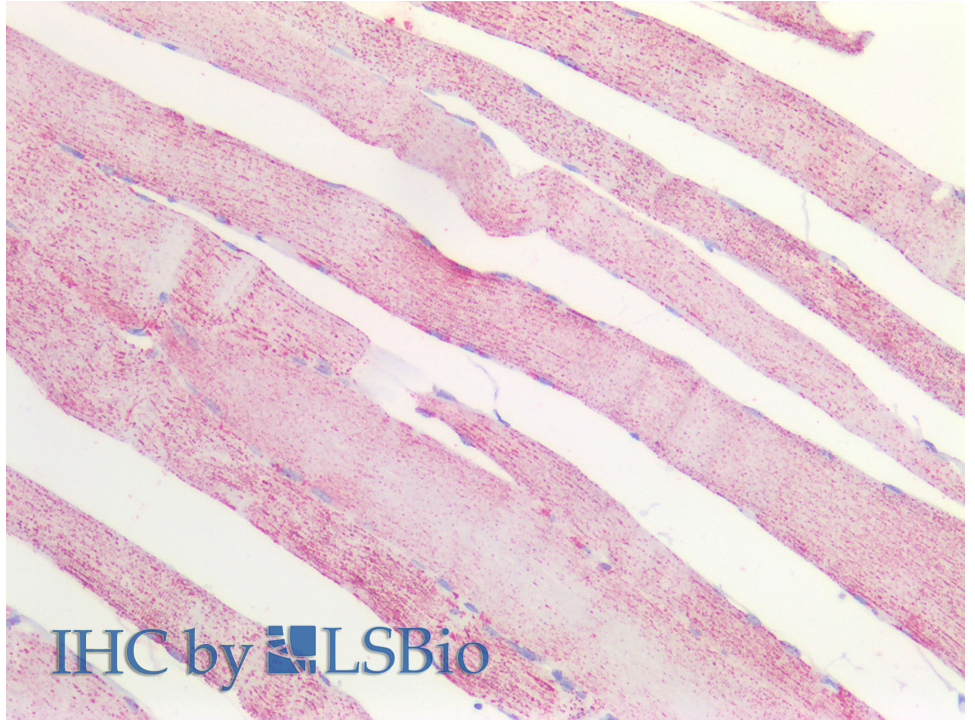
PMID: 38609156



EB13027 (0.1µg/ml) staining of HeLa (A), HepG2 (B) and NIH3T3 (C) lysate (35µg protein in RIPA buffer). Detected by chemiluminescence.



EB13027 (0.01µg/ml) staining of Human (A), Mouse (B), Rat (C) and Pig (D) Heart lysate (35µg protein in RIPA buffer). Detected by chemiluminescence.



EB13027 (5µg/ml) staining of paraffin embedded Human Skeletal Muscle. Steamed antigen retrieval with citrate buffer pH 6, AP-staining.