



UK Office

Everest Biotech Ltd

Cherwell Innovation Centre
77 Heyford Park
Upper Heyford
Oxfordshire
OX25 5HD
UK

Enquiries:

info@everestbiotech.com

Sales:

sales@everestbiotech.com

Tech support:

support@everestbiotech.com

Tel: +44 (0)1869 238326

Fax: +44 (0)1869 238327

US Office

Everest Biotech c/o Abcore

405 Maple Street, Suite A106
Ramona,
CA 92065
USA

Inquiries:

info@everestbiotech.com

Sales:

usasales@everestbiotech.com

Tech support:

support@everestbiotech.com

Tel: 888-320-4628 (toll-free)

Fax: 888-841-9041

www.everestbiotech.com

**Research Use Only. Not for
diagnostic or therapeutic use.**

EB06990 - Goat Anti-MDM2 (isoform) Antibody

Size: 100µg specific antibody in 200µl



Target Protein

Principal Names: MDM2, Mdm2, transformed 3T3 cell double minute 2, p53 binding protein (mouse), HGNC:6973, MGC71221, hdm2, mouse double minute 2 homolog, mouse double minute 2, human homolog of, p53-binding protein, p53-binding protein MDM2, ubiquitin-protein ligase E3 Mdm2, Mdm2 p53 binding protein homolog (mouse), HDMX, MGC5370, Mdm2, transformed 3T3 cell double minute 2, p53 binding protein, OTTHUMP00000183495, double minute 2, human homolog of

Official Symbol: MDM2

Accession Number(s): NP_002383.2

Human GeneID(s): [4193](#)

Important Comments: This antibody is expected to recognize isoform MDM2 (NP_002383.2) only.

Immunogen

Peptide with sequence C-DELSGERQKRHKSD, from the internal region of the protein sequence according to NP_002383.2.

Please note the [peptide](#) is available for sale.

Purification and Storage

Purified from goat serum by ammonium sulphate precipitation followed by antigen affinity chromatography using the immunizing peptide.

Supplied at 0.5 mg/ml in Tris saline, 0.02% sodium azide, pH7.3 with 0.5% bovine serum albumin.

Aliquot and store at -20°C. Minimize freezing and thawing.

Applications Tested

Peptide ELISA: antibody detection limit dilution 1:64000.

Western blot: Approx 55kDa band observed in Human Liver lysates (calculated MW of 56.0kDa according to NP_002383.2). In transfected HEK293 transiently expressing MDM2 bands of approx. 48kDa, 60kDa, 70kDa and 90kDa are observed. These bands are not observed in the non-transfected HEK293. The 80kDa band is endogenously expressed in the negative control. Recommended concentration: 0.3-1.0µg/ml.

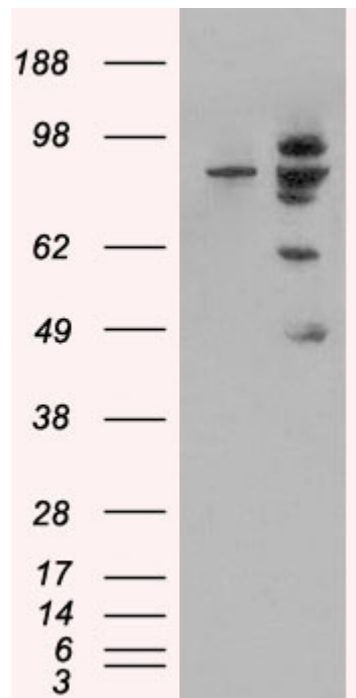
Species Reactivity

Tested: Human

Expected from sequence similarity: Human, Rat, Cat, Dog, Pig, Cow



EB06990 (0.3µg/ml) staining of Human Liver lysate (35µg protein in RIPA buffer). Primary incubation was 1 hour.
Detected by chemiluminescence.



HEK293 overexpressing MDM2 (RC219518) and probed with EB06990 (mock transfection in first lane), tested
by Origene.