



UK Office

Everest Biotech Ltd

Cherwell Innovation Centre
77 Heyford Park
Upper Heyford
Oxfordshire
OX25 5HD
UK

Enquiries:

info@everestbiotech.com

Sales:

sales@everestbiotech.com

Tech support:

support@everestbiotech.com

Tel: +44 (0)1869 238326

Fax: +44 (0)1869 238327

US Office

Everest Biotech c/o Abcore

405 Maple Street, Suite A106
Ramona,
CA 92065
USA

Inquiries:

info@everestbiotech.com

Sales:

usasales@everestbiotech.com

Tech support:

support@everestbiotech.com

Tel: 888-320-4628 (toll-free)

Fax: 888-841-9041

www.everestbiotech.com

**Research Use Only. Not for
diagnostic or therapeutic use.**

EB09446 - Goat Anti-MECL1 Antibody

Size: 100µg specific antibody in 200µl



Target Protein

Principal Names: PSMB10, proteasome (prosome, macropain) subunit, beta type, 10, LMP10, MECL1, MGC1665, beta2i, macropain subunit MECL-1, multicatalytic endopeptidase complex subunit MECL-1, proteasome MECL-1, proteasome beta 10 subunit, proteasome catalytic subunit 2i, proteasome subunit MECL1, proteasome subunit beta 7i

Official Symbol: PSMB10

Accession Number(s): NP_002792.1

Human GeneID(s): [5699](#)

Non-Human GeneID(s): 19171 (mouse), 291983 (rat)

Immunogen

Peptide with sequence C-PTEPVKRSGRYH, from the internal region of the protein sequence according to NP_002792.1.

Please note the [peptide](#) is available for sale.

Purification and Storage

Purified from goat serum by ammonium sulphate precipitation followed by antigen affinity chromatography using the immunizing peptide.

Supplied at 0.5 mg/ml in Tris saline, 0.02% sodium azide, pH7.3 with 0.5% bovine serum albumin.

Aliquot and store at -20°C. Minimize freezing and thawing.

Applications Tested

Peptide ELISA: antibody detection limit dilution 1:8000.

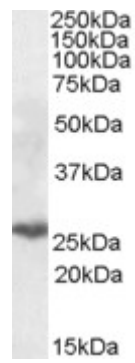
Western blot: Approx 26kDa band observed in Human, Liver, Lung and Lymph Node lysates (calculated MW of 28.9kDa according to NP_002792.1). Recommended concentration: 0.3-1µg/ml.

IHC: Paraffin embedded Human Tonsil and Small Intestine. Recommended concentration: 5µg/ml.

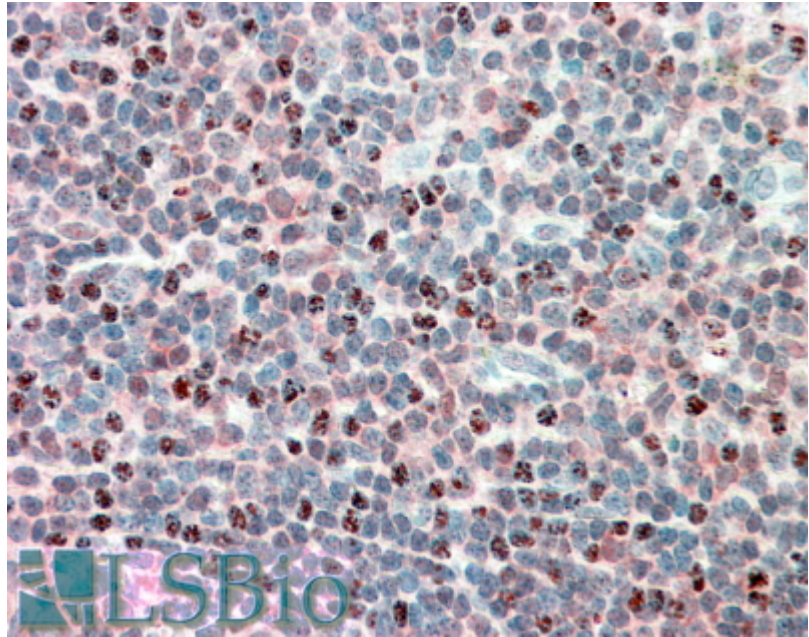
Species Reactivity

Tested: Human

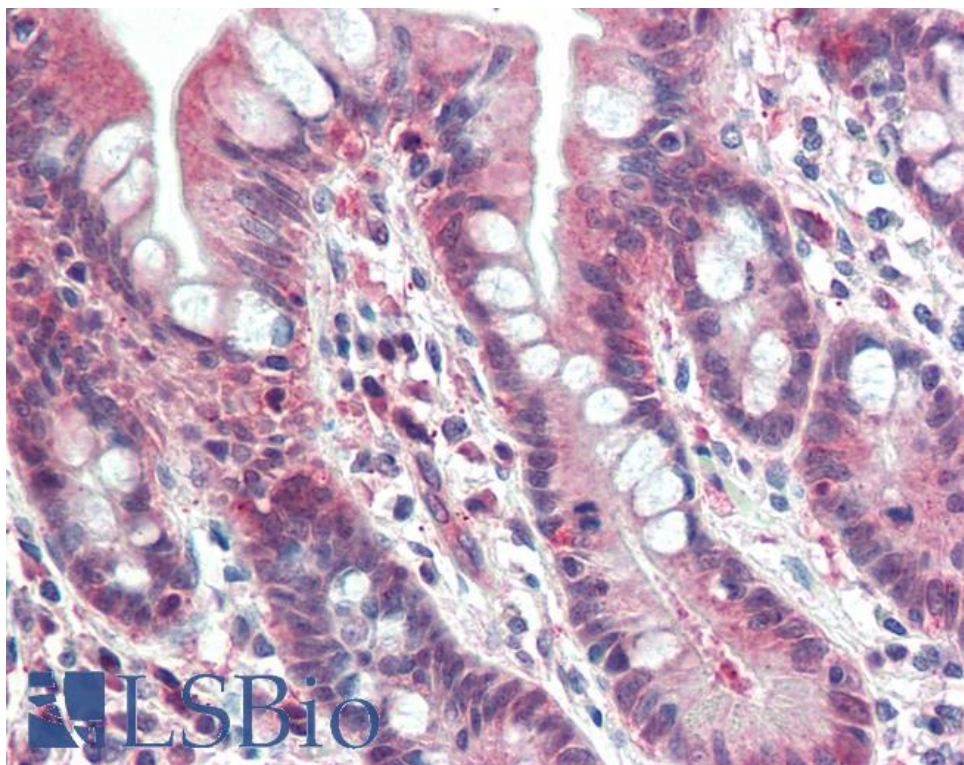
Expected from sequence similarity: Human



EB09446 (0.3µg/ml) staining of Human Lung lysate (35µg protein in RIPA buffer). Primary incubation was 1 hour. Detected by chemiluminescence.



EB09446 (5µg/ml) staining of paraffin embedded Human Tonsil. Steamed antigen retrieval with citrate buffer pH 6, AP-staining.



EB09446 (5µg/ml) staining of paraffin embedded Human Small Intestine. Steamed antigen retrieval with citrate buffer pH 6, AP-staining.