



## UK Office

### Everest Biotech Ltd

Cherwell Innovation Centre  
77 Heyford Park  
Upper Heyford  
Oxfordshire  
OX25 5HD  
UK

Enquiries:

[info@everestbiotech.com](mailto:info@everestbiotech.com)

Sales:

[sales@everestbiotech.com](mailto:sales@everestbiotech.com)

Tech support:

[support@everestbiotech.com](mailto:support@everestbiotech.com)

Tel: +44 (0)1869 238326

[www.everestbiotech.com](http://www.everestbiotech.com)

**Research Use Only. Not for  
diagnostic or therapeutic use.**

## EB08209 - Goat Anti-MERTK Antibody

Size: 100µg specific antibody in 200µl



### Target Protein

**Principal Names:** MERTK, c-mer proto-oncogene tyrosine kinase, MER, MGC133349, c-mer, MER receptor tyrosine kinase, STK kinase

**Official Symbol:** MERTK

**Accession Number(s):** NP\_006334.2

**Human GeneID(s):** [10461](#)

### Immunogen

Peptide with sequence C-EVHDSKPHEGRY, from the internal region of the protein sequence according to NP\_006334.2.

Please note the [peptide](#) is available for sale.

### Purification and Storage

Purified from goat serum by ammonium sulphate precipitation followed by antigen affinity chromatography using the immunizing peptide.

Supplied at 0.5 mg/ml in Tris saline, 0.02% sodium azide, pH7.3 with 0.5% bovine serum albumin.

Aliquot and store at -20°C. Minimize freezing and thawing.

### Applications Tested

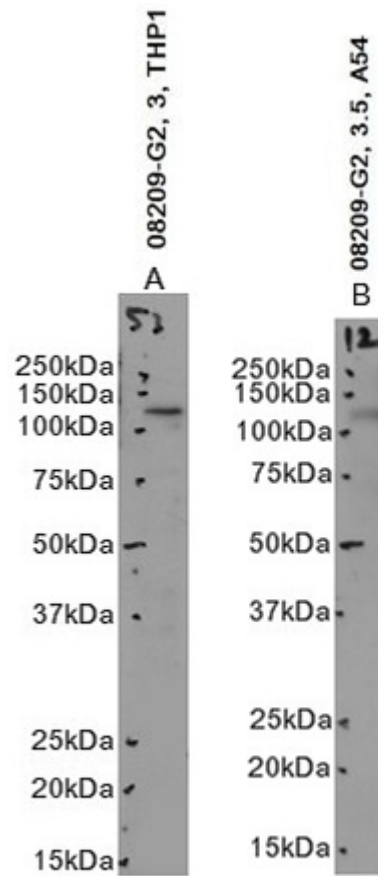
**Peptide ELISA:** antibody detection limit dilution 1:16000.

**Western blot:** Approx. 125kDa band observed in lysates of cell lines THP-1 and A549 (calculated MW of 110.0kDa according to NP\_006334.2). A 110kDa band was alternatively observed in some lysates. Recommended concentration: 2.5-3.5µg/ml. Primary incubation 1 hour at room temperature.

### Species Reactivity

**Tested:** Human

**Expected from sequence similarity:** Human



EB08209 optimised QC. Primary incubation 1 hour at room temperature.  
 Image A: THP-1 cell lysate at primary Ab concentration 3µg/ml. Image B: A549 cell lysate at primary Ab concentration 3.5µg/ml. (Loaded 35µg protein in RIPA buffer, per lane).  
 Detected by chemiluminescence.