



UK Office

Everest Biotech Ltd

Cherwell Innovation Centre
77 Heyford Park
Upper Heyford
Oxfordshire
OX25 5HD
UK

Enquiries:

info@everestbiotech.com

Sales:

sales@everestbiotech.com

Tech support:

support@everestbiotech.com

Tel: +44 (0)1869 238326

www.everestbiotech.com

**Research Use Only. Not for
diagnostic or therapeutic use.**

EB11934 - Goat Anti-MIA / CD-RAP Antibody

Size: 100µg specific antibody in 200µl



Target Protein

Principal Names: MIA, melanoma inhibitory activity, CD-RAP, melanoma-derived growth regulatory protein

Official Symbol: MIA

Accession Number(s): NP_006524.1

Human GeneID(s): [8190](#)

Important Comments: The immunizing peptide represents the N terminus of the mature protein. Reported variants represent identical protein: NP_006524.1, NP_001189482.1,

Immunogen

Peptide with sequence PKLADRKLCADQE, from the internal region of the protein sequence according to NP_006524.1.

Please note the [peptide](#) is available for sale.

Purification and Storage

Purified from goat serum by ammonium sulphate precipitation followed by antigen affinity chromatography using the immunizing peptide.

Supplied at 0.5 mg/ml in Tris saline, 0.02% sodium azide, pH7.3 with 0.5% bovine serum albumin.

Aliquot and store at -20°C. Minimize freezing and thawing.

Applications Tested

Peptide ELISA: antibody detection limit dilution 1:64000.

Western blot: Approx 14kDa band observed in Human Glioma lysates (calculated MW of 14.5kDa according to NP_006524.1). Recommended concentration: 1-3µg/ml. Primary incubation was 1 hour.

IHC: Paraffin embedded Human Spleen and Skeletal Muscle. Recommended concentration: 5µg/ml.

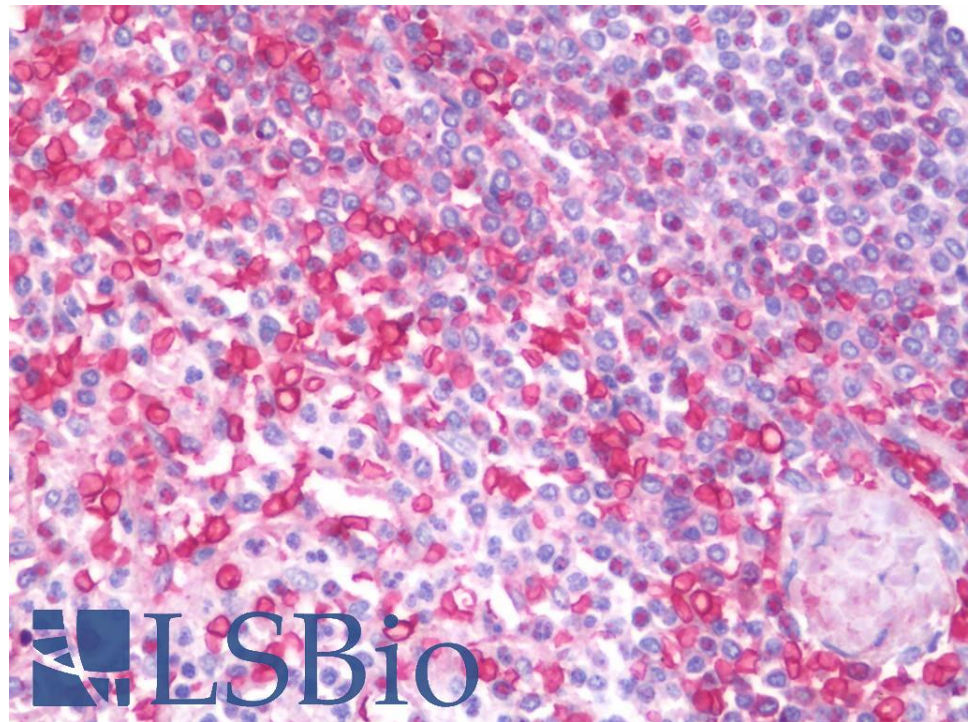
Species Reactivity

Tested: Human

Expected from sequence similarity: Human



EB11934 (1µg/ml) staining of Human Glioma lysate (35µg protein in RIPA buffer). Detected by chemiluminescence.



EB11934 (5µg/ml) staining of paraffin embedded Human Spleen. Steamed antigen retrieval with citrate buffer pH 6, AP-staining.



EB11934 (5µg/ml) staining of paraffin embedded Human Skeletal Muscle. Steamed antigen retrieval with citrate buffer pH 6, AP-staining.