

## UK Office

### Everest Biotech Ltd

Cherwell Innovation Centre  
77 Heyford Park  
Upper Heyford  
Oxfordshire  
OX25 5HD  
UK

Enquiries:

[info@everestbiotech.com](mailto:info@everestbiotech.com)

Sales:

[sales@everestbiotech.com](mailto:sales@everestbiotech.com)

Tech support:

[support@everestbiotech.com](mailto:support@everestbiotech.com)

Tel: +44 (0)1869 238326

[www.everestbiotech.com](http://www.everestbiotech.com)

**Research Use Only. Not for  
diagnostic or therapeutic use.**

## EB07790 - Goat Anti-MIC1 / C18orf8 Antibody

Size: 100µg specific antibody in 200µl



### Target Protein

**Principal Names:** C18orf8, chromosome 18 open reading frame 8, FLJ23453, HsT2591, MIC1, colon cancer associated protein Mic1, colon cancer-associated protein Mic1

**Official Symbol:** C18orf8

**Accession Number(s):** NP\_037458.3

**Human GeneID(s):** [29919](#)

**Non-Human GeneID(s):** 76482 (mouse), 291784 (rat)

### Immunogen

Peptide with sequence C-DKLNHEYKKYLDAEQ, from the internal region of the protein sequence according to NP\_037458.3.

Please note the [peptide](#) is available for sale.

### Purification and Storage

Purified from goat serum by ammonium sulphate precipitation followed by antigen affinity chromatography using the immunizing peptide.

Supplied at 0.5 mg/ml in Tris saline, 0.02% sodium azide, pH7.3 with 0.5% bovine serum albumin.

Aliquot and store at -20°C. Minimize freezing and thawing.

### Applications Tested

**Peptide ELISA:** antibody detection limit dilution 1:32000.

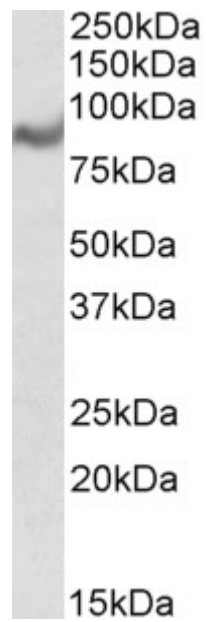
**Western blot:** Approx 80kDa band observed in Human Breast lysates (calculated MW of 75.0kDa according to NP\_037458.3). Recommended concentration: 1-3µg/ml.

**IHC:** In paraffin embedded Small Intestine shows textured cytoplasm staining in of the enterocytes. Recommended concentration, 5-2=10µg/ml.

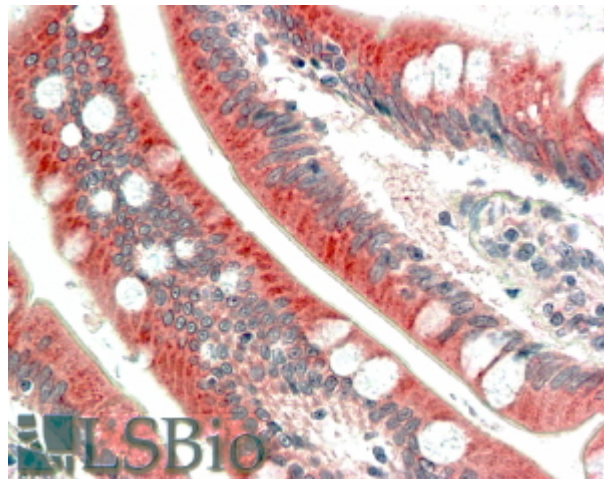
### Species Reactivity

**Tested:** Human

**Expected from sequence similarity:** Human, Mouse, Rat, Dog



EB07790 (1 $\mu$ g/ml) staining of Human Breast lysate (35 $\mu$ g protein in RIPA buffer). Primary incubation was 1 hour. Detected by chemiluminescence.



EB07790 (5 $\mu$ g/ml) staining of paraffin embedded Human Small Intestine. Steamed antigen retrieval with citrate buffer pH 6, AP-staining.