



## UK Office

### Everest Biotech Ltd

Cherwell Innovation Centre  
77 Heyford Park  
Upper Heyford  
Oxfordshire  
OX25 5HD  
UK

Enquiries:

[info@everestbiotech.com](mailto:info@everestbiotech.com)

Sales:

[sales@everestbiotech.com](mailto:sales@everestbiotech.com)

Tech support:

[support@everestbiotech.com](mailto:support@everestbiotech.com)

Tel: +44 (0)1869 238326

[www.everestbiotech.com](http://www.everestbiotech.com)

**Research Use Only. Not for  
diagnostic or therapeutic use.**

## EB10281 - Goat Anti-MIG12 Antibody

Size: 100µg specific antibody in 200µl



### Target Protein

**Principal Names:** FLJ10386, G12-like, MID1 interacting G12-like protein, MID1 interacting protein 1 (gastrulation specific G12 homolog (zebrafish)), MID1 interacting protein 1 (gastrulation specific G12-like), MIG12, STRAIT11499, THRSPL, MID1IP1

**Official Symbol:** MID1IP1

**Accession Number(s):** NP\_067065.1

**Human GeneID(s):** [58526](#)

**Non-Human GeneID(s):** 68041 (mouse), 404280 (rat)

**Important Comments:** Reported variants represent identical protein: NP\_001092261.1, NP\_067065.1, NP\_001092260.1

### Immunogen

Peptide with sequence C-HTVLSKLTRK, from the internal region of the protein sequence according to NP\_067065.1.

Please note the [peptide](#) is available for sale.

### Purification and Storage

Purified from goat serum by ammonium sulphate precipitation followed by antigen affinity chromatography using the immunizing peptide.

Supplied at 0.5 mg/ml in Tris saline, 0.02% sodium azide, pH7.3 with 0.5% bovine serum albumin.

Aliquot and store at -20°C. Minimize freezing and thawing.

### Applications Tested

**Peptide ELISA:** antibody detection limit dilution 1:8000.

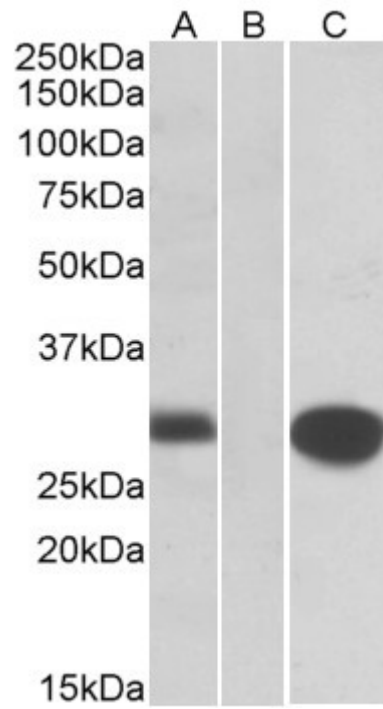
**Western blot:** In transfected HEK293 transiently expressing full-length Human MID1IP1 (myc and DYKDDDDK tagged), a band of approx. 28kDa was observed. No bands were observed in mock-transfected HEK293 and the same band was observed using anti-myc tag antibody. Recommended concentration, 0.2-1µg/ml.

Purchase the +ve control! The transfected lysate used to QC this product is available for sale. Please email [sales@everestbiotech.com](mailto:sales@everestbiotech.com) to request datasheet, pricing and delivery information.

### Species Reactivity

**Tested:** Human

**Expected from sequence similarity:** Human, Mouse, Rat, Dog, Cow



HEK293 lysate (10ug protein in RIPA buffer) overexpressing Human MID1IP1 with C-terminal MYC tag probed with EB10281 (1ug/ml) in Lane A and probed with anti-MYC Tag (1/1000) in lane C. Mock-transfected HEK293 probed with EB10281 (1mg/ml) in Lane B. Primary incubations were for 1 hour. Detected by chemiluminescence.