



UK Office

Everest Biotech Ltd

Cherwell Innovation Centre
77 Heyford Park
Upper Heyford
Oxfordshire
OX25 5HD
UK

Enquiries:

info@everestbiotech.com

Sales:

sales@everestbiotech.com

Tech support:

support@everestbiotech.com

Tel: +44 (0)1869 238326

Fax: +44 (0)1869 238327

US Office

Everest Biotech c/o Abcore

405 Maple Street, Suite A106
Ramona,
CA 92065
USA

Inquiries:

info@everestbiotech.com

Sales:

usasales@everestbiotech.com

Tech support:

support@everestbiotech.com

Tel: 888-320-4628 (toll-free)

Fax: 888-841-9041

www.everestbiotech.com

**Research Use Only. Not for
diagnostic or therapeutic use.**

EB10281 - Goat Anti-MIG12 Antibody

Size: 100µg specific antibody in 200µl



Target Protein

Principal Names: FLJ10386, G12-like, MID1 interacting G12-like protein, MID1 interacting protein 1 (gastrulation specific G12 homolog (zebrafish)), MID1 interacting protein 1 (gastrulation specific G12-like), MIG12, STRAIT11499, THRSPL, MID1IP1

Official Symbol: MID1IP1

Accession Number(s): NP_067065.1

Human GeneID(s): [58526](#)

Non-Human GeneID(s): 68041 (mouse), 404280 (rat)

Important Comments: Reported variants represent identical protein: NP_001092261.1, NP_067065.1, NP_001092260.1

Immunogen

Peptide with sequence C-HTVLSKLTRK, from the internal region of the protein sequence according to NP_067065.1.

Please note the [peptide](#) is available for sale.

Purification and Storage

Purified from goat serum by ammonium sulphate precipitation followed by antigen affinity chromatography using the immunizing peptide.

Supplied at 0.5 mg/ml in Tris saline, 0.02% sodium azide, pH7.3 with 0.5% bovine serum albumin.

Aliquot and store at -20°C. Minimize freezing and thawing.

Applications Tested

Peptide ELISA: antibody detection limit dilution 1:8000.

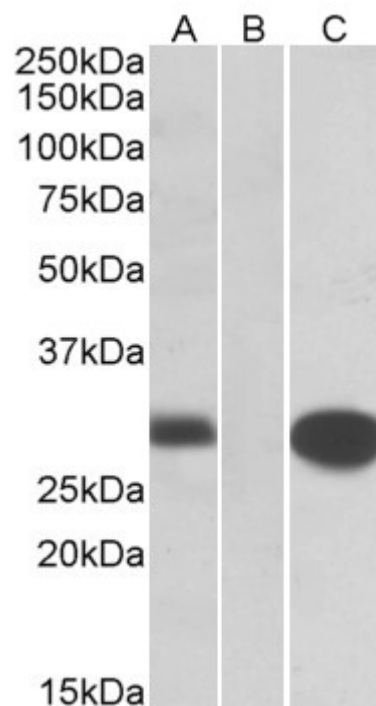
Western blot: In transfected HEK293 transiently expressing full-length Human MID1IP1 (myc and DYKDDDDK tagged), a band of approx. 28kDa was observed. No bands were observed in mock-transfected HEK293 and the same band was observed using anti-myc tag antibody. Recommended concentration, 0.2-1µg/ml.

Purchase the +ve control! The transfected lysate used to QC this product is available for sale. Please email sales@everestbiotech.com to request datasheet, pricing and delivery information.

Species Reactivity

Tested: Human

Expected from sequence similarity: Human, Mouse, Rat, Dog, Cow



HEK293 lysate (10ug protein in RIPA buffer) overexpressing Human MID1IP1 with C-terminal MYC tag probed with EB10281 (1ug/ml) in Lane A and probed with anti-MYC Tag (1/1000) in lane C. Mock-transfected HEK293 probed with EB10281 (1mg/ml) in Lane B. Primary incubations were for 1 hour. Detected by chemiluminescence.