



Everest Biotech Ltd  
Cherwell Innovation Centre  
77 Heyford Park  
Upper Heyford  
Oxfordshire  
OX25 5HD, United Kingdom

[everestbiotech.com](http://everestbiotech.com)

[sales@everestbiotech.com](mailto:sales@everestbiotech.com)

[support@everestbiotech.com](mailto:support@everestbiotech.com)

Tel +44 1869 238326

Fax +44 1869 238327

**Research Use Only. Not for diagnostic or therapeutic use.**

Storage: For long-term storage keep aliquots at -20°C. (Store no longer than 12 months at 4°C). Minimize freezing and thawing.

## EB05823 - Goat Anti-MID2 / TRIM1 Antibody

Size: 100µg specific antibody in 200µl



### Target Protein

**Principal Names:** RNF60, FXY2, FLJ41813, FLJ37715, RP6-191P20.2, tripartite motif protein 1, midin 2, FXY2, midline 2, TRIM1, MID2

**Official Symbol:** MID2

**Accession Number(s):** NP\_036348.2; NP\_438112.2

**Human GeneID(s):** [11043](#)

**Non-Human GeneID(s):** 23947 (mouse)

**Important Comments:** This antibody is expected to recognise both human isoforms of this protein.

### Immunogen

Peptide with sequence QESPYVSGMKTCH, from the C Terminus of the protein sequence according to NP\_036348.2; NP\_438112.2.

Please note the [peptide](#) is available for sale.

### Purification and Storage

Purified from goat serum by ammonium sulphate precipitation followed by antigen affinity chromatography using the immunizing peptide.

Supplied at 0.5 mg/ml in Tris saline, 0.02% sodium azide, pH7.3 with 0.5% bovine serum albumin.

Aliquot and store at -20°C. Minimize freezing and thawing.

### Applications Tested

**Peptide ELISA:** antibody detection limit dilution 1:32000.

**Western blot:** Approx 80kDa band observed in mouse heart lysates (calculated MW of 81.3kDa according to NP\_036348.1 and 77.9kDa according to NP\_438112.1).

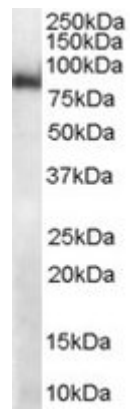
Recommended concentration: 1-3µg/ml.

**IHC:** In paraffin embedded Human Kidney shows strong staining in cytoplasm and brush border of some epithelial cells of proximal convoluted tubules. Recommended concentration, 5-10µg/ml.

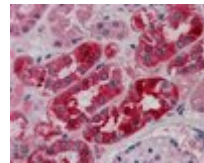
### Species Reactivity

**Tested:** Mouse, Human

**Expected from sequence similarity:** Human, Mouse, Rat, Dog, Pig, Cow



EB05823 (1 $\mu$ g/ml) staining of mouse heart lysate (RIPA buffer, 35 $\mu$ g total protein per lane). Primary incubated for 1 hour. Detected by western blot using chemiluminescence.



EB05823 (5 $\mu$ g/ml) staining of paraffin embedded Human Kidney. Steamed antigen retrieval with citrate buffer pH 6, AP-staining.