



## UK Office

### Everest Biotech Ltd

Cherwell Innovation Centre  
77 Heyford Park  
Upper Heyford  
Oxfordshire  
OX25 5HD  
UK

Enquiries:

[info@everestbiotech.com](mailto:info@everestbiotech.com)

Sales:

[sales@everestbiotech.com](mailto:sales@everestbiotech.com)

Tech support:

[support@everestbiotech.com](mailto:support@everestbiotech.com)

Tel: +44 (0)1869 238326

Fax: +44 (0)1869 238327

## US Office

### Everest Biotech c/o Abcore

405 Maple Street, Suite A106  
Ramona,  
CA 92065  
USA

Inquiries:

[info@everestbiotech.com](mailto:info@everestbiotech.com)

Sales:

[usasales@everestbiotech.com](mailto:usasales@everestbiotech.com)

Tech support:

[support@everestbiotech.com](mailto:support@everestbiotech.com)

Tel: 888-320-4628 (toll-free)

Fax: 888-841-9041

[www.everestbiotech.com](http://www.everestbiotech.com)

**Research Use Only. Not for  
diagnostic or therapeutic use.**

## EB11532 - Goat Anti-Mindbomb 1 / MIB1 Antibody

Size: 100µg specific antibody in 200µl



### Target Protein

**Principal Names:** DAPK-interacting protein 1, DIP-1, DKFZp686I0769, DKFZp761M1710, E3 ubiquitin-protein ligase MIB1, FLJ90676, MGC129659, MGC129660, MIB, MIB1, mind bomb homolog 1, mindbomb homolog 1 (Drosophila), OTTHUMP00000162549, ubiquitin ligase mind bomb, ubiquitin ligase protein MIB1, zinc finger ZZ type with ankyrin repeat domain protein 2, ZZANK2, ZZZ6

**Official Symbol:** MIB1

**Accession Number(s):** NP\_065825.1

**Human GeneID(s):** [57534](#)

**Non-Human GeneID(s):** 225164 (mouse), 307594 (rat)

### Immunogen

Peptide with sequence C-DKDNTNVNADVQKLQ, from the internal region (near C Terminus) of the protein sequence according to NP\_065825.1.

Please note the [peptide](#) is available for sale.

### Purification and Storage

Purified from goat serum by ammonium sulphate precipitation followed by antigen affinity chromatography using the immunizing peptide.

Supplied at 0.5 mg/ml in Tris saline, 0.02% sodium azide, pH7.3 with 0.5% bovine serum albumin.

Aliquot and store at -20°C. Minimize freezing and thawing.

### Applications Tested

**Peptide ELISA:** antibody detection limit dilution 1:16000.

**Western blot:** In transfected HEK293 transiently expressing Human MIB1 (myc and DYKDDDDK tagged), a band of approx. 135kDa is observed. No bands are observed in mock-transfected HEK293 and the same band is observed using anti-myc antibody. Recommended concentration, 0.5-1µg/ml.

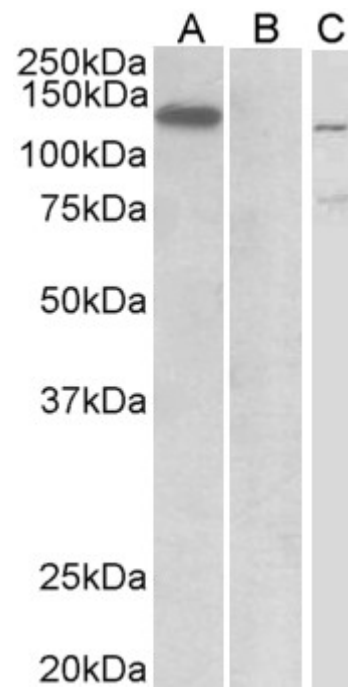
**IHC:** In paraffin embedded Human Cerebral Cortex shows staining of cytoplasm in the neuronal bodies, on one side of the nucleus. Recommended concentration, 2-4µg/ml.

Purchase the +ve control! The transfected lysate used in QC is available for sale. Please email [sales@everestbiotech.com](mailto:sales@everestbiotech.com) to request datasheet, pricing and delivery information.

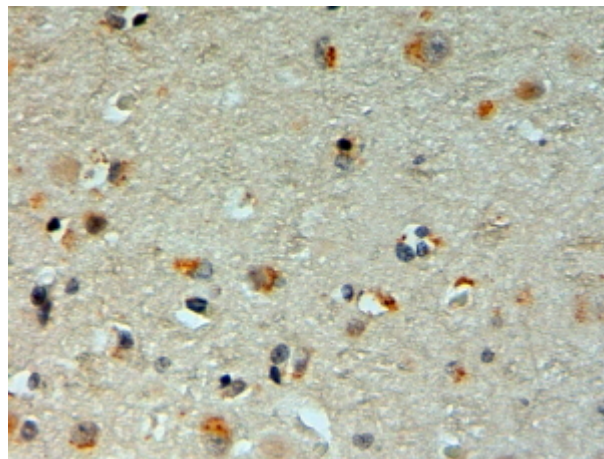
### Species Reactivity

**Tested:** Human

**Expected from sequence similarity:** Human, Mouse, Rat, Dog, Cow



HEK293 lysate (10ug protein in RIPA buffer) overexpressing Human MIB1 with C-terminal MYC tag probed with EB11532 (1ug/ml) in Lane A and probed with anti-MYC Tag (1/1000) in lane C. Mock-transfected HEK293 probed with EB11532 (1mg/ml) in Lane B. Primary incubations were for 1 hour. Detected by chemiluminescence.



EB11532 (2μg/ml) staining of paraffin embedded Human Cerebral Cortex. Steamed antigen retrieval with citrate buffer pH 6, HRP-staining.