



UK Office

Everest Biotech Ltd

Cherwell Innovation Centre
77 Heyford Park
Upper Heyford
Oxfordshire
OX25 5HD
UK

Enquiries:

info@everestbiotech.com

Sales:

sales@everestbiotech.com

Tech support:

support@everestbiotech.com

Tel: +44 (0)1869 238326

www.everestbiotech.com

**Research Use Only. Not for
diagnostic or therapeutic use.**

EB11998 - Goat Anti-MLC1 (aa179-193) Antibody

Size: 100µg specific antibody in 200µl



Target Protein

Principal Names: MLC1, megalencephalic leukoencephalopathy with subcortical cysts 1, LVM, MLC, VL, membrane protein MLC1

Official Symbol: MLC1

Accession Number(s): NP_055981.1

Human GeneID(s): [23209](#)

Important Comments: Reported variants represent identical protein: NP_631941.1, NP_055981.1.

Immunogen

Peptide with sequence C-SDSANILDEVFPFAR, from the internal region of the protein sequence according to NP_055981.1.

Please note the [peptide](#) is available for sale.

Purification and Storage

Purified from goat serum by ammonium sulphate precipitation followed by antigen affinity chromatography using the immunizing peptide.

Supplied at 0.5 mg/ml in Tris saline, 0.02% sodium azide, pH7.3 with 0.5% bovine serum albumin.

Aliquot and store at -20°C. Minimize freezing and thawing.

Applications Tested

Peptide ELISA: antibody detection limit dilution 1:128000.

Western blot: Approx 70kDa band observed in Human Brain (Hippocampus) lysates (calculated MW of 41.1kDa according to NP_055981.1). The observed molecular weight corresponds to earlier findings in literature with different antibodies (López-Hernández et al, Hum Mol Genet. 2011 Aug 15;20(16):3266-77.PMID:21624973). Recommended concentration: 1-3µg/ml. Primary incubation was 1 hour.

IHC: Paraffin embedded Human Brain (Cortex). Recommended concentration: 5µg/ml.

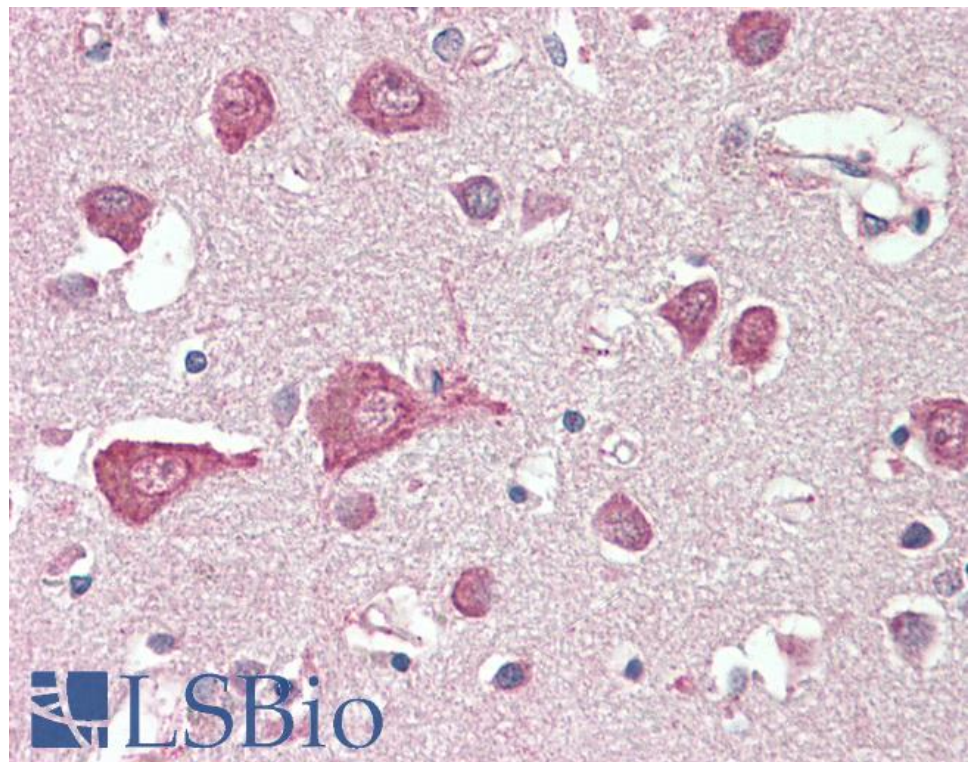
Species Reactivity

Tested: Human

Expected from sequence similarity: Human



EB11998 (1µg/ml) staining of Human Hippocampus lysate (35µg protein in RIPA buffer). Detected by chemiluminescence.



EB11998 (5µg/ml) staining of paraffin embedded Human Cortex. Steamed antigen retrieval with citrate buffer pH 6, AP-staining.