



UK Office

Everest Biotech Ltd

Cherwell Innovation Centre
77 Heyford Park
Upper Heyford
Oxfordshire
OX25 5HD
UK

Enquiries:

info@everestbiotech.com

Sales:

sales@everestbiotech.com

Tech support:

support@everestbiotech.com

Tel: +44 (0)1869 238326

Fax: +44 (0)1869 238327

US Office

Everest Biotech c/o Abcore

405 Maple Street, Suite A106
Ramona,
CA 92065
USA

Inquiries:

info@everestbiotech.com

Sales:

usasales@everestbiotech.com

Tech support:

support@everestbiotech.com

Tel: 888-320-4628 (toll-free)

Fax: 888-841-9041

www.everestbiotech.com

**Research Use Only. Not for
diagnostic or therapeutic use.**

EB05729 - Goat Anti-KMT2B/MLL4 Antibody

Size: 100µg specific antibody in 200µl



Target Protein

Principal Names: KMT2B, MLL4, HRX2, MLL2, WBP7, DYT28, MLL1B, myeloid/lymphoid or mixed-lineage leukemia 4, CXXC10, histone-lysine N-methyltransferase 2B, KIAA0304, Lysine N-methyltransferase 2B, mixed lineage leukemia 4, WBP-7, WBP-7

Official Symbol: KMT2B

Accession Number(s): NP_055542.1

Human GeneID(s): [9757](#)

Non-Human GeneID(s): 75410 (mouse)

Immunogen

Peptide with sequence CNCGAKRCRRFLN, from the C Terminus of the protein sequence according to NP_055542.1.

Please note the [peptide](#) is available for sale.

Purification and Storage

Purified from goat serum by ammonium sulphate precipitation followed by antigen affinity chromatography using the immunizing peptide.

Supplied at 0.5 mg/ml in Tris saline, 0.02% sodium azide, pH7.3 with 0.5% bovine serum albumin.

Aliquot and store at -20°C. Minimize freezing and thawing.

Applications Tested

Peptide ELISA: antibody detection limit dilution 1:128000.

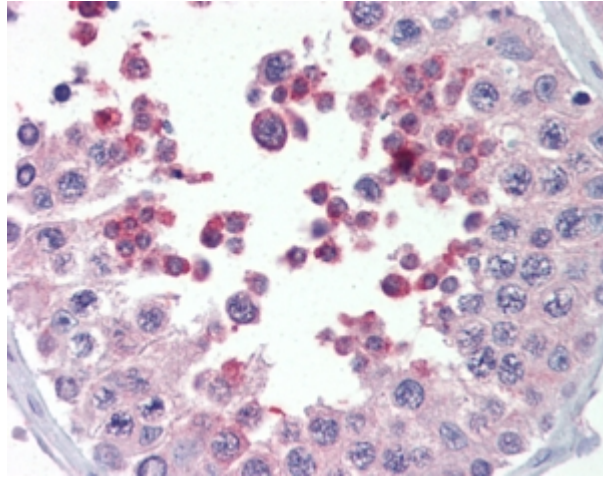
Western blot: Using our routine western blotting protocol we would not expect to reliably detect proteins larger than 250kDa (calculated MWt. of approx. 294KDa according to NP_055542.1).

IHC: Positive staining seen in paraffin embedded Human Testis and Human Brain Cortex. Recommended concentration: 5-10µg/ml.

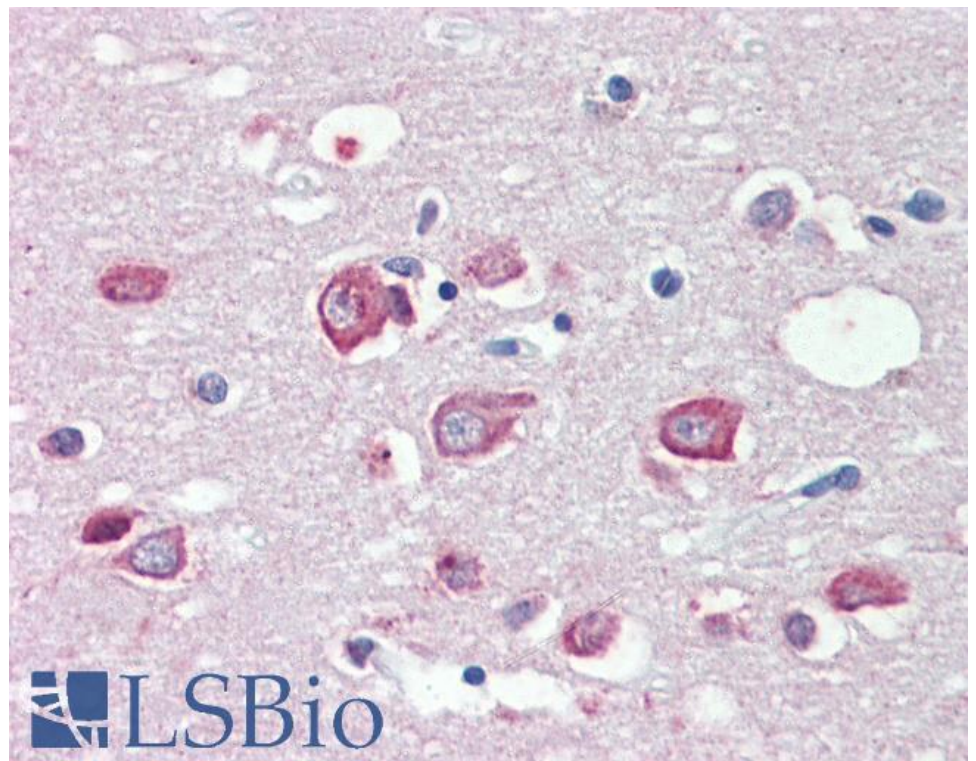
Species Reactivity

Tested: Human

Expected from sequence similarity: Human, Mouse, Rat, Dog, Pig



EB05729 (5µg/ml) staining of paraffin embedded Human Testis. Steamed antigen retrieval with citrate buffer pH 6, AP-staining.



EB05729 (5µg/ml) staining of paraffin embedded Human Cortex. Steamed antigen retrieval with citrate buffer pH 6, AP-staining.